



## **2018 PACIFIC NORTHWEST CROP QUALITY REPORT**

WEEK 7 **FINAL**: September 13, 2018

This is the final weekly report for the 2018 Pacific Northwest wheat harvest survey. We have received and tested 833 samples. Sincere gratitude is extended to all who are involved with this year's sample collection, the Federal Grain Inspection Service Portland Field Office for grading, and the PNW wheat growers and PNW state and private grain inspection organizations for their generous cooperation in the sample collection. Special thanks go to Idaho Wheat Commission, Oregon Wheat Commission, and Washington Grain Commission for funding this project.

Of the 833 samples received this year, 473 were soft white (SWH), 128 were white club (WHCB), 112 were hard red winter (HRW), 95 were hard red spring (HRS), 24 were hard white (HDWH), and one was western white wheat (WWH).

Soft white wheat crop weighted averages had the following differences when compared to the 2017. Test weight was higher at 61.7 lb/bu (80.9 kg/hl). Wheat moisture content decreased to 8.6% from 8.9% last year. Wheat protein (12% mb) decreased to 9.3% from 9.6% last year. Falling number value (14% mb) was 315 seconds. Thousand kernel weight (14% mb) and kernel size increased slightly from last year. Kernel hardness was lower and wheat ash content was higher than last year.

White club wheat crop weighted averages had the following differences from the 2017. Test weight increased to 61.2 lb/bu (80.5 kg/hl) from 60.2 lb/bu (79.2 kg/hl) last year. Wheat moisture decreased to 8.1% from 8.3% last year. Wheat protein (12% mb) decreased to 9.0% from 9.4% last year. Falling number value (14% mb) was 316 seconds. Whole meal wet gluten (14% mb) was decreased to 15.8% from 17.1% last year.

Hard red winter wheat crop weighted averages had the following highlights when compared to 2017. Test weight increased to 62.9 lb/bu from 62.4 lb/bu last year. Wheat moisture decreased to 8.3% from 8.4% last year. Wheat protein (12% mb) decreased to 11.1% from 11.5% last year, falling number value (14% mb) decreased to 365 seconds from 387 seconds last year, whole meal wet gluten increased slightly to 25.1% from 24.8% last year, and thousand kernel weight (14% mb) and kernel size were higher than last year.

Hard red spring wheat crop weighted averages follow similar trend with HRW with increased test weight, decreased moisture, and decreased wheat protein, .

Thank you all for your support. We have started to make SWH and WHCB composites to perform various flour and finished product tests for US Wheat Associates' 2018 Crop Quality Report as well as 2018 U.S. Pacific Northwest Soft White Wheat Quality Report.



**BY USDA ECONOMIC STATISTICS DISTRICTS**

**Table 1**

2018 CROP WEEK 7 Final, September 13, 2018

		Grading Data										Quality Data									
Class	District	Number of Samples	Test Weight (lb/bu)	Test Weight (kg/hl)	Dockage (%)	Heat Damage (%)	Total Damage (%)	Foreign Material (%)	Shrunk & Broken (%)	Total Defects (%)	Moisture (%)	Protein (% 12% mb)			Falling Number (s, 14%mb)	Thousand Kernel Weight (g, 14% mb)	Kernel Hardness (-20 to 120)	Kernel Size (mm)	Ash (% 14% mb)	Wet Gluten (% 14% mb)	
												Average	Low	High							
SWH	112	11	62.3	82.0	0.4	0.0	0.0	0.0	0.3	0.3	10.7	8.6	7.4	10.4	325	40.6	21.8	2.87	1.42	18.8	
SWH	3	3	61.1	80.4	0.4	0.0	0.0	0.0	0.4	0.4	8.4	9.5	9.3	9.7	311	43.6	23.9	2.95	1.43	21.7	
SWH	4	52	60.4	79.5	0.7	0.0	0.0	0.1	0.6	0.6	8.6	9.4	7.0	14.4	327	33.2	25.3	2.73	1.38	22.1	
SWH	5	35	61.6	78.6	0.3	0.0	0.1	0.2	0.6	0.8	8.2	9.6	7.2	12.6	320	36.5	25.9	2.80	1.38	22.0	
SWH	617	21	61.0	80.2	0.5	0.0	0.0	0.1	0.8	0.9	8.2	9.1	7.2	11.7	300	34.2	24.6	2.71	1.24	21.2	
SWH	8	112	61.5	80.9	0.4	0.0	0.0	0.0	0.6	0.6	8.3	9.2	6.4	12.5	299	34.0	27.6	2.69	1.27	21.5	
SWH	9	27	61.5	80.8	1.3	0.0	0.0	0.0	0.6	0.7	9.0	8.9	7.5	10.8	324	35.9	26.6	2.78	1.38	18.4	
SWH	10	116	62.6	81.6	0.3	0.0	0.0	0.0	0.4	0.4	8.6	9.2	7.1	12.5	308	37.1	27.5	2.82	1.35	19.9	
SWH	11	42	62.8	82.5	0.3	0.0	0.0	0.0	0.5	0.6	8.5	9.0	8.0	10.8	332	36.0	30.0	2.81	1.44	19.0	
SWH	12	4	61.1	80.3	0.3	0.0	0.1	0.0	0.3	0.4	8.8	9.2	8.3	9.6	276	46.0	21.2	2.97	1.47	21.1	
SWH	13	12	61.1	80.3	0.4	0.0	0.0	0.0	0.4	0.4	9.4	10.0	8.3	12.8	340	38.9	29.3	2.79	1.49	22.7	
SWH	14	38	61.4	80.7	0.5	0.0	0.1	0.1	0.7	0.9	9.3	10.0	6.9	12.7	341	35.9	29.0	2.76	1.57	19.8	
	<b>Crop Year Average</b>																				
SWH	<b>2018</b>	473	61.7	80.9	0.5	0.0	0.0	0.0	0.5	0.6	8.6	9.3			315	35.7	27.2	2.77	1.36	20.6	
SWH	<b>2017</b>	512	60.9	80.0	0.5	0.0	0.0	0.1	0.5	0.6	8.9	9.6			335	35.5	30.1	2.75	1.32	20.2	
WHCB	4	3	60.4	79.5	0.7	0.0	0.0	0.1	0.8	0.9	8.9	9.3	7.0	10.7	348	29.7	29.9	2.61	1.39	18.8	
WHCB	5	3	60.7	79.8	0.4	0.0	0.2	0.1	1.2	1.4	8.1	8.6	7.9	9.4	292	30.7	29.9	2.58	1.24	13.2	
WHCB	617	4	59.4	78.1	0.4	0.0	0.0	0.1	1.2	1.2	7.6	10.1	6.2	13.6	265	30.2	24.3	2.54	1.43	19.5	
WHCB	8	86	61.0	80.2	0.5	0.0	0.0	0.1	0.8	0.9	7.8	9.0	6.4	11.8	311	33.8	25.7	2.62	1.25	16.4	
WHCB	9	1	65.1	85.5	0.9	0.0	0.0	0.1	0.4	0.5	8.9	9.2	9.2	9.2	379	32.4	48.2	2.76	1.33	18.1	
WHCB	10	15	62.2	81.8	0.5	0.0	0.0	0.0	0.7	0.7	8.7	9.4	7.8	10.7	333	31.1	32.1	2.62	1.31	16.0	
WHCB	11	16	61.9	81.4	0.5	0.0	0.0	0.0	0.7	0.8	8.7	8.5	7.5	9.9	335	30.5	34.2	2.64	1.39	11.4	
	<b>Crop Year Average</b>																				
WHCB	<b>2018</b>	128	61.2	80.5	0.5	0.0	0.0	0.1	0.8	0.9	8.1	9.0			316	32.8	27.9	2.62	1.29	15.8	
WHCB	<b>2017</b>	96	60.2	79.2	0.5	0.0	0.0	0.0	1.0	1.1	8.3	9.4			348	32.5	30.6	2.56	1.27	17.1	
HRW	4	4	59.7	78.6	1.6	0.0	0.0	0.1	0.6	0.7	7.6	13.5	12.6	14.9	439	25.8	73.2	2.57	1.46	32.0	
HRW	5	3	62.3	82.0	0.5	0.0	0.0	0.1	0.5	0.5	8.3	12.1	11.8	12.5	389	34.4	65.2	2.86	1.38	25.5	
HRW	617	11	63.2	83.1	0.4	0.0	0.0	0.0	0.5	0.5	8.8	11.6	9.3	15.0	355	36.8	67.4	2.91	1.44	25.9	
HRW	8	28	63.0	82.8	0.3	0.0	0.0	0.0	0.5	0.5	8.2	11.7	9.4	13.8	356	36.5	65.7	2.91	1.43	29.6	
HRW	9	3	63.3	83.2	0.1	0.0	0.0	0.0	0.2	0.2	8.2	12.8	10.6	14.2	366	40.4	63.0	3.02	1.31	33.4	
HRW	10	24	63.6	83.5	0.2	0.0	0.0	0.0	0.4	0.4	8.3	10.0	8.5	11.9	349	38.4	63.2	2.95	1.29	20.3	
HRW	11	21	63.6	83.6	0.4	0.0	0.0	0.0	0.5	0.6	8.3	10.0	9.1	12.4	357	38.4	63.2	2.99	1.31	20.9	
HRW	12	4	63.5	83.4	0.3	0.0	0.0	0.0	0.4	0.4	7.5	11.3	10.3	11.9	404	39.3	59.0	2.92	1.40	29.2	
HRW	13	5	60.8	80.0	0.1	0.0	0.0	0.0	0.6	0.6	7.2	12.2	11.7	13.7	397	31.0	73.4	2.86	1.53	25.7	
HRW	14	9	61.3	80.6	0.4	0.0	0.0	0.1	1.2	1.3	8.6	11.1	9.0	14.4	390	34.7	67.1	2.88	1.46	24.0	
	<b>Crop Year Average</b>																				
HRW	<b>2018</b>	112	62.9	82.7	0.3	0.0	0.0	0.0	0.5	0.5	8.3	11.1			365	36.7	65.3	2.92	1.38	25.1	
HRW	<b>2017</b>	93	62.4	82.0	0.4	0.0	0.0	0.0	0.5	0.5	8.4	11.5			387	35.3	69.7	2.82	1.34	24.8	
HRS	4	4	60.6	79.7	0.6	0.0	0.0	0.1	0.8	0.8	8.3	15.0	13.9	16.3	373	31.6	69.4	2.76	1.53	36.8	
HRS	5	5	60.9	80.1	0.4	0.0	0.0	0.1	2.5	2.5	8.1	14.3	11.7	16.2	425	29.8	72.2	2.68	1.56	35.5	
HRS	617	6	64.4	84.6	0.3	0.0	0.0	0.0	0.9	0.9	8.6	14.1	11.9	15.2	348	36.5	67.0	2.91	1.51	38.5	
HRS	8	24	63.0	82.8	0.3	0.0	0.1	0.0	0.5	0.5	8.3	14.3	10.5	16.2	382	34.9	69.3	2.87	1.53	36.7	
HRS	9	2	62.6	82.3	0.25	0.0	0.0	0.0	1.4	1.4	9.1	11.1	10.7	11.5	343	31.2	71.0	2.73	1.62	22.5	
HRS	10	15	63.5	83.5	0.3	0.0	0.0	0.0	0.4	0.4	8.1	13.9	11.0	15.6	404	32.4	74.1	2.78	1.49	33.5	
HRS	11	18	61.8	81.2	0.5	0.0	0.0	0.0	1.2	1.2	9.0	13.8	11.9	16.4	397	27.9	76.6	2.61	1.57	32.9	
HRS	12	2	63.6	83.5	0.4	0.0	0.0	0.1	0.4	0.5	8.0	15.1	14.7	15.4	437	40.4	61.7	3.06	1.66	43.3	
HRS	13	2	61.4	80.7	0.2	0.0	0.1	0.0	0.5	0.6	7.6	12.2	11.5	12.8	371	33.4	71.7	2.81	1.58	30.7	
HRS	14	17	62.3	81.9	0.5	0.0	0.0	0.0	0.5	0.6	9.9	14.5	13.3	15.8	369	31.6	74.0	2.73	1.64	35.4	
	<b>Crop Year Average</b>																				
HRS	<b>2018</b>	95	62.6	82.3	0.4	0.0	0.0	0.0	0.8	0.8	8.7	14.1			386	32.3	72.2	2.77	1.56	35.0	
HRS	<b>2017</b>	74	62.2	81.7	0.4	0.0	0.1	0.0	0.8	0.9	9.1	14.6			384	33.0	72.3	2.81	1.52	35.4	



**BY PRODUCTION ZONES**

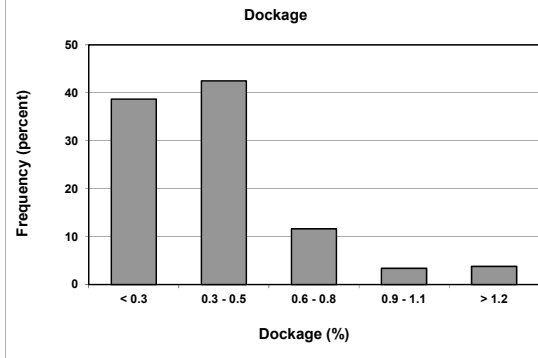
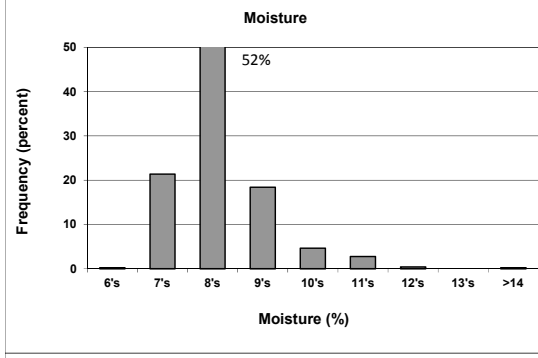
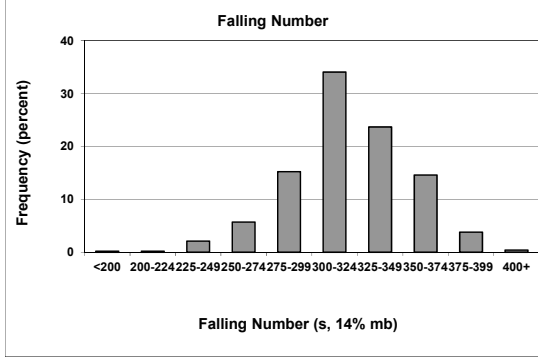
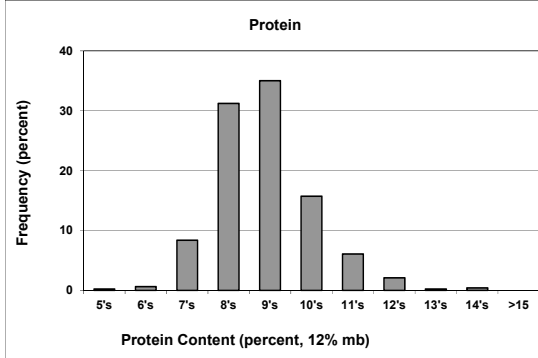
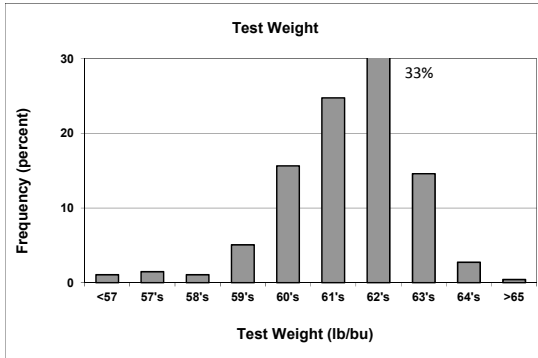
**Table 2**

2018 CROP WEEK 7 Final, September 13, 2018																				
Class	District	Number of Sample	Grading Data									Quality Data								
			Test Weight (lb/bu)	Test Weight (kg/hl)	Dockage (%)	Heat Damage (%)	Total Damage (%)	Foreign Material (%)	Shrunk & Broken (%)	Total Defects (%)	Moisture (%)	Protein (% 12% mb)			Falling Number (s, 14%mb)	Thousand Kernel Weight (g, 14% mb)	Kernel Hardness (-20 to 120)	Kernel Size (mm)	Ash (% 14% mb)	Wet Gluten (% 14% mb)
												Average	Low	High						
SWH	NC	149	61.6	81.0	0.4	0.0	0.0	0.0	0.6	0.6	8.2	9.2	6.4	12.5	304	34.3	27.2	2.71	1.27	21.1
SWH	NE	161	62.5	81.7	0.5	0.0	0.0	0.0	0.4	0.5	8.7	9.1	7.1	12.5	318	36.8	28.1	2.81	1.38	19.4
SWH	C	95	60.9	79.3	0.6	0.0	0.0	0.1	0.6	0.7	8.5	9.5	7.0	14.4	323	34.4	25.6	2.75	1.37	22.2
SWH	SW	11	62.3	82.0	0.4	0.0	0.0	0.0	0.3	0.3	10.7	8.6	7.4	10.4	325	40.6	21.8	2.87	1.42	18.8
SWH	SE	57	61.3	80.6	0.4	0.0	0.1	0.1	0.6	0.7	9.3	9.9	6.9	12.8	333	37.7	28.2	2.79	1.54	20.6
	<b>Crop Year Average</b>																			
SWH	<b>2018</b>	473	61.7	80.9	0.5	0.0	0.0	0.0	0.5	0.6	8.6	9.3			315	35.7	27.2	2.77	1.36	20.6
SWH	<b>2017</b>	512	60.9	80.0	0.5	0.0	0.0	0.1	0.5	0.6	8.9	9.6			335	35.5	30.1	2.75	1.32	20.2
WHCB	NC	91	60.9	80.2	0.5	0.0	0.0	0.1	0.8	0.9	7.8	9.1	6.4	13.6	311	33.5	26.1	2.61	1.26	16.6
WHCB	NE	30	62.2	81.7	0.5	0.0	0.0	0.0	0.7	0.7	8.8	8.9	7.5	10.4	334	31.1	33.3	2.64	1.36	13.7
WHCB	C	7	60.4	79.4	0.6	0.0	0.1	0.1	0.9	1.1	8.3	8.6	6.2	10.7	291	30.7	27.7	2.61	1.33	14.9
	<b>Crop Year Average</b>																			
WHCB	<b>2018</b>	128	61.2	80.5	0.5	0.0	0.0	0.1	0.8	0.9	8.1	9.0			316	32.8	27.9	2.62	1.29	15.8
WHCB	<b>2017</b>	96	60.2	79.2	0.5	0.0	0.0	0.0	1.0	1.1	8.3	9.4			348	32.5	30.6	2.56	1.27	17.1
HRW	NC	39	63.0	82.9	0.3	0.0	0.0	0.0	0.4	0.5	8.3	11.6	9.4	15.0	359	37.0	65.5	2.93	1.42	28.6
HRW	NE	45	63.6	83.6	0.3	0.0	0.0	0.0	0.4	0.5	8.3	10.1	8.5	14.2	354	38.7	63.2	2.97	1.31	21.3
HRW	C	10	61.4	80.8	0.8	0.0	0.0	0.1	0.5	0.6	8.4	12.3	9.3	14.9	374	30.1	70.2	2.68	1.40	27.1
HRW	SE	18	61.6	81.0	0.3	0.0	0.0	0.0	0.9	0.9	8.0	11.4	9.0	14.4	395	34.7	67.0	2.88	1.46	25.7
	<b>Crop Year Average</b>																			
HRW	<b>2018</b>	112	62.9	82.7	0.3	0.0	0.0	0.0	0.5	0.5	8.3	11.1			365	36.7	65.3	2.92	1.38	25.1
HRW	<b>2017</b>	93	62.4	82.0	0.4	0.0	0.0	0.0	0.5	0.5	8.4	11.5			387	35.3	69.7	2.82	1.34	24.8
HRS	NC	33	63.3	83.2	0.3	0.0	0.0	0.0	0.4	0.5	8.3	14.3	10.5	16.2	378	34.8	69.3	2.87	1.54	37.0
HRS	NE	31	62.5	82.2	0.4	0.0	0.0	0.0	0.9	0.9	8.7	13.6	10.7	16.4	393	30.0	75.6	2.68	1.53	32.1
HRS	C	10	60.9	80.1	0.5	0.0	0.0	0.1	2.0	2.0	8.2	14.6	11.7	16.3	403	30.6	70.6	2.72	1.53	36.0
HRS	SE	21	62.3	82.0	0.5	0.0	0.0	0.0	0.5	0.6	9.5	14.3	11.5	15.8	375	32.6	72.6	2.77	1.64	35.7
	<b>Crop Year Average</b>																			
HRS	<b>2018</b>	95	62.6	82.3	0.4	0.0	0.0	0.0	0.8	0.8	8.7	14.1			386	32.3	72.2	2.77	1.56	35.0
HRS	<b>2017</b>	74	62.2	81.7	0.4	0.0	0.1	0.0	0.8	0.9	9.1	14.6			384	33.0	72.3	2.81	1.52	35.4

# Distributions

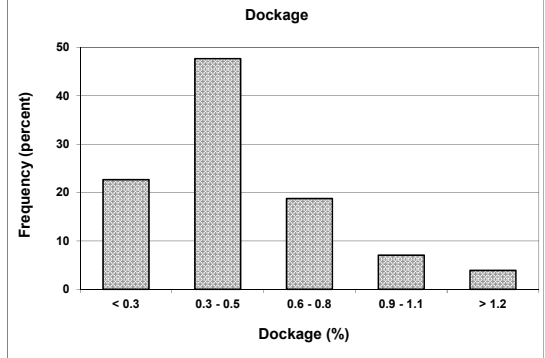
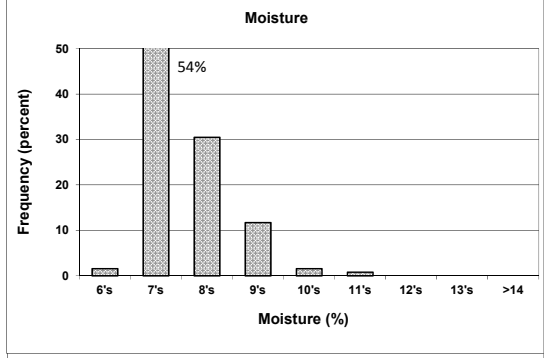
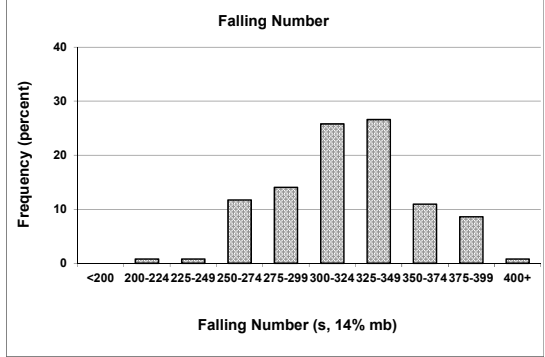
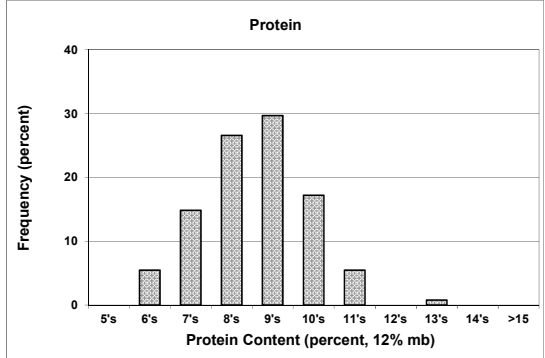
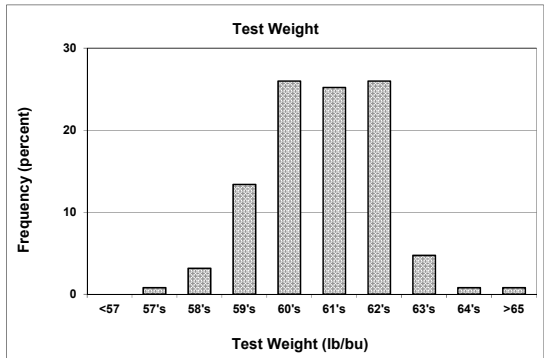
## SOFT WHITE WHEAT

473 SAMPLES



## WHITE CLUB WHEAT

128 SAMPLE



Prepared by: Wheat Marketing Center, Portland, Oregon