



## **2018 PACIFIC NORTHWEST CROP QUALITY REPORT**

WEEK 6: September 6, 2018

We received and tested 712 samples by the end of the sixth week for the Pacific Northwest 2018 wheat harvest.

Of the 114 wheat samples tested for this week, 52 were soft white (SWH), 20 were white club (WHCB), 21 were hard red winter (HRW), and 21 were hard red spring (HRS). Thirty-nine samples (34%) came from District 11 (Northern Idaho), 31 (27%) were from District 8 (East Central Washington), 17 (15%) were from District 9 (Northeastern Washington), 15 (13%) were from District 10 (Southeastern Washington), and six (5%) each were from Districts 4 (North Central Oregon) and 5 (Northeastern Oregon).

USDA Economic Statistics Districts (Table 1) data remained similar to last week as follows: Test weights for SWH ranged from 60.4 to 62.8 lb/bu with weighted average at 61.7 lb/bu (81.2 kg/hl). SWH dockage ranged from 0.3 to 1.3%. Wheat moisture contents ranged from 8.1 to 10.7% with weighted average at 8.5%. Average SWH wheat protein content (12% mb) was 9.3% and the range is from 8.6 to 10.2%. SWH falling number average value (14% mb) was 315 seconds. WHCB, HRW, and HRS data stayed similar to last week.

We continue to report the six PNW Production Zones (Table 2): Northwest (NW), Southwest (SW), North Central (NC), Central (C), Northeast (NE), and Southeast (SE). The Zones are based on country elevator locations and climatic conditions. This week samples came from Zone NE (62%), Zone NC (27%), and Zone C (11%).

The SWH average protein (12% mb) was the highest for Zone SE at 10.0% followed by Zones C at 9.5%; the lowest was in Zone SW at 8.6%. The WHCB average protein (12% mb) was the highest at 9.1% for Zone NC and lower at 8.9% and 8.4% for Zones NE and C, respectively.



**BY USDA ECONOMIC STATISTICS DISTRICTS**

**Table 1**

2018 CROP WEEK 6, September 6, 2018

		Grading Data										Quality Data									
Class	District	Number of Samples	Test Weight (lb/bu)	Test Weight (g/mhl)	Dockage (%)	Heat Damage (%)	Total Damage (%)	Foreign Material (%)	Shrunk & Broken (%)	Total Defects (%)	Moisture (%)	Protein (% 12% mb)			Falling Number (s, 14%mb)	Thousand Kernel Weight (g, 14% mb)	Kernel Hardness (-20 to 120)	Kernel Size (mm)	Ash (% 14% mb)	Wet Gluten (% 14% mb)	
												Average	Low	High							
SWH	112	11	62.3	82.0	0.4	0.0	0.0	0.0	0.3	0.3	10.7	8.6	7.4	10.4	325	40.6	21.8	2.87	1.42	18.8	
SWH	3	3	61.1	80.4	0.4	0.0	0.0	0.0	0.4	0.4	8.4	9.5	9.3	9.7	311	43.6	23.9	2.95	1.43	21.7	
SWH	4	52	60.4	79.5	0.7	0.0	0.0	0.1	0.6	0.6	8.6	9.4	7.0	14.4	327	33.2	25.3	2.73	1.38	22.1	
SWH	5	30	61.6	81.0	0.3	0.0	0.0	0.2	0.6	0.8	8.1	9.6	7.5	12.6	326	36.4	26.7	2.80	1.37	21.7	
SWH	617	21	61.0	80.2	0.5	0.0	0.0	0.1	0.8	0.9	8.2	9.1	7.2	11.7	300	34.2	24.6	2.71	1.24	21.2	
SWH	8	112	61.5	80.9	0.4	0.0	0.0	0.0	0.6	0.6	8.3	9.2	6.4	12.5	299	34.0	27.6	2.69	1.27	21.5	
SWH	9	27	61.5	80.8	1.3	0.0	0.0	0.0	0.6	0.7	9.0	8.9	7.5	10.8	324	35.9	26.6	2.78	1.38	18.4	
SWH	10	86	62.7	82.5	0.3	0.0	0.0	0.0	0.3	0.4	8.4	9.1	7.1	11.3	302	37.1	28.5	2.83	1.34	19.8	
SWH	11	33	62.8	82.5	0.3	0.0	0.0	0.0	0.5	0.6	8.3	9.2	8.0	10.8	332	35.8	31.1	2.81	1.44	20.6	
SWH	12	4	61.1	80.3	0.3	0.0	0.1	0.0	0.3	0.4	8.8	9.2	8.3	9.6	276	46.0	21.2	2.97	1.47	21.1	
SWH	13	12	61.1	80.3	0.4	0.0	0.0	0.0	0.4	0.4	9.4	10.0	8.3	12.8	340	38.9	29.3	2.79	1.49	22.7	
SWH	14	28	61.8	81.3	0.4	0.0	0.1	0.0	0.4	0.6	9.2	10.2	7.0	11.4	352	36.9	31.5	2.80	1.57	20.8	
	<b>Crop Year Average</b>																				
SWH	<b>2018</b>	419	61.7	81.2	0.5	0.0	0.0	0.0	0.5	0.6	8.5	9.3			315	35.7	27.6	2.77	1.36	20.9	
SWH	<b>2017</b>	512	60.9	80.0	0.5	0.0	0.0	0.1	0.5	0.6	8.9	9.6			335	35.5	30.1	2.75	1.32	20.2	
WHCB	4	3	60.4	79.5	0.7	0.0	0.0	0.1	0.8	0.9	8.9	9.3	7.0	10.7	348	29.7	29.9	2.61	1.39	18.8	
WHCB	5	2	60.4	79.5	0.5	0.0	0.3	0.1	1.2	1.5	7.6	8.3	7.9	8.6	269	29.5	30.7	2.53	1.15	16.7	
WHCB	617	4	59.4	78.1	0.4	0.0	0.0	0.1	1.2	1.2	7.6	10.1	6.2	13.6	265	30.2	24.3	2.54	1.43	19.5	
WHCB	8	86	61.0	80.2	0.5	0.0	0.0	0.1	0.8	0.9	7.8	9.0	6.4	11.8	311	33.8	25.7	2.62	1.25	16.4	
WHCB	9	1	65.1	85.5	0.9	0.0	0.0	0.1	0.4	0.5	8.9	9.2	9.2	9.2	379	32.4	48.2	2.76	1.33	18.1	
WHCB	10	10	62.1	81.6	0.5	0.0	0.0	0.0	0.8	0.9	8.3	9.4	7.8	10.7	341	30.2	33.1	2.60	1.30	18.0	
WHCB	11	11	61.7	81.1	0.5	0.0	0.0	0.0	0.8	0.9	8.5	8.5	7.5	9.4	332	30.2	34.4	2.62	1.38	12.0	
	<b>Crop Year Average</b>																				
WHCB	<b>2018</b>	117	61.1	80.3	0.5	0.0	0.0	0.1	0.8	0.9	8.0	9.0			315	32.9	27.5	2.61	1.28	16.3	
WHCB	<b>2017</b>	96	60.2	79.2	0.5	0.0	0.0	0.0	1.0	1.1	8.3	9.4			348	32.5	30.6	2.56	1.27	17.1	
HRW	4	4	59.7	78.6	1.6	0.0	0.0	0.1	0.6	0.7	7.6	13.5	12.6	14.9	439	25.8	73.2	2.57	1.46	32.0	
HRW	5	3	62.3	82.0	0.5	0.0	0.0	0.1	0.5	0.5	8.3	12.1	11.8	12.5	389	34.4	65.2	2.86	1.38	25.5	
HRW	617	11	63.2	83.1	0.4	0.0	0.0	0.0	0.5	0.5	8.8	11.6	9.3	15.0	355	36.8	67.4	2.91	1.44	25.9	
HRW	8	28	63.0	82.8	0.3	0.0	0.0	0.0	0.5	0.5	8.2	11.7	9.4	13.8	356	36.5	65.7	2.91	1.43	29.6	
HRW	9	3	63.3	83.2	0.1	0.0	0.0	0.0	0.2	0.2	8.2	12.8	10.6	14.2	366	40.4	63.0	3.02	1.31	33.4	
HRW	10	17	63.9	84.0	0.2	0.0	0.0	0.0	0.3	0.3	8.3	10.0	8.7	11.5	342	38.4	64.1	2.96	1.26	20.9	
HRW	11	19	63.7	83.7	0.4	0.0	0.0	0.0	0.5	0.5	8.2	9.9	9.1	12.4	356	38.5	63.6	2.99	1.31	21.0	
HRW	12	4	63.5	83.4	0.3	0.0	0.0	0.0	0.4	0.4	7.5	11.3	10.3	11.9	404	39.3	59.0	2.92	1.40	29.2	
HRW	13	5	60.8	80.0	0.1	0.0	0.0	0.0	0.6	0.6	7.2	12.2	11.7	13.7	397	31.0	73.4	2.86	1.53	25.7	
	<b>Crop Year Average</b>																				
HRW	<b>2018</b>	94	63.1	82.9	0.3	0.0	0.0	0.0	0.4	0.5	8.2	11.1			362	36.7	65.5	2.92	1.38	25.7	
HRW	<b>2017</b>	93	62.4	82.0	0.4	0.0	0.0	0.0	0.5	0.5	8.4	11.5			387	35.3	69.7	2.82	1.34	24.8	
HRS	4	4	60.6	79.7	0.6	0.0	0.0	0.1	0.8	0.8	8.3	15.0	13.9	16.3	373	31.6	69.4	2.76	1.53	36.8	
HRS	5	5	60.9	80.1	0.4	0.0	0.0	0.1	2.5	2.5	8.1	14.3	11.7	16.2	425	29.8	72.2	2.68	1.56	35.5	
HRS	617	6	64.4	84.6	0.3	0.0	0.0	0.0	0.9	0.9	8.6	14.1	11.9	15.2	348	36.5	67.0	2.91	1.51	38.5	
HRS	8	24	63.0	82.8	0.3	0.0	0.1	0.0	0.5	0.5	8.3	14.3	10.5	16.2	382	34.9	69.3	2.87	1.53	36.7	
HRS	9	2	62.6	82.3	0.25	0.0	0.0	0.0	1.4	1.4	9.1	11.1	10.7	11.5	343	31.2	71.0	2.73	1.62	22.5	
HRS	10	12	63.6	83.6	0.3	0.0	0.0	0.0	0.5	0.5	8.0	13.9	11.0	15.6	408	33.3	73.9	2.80	1.50	32.9	
HRS	11	6	62.9	82.7	0.5	0.0	0.0	0.0	0.5	0.5	8.5	14.0	13.1	15.6	403	29.0	78.2	2.69	1.51	34.9	
HRS	12	2	63.6	83.5	0.4	0.0	0.0	0.1	0.4	0.5	8.0	15.1	14.7	15.4	437	40.4	61.7	3.06	1.66	43.3	
HRS	13	2	61.4	80.7	0.2	0.0	0.1	0.0	0.5	0.6	7.6	12.2	11.5	12.8	371	33.4	71.7	2.81	1.58	30.7	
HRS	14	4	62.6	82.3	0.3	0.0	0.0	0.0	0.8	0.8	9.9	14.3	14.0	14.7	394	29.3	75.6	2.71	1.63	34.4	
	<b>Crop Year Average</b>																				
HRS	<b>2018</b>	67	62.8	82.6	0.3	0.0	0.0	0.0	0.7	0.7	8.4	14.1			389	33.3	71.2	2.81	1.54	35.4	
HRS	<b>2017</b>	74	62.2	81.7	0.4	0.0	0.1	0.0	0.8	0.9	9.1	14.6			384	33.0	72.3	2.81	1.52	35.4	



**BY PRODUCTION ZONES**

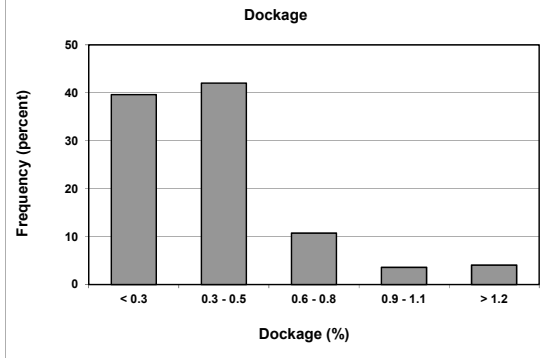
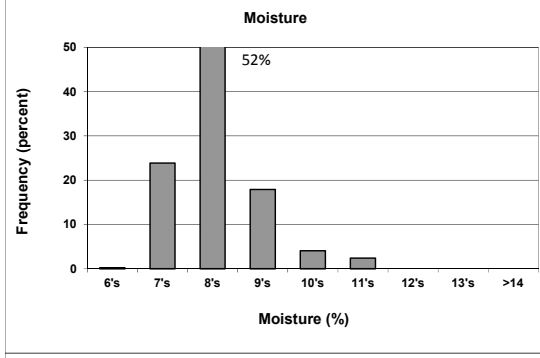
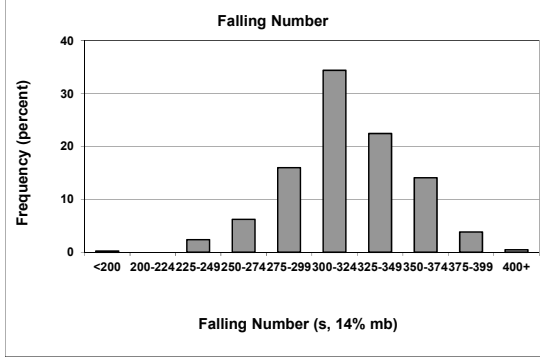
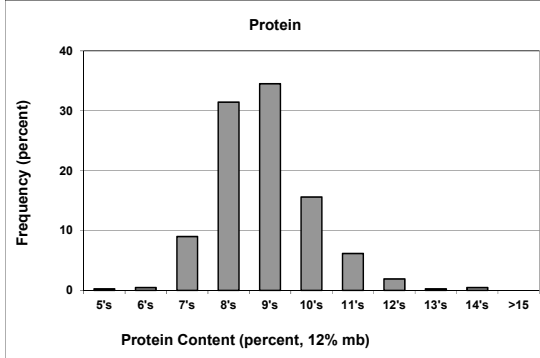
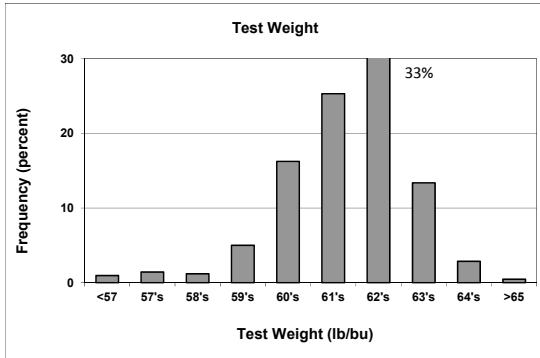
**Table 2**

2018 CROP WEEK 6, September 6, 2018																				
Grading Data											Quality Data									
Class	District	Number of Samples	Test Weight (lb/bu)	Test Weight (kg/hl)	Dockage (%)	Heat Damage (%)	Total Damage (%)	Foreign Material (%)	Shrunk & Broken (%)	Total Defects (%)	Moisture (%)	Protein (% 12% mb)			Falling Number (s, 14%mb)	Thousand Kernel Weight (g, 14% mb)	Kernel Hardness (-20 to 120)	Kernel Size (mm)	Ash (% 14% mb)	Wet Gluten (% 14% mb)
												Average	Low	High						
SWH	NC	149	61.6	81.0	0.4	0.0	0.0	0.0	0.6	0.6	8.2	9.2	6.4	12.5	304	34.3	27.2	2.71	1.27	21.1
SWH	NE	122	62.6	82.2	0.5	0.0	0.0	0.0	0.4	0.5	8.6	9.1	7.1	10.8	315	36.8	29.0	2.82	1.38	19.7
SWH	C	90	60.9	80.1	0.6	0.0	0.0	0.1	0.6	0.7	8.4	9.5	7.0	14.4	325	34.3	25.9	2.75	1.36	22.1
SWH	SW	11	62.3	82.0	0.4	0.0	0.0	0.0	0.3	0.3	10.7	8.6	7.4	10.4	325	40.6	21.8	2.87	1.42	18.8
SWH	SE	47	61.5	80.9	0.4	0.0	0.1	0.0	0.4	0.5	9.2	10.0	7.0	12.8	338	38.6	29.6	2.82	1.53	21.4
	<b>Crop Year Average</b>																			
SWH	<b>2018</b>	419	61.7	81.2	0.5	0.0	0.0	0.0	0.5	0.6	8.5	9.3			315	35.7	27.6	2.77	1.36	20.9
SWH	<b>2017</b>	512	60.9	80.0	0.5	0.0	0.0	0.1	0.5	0.6	8.9	9.6			335	35.5	30.1	2.75	1.32	20.2
WHCB	NC	91	60.9	80.2	0.5	0.0	0.0	0.1	0.8	0.9	7.8	9.1	6.4	13.6	311	33.5	26.1	2.61	1.26	16.6
WHCB	NE	20	62.0	81.5	0.6	0.0	0.0	0.0	0.8	0.8	8.5	8.9	7.5	10.2	337	30.6	33.9	2.62	1.35	15.1
WHCB	C	6	60.2	79.2	0.6	0.0	0.1	0.1	0.9	1.1	8.2	8.4	6.2	10.7	282	30.3	27.6	2.59	1.31	16.3
	<b>Crop Year Average</b>																			
WHCB	<b>2018</b>	117	61.1	80.3	0.5	0.0	0.0	0.1	0.8	0.9	8.0	9.0			315	32.9	27.5	2.61	1.28	16.3
WHCB	<b>2017</b>	96	60.2	79.2	0.5	0.0	0.0	0.0	1.0	1.1	8.3	9.4			348	32.5	30.6	2.56	1.27	17.1
HRW	NC	39	63.0	82.9	0.3	0.0	0.0	0.0	0.4	0.5	8.3	11.6	9.4	15.0	359	37.0	65.5	2.93	1.42	28.6
HRW	NE	36	63.9	84.0	0.3	0.0	0.0	0.0	0.4	0.4	8.2	10.2	8.7	14.2	351	38.8	63.9	2.98	1.29	21.8
HRW	C	10	61.4	80.8	0.8	0.0	0.0	0.1	0.5	0.6	8.4	12.3	9.3	14.9	374	30.1	70.2	2.68	1.40	27.1
HRW	SE	9	62.0	81.5	0.2	0.0	0.0	0.0	0.5	0.5	7.4	11.8	10.3	13.7	400	34.7	67.0	2.89	1.47	27.3
	<b>Crop Year Average</b>																			
HRW	<b>2018</b>	94	63.1	82.9	0.3	0.0	0.0	0.0	0.4	0.5	8.2	11.1			362	36.7	65.5	2.92	1.38	25.7
HRW	<b>2017</b>	93	62.4	82.0	0.4	0.0	0.0	0.0	0.5	0.5	8.4	11.5			387	35.3	69.7	2.82	1.34	24.8
HRS	NC	33	63.3	83.2	0.3	0.0	0.0	0.0	0.4	0.5	8.3	14.3	10.5	16.2	378	34.8	69.3	2.87	1.54	37.0
HRS	NE	16	63.3	83.2	0.4	0.0	0.0	0.0	0.5	0.5	8.3	13.4	10.7	15.6	392	32.2	75.6	2.76	1.49	31.6
HRS	C	10	60.9	80.1	0.5	0.0	0.0	0.1	2.0	2.0	8.2	14.6	11.7	16.3	403	30.6	70.6	2.72	1.53	36.0
HRS	SE	8	62.5	82.2	0.3	0.0	0.0	0.0	0.6	0.7	8.8	13.9	11.5	15.4	397	33.1	71.2	2.82	1.62	35.7
	<b>Crop Year Average</b>																			
HRS	<b>2018</b>	67	62.8	82.6	0.3	0.0	0.0	0.0	0.7	0.7	8.4	14.1			389	33.3	71.2	2.81	1.54	35.4
HRS	<b>2017</b>	74	62.2	81.7	0.4	0.0	0.1	0.0	0.8	0.9	9.1	14.6			384	33.0	72.3	2.81	1.52	35.4

# Distributions

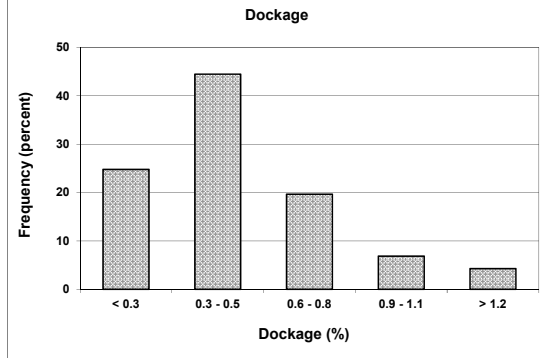
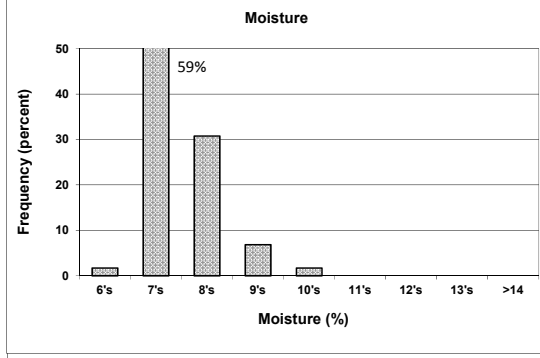
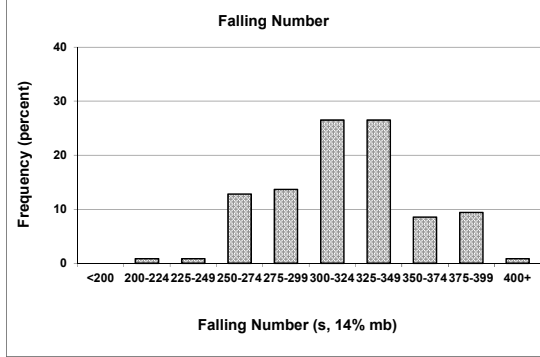
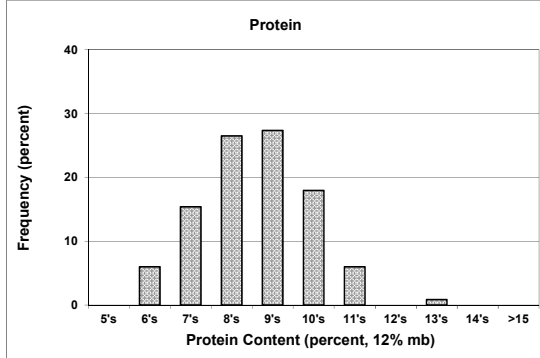
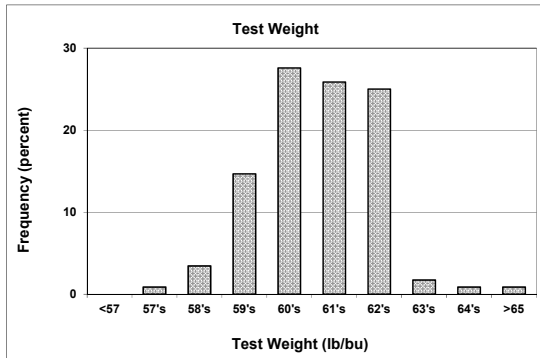
## SOFT WHITE WHEAT

419 SAMPLES



## WHITE CLUB WHEAT

117 SAMPLE



Prepared by: Wheat Marketing Center, Portland, Oregon