



2018 PACIFIC NORTHWEST CROP QUALITY REPORT

WEEK 5: August 30, 2018

We received and tested 598 samples so far for the Pacific Northwest 2018 wheat harvest.

Of the 194 wheat samples received for the fifth week, 99 were soft white (SWH), 49 were white club (WHCB), 15 were hard red winter (HRW), 21 were hard red spring (HRS), and 10 were hard white (HDWH). One-hundred and three samples (53%) came from District 8 (East Central Washington); 42 (22%) were from District 14 (Southeastern Idaho); 13 (7%) each were from Districts 4 (North Central Oregon) and 6\7 (Western Washington); 11 (6%) were from District 5 (Northeastern Oregon); and less than 10 each were from Districts 10 (Southeastern Washington), 1\2 (Western Oregon), and 9 (Northeastern Washington).

USDA Economic Statistics Districts (Table 1) showed the following:

SWH average test weight was 61.7 lb/bu compared to 60.9 lb/bu last year, average moisture was 8.5% compared to 8.9% last year, average protein (12% mb) was 9.3% compared to 9.6% last year, and average falling number value was 312 seconds compared to 335 seconds last year. Samples had heavy thousand kernel weight and large kernel size. The highest SWH whole meal wet gluten value (14% mb) was shown in District 13 (South Central Idaho) at 22.7% followed by District 4 at 22.5% with 10.0% and 9.4% protein contents (12% mb), respectively. WHCB weighted averages showed 8.0% wheat moisture, 9.0% (12% mb) wheat protein, and 313 seconds (14% mb) falling number value. HRW and HRS weighted averages indicated higher test weight, lower moisture, lower protein content, and similar falling number values when compared to last year.

We continue to report results from the six PNW Production Zones (Table 2): Northwest (NW), Southwest (SW), North Central (NC), Central (C), Northeast (NE), and Southeast (SE). The Zones are based on country elevator locations and climatic conditions. This week samples came from Zones NC (60%), SE (22%), C (15%), and less than 10% from Zones SW and NE. No samples were received from Zone NW.

The SWH average protein (12% mb) was the highest for Zone SE at 10.0% followed by Zone C at 9.5%, and the lowest for Zone SW at 8.6%. The WHCB average protein (12% mb) was the highest at 9.0% for Zones NC and NE with 78 and 13 samples, respectively.



BY USDA ECONOMIC STATISTICS DISTRICTS

Table 1

2018 CROP WEEK 5, August 30, 2018																				
		Grading Data										Quality Data								
Class	District	Number of Samples	Test Weight (lb/bu)	Test Weight (kg/ht)	Dockage (%)	Heat Damage (%)	Total Damage (%)	Foreign Material (%)	Shrunk & Broken (%)	Total Defects (%)	Moisture (%)	Protein (% 12% mb)			Falling Number (s, 14%mb)	Thousand Kernel Weight (g, 14% mb)	Kernel Hardness (-20 to 120)	Kernel Size (mm)	Ash (% 14% mb)	Wet Gluten (% 14% mb)
												Average	Low	High						
SWH	112	11	62.3	82.0	0.4	0.0	0.0	0.0	0.3	0.3	10.7	8.6	7.4	10.4	325	40.6	21.8	2.87	1.42	18.8
SWH	3	3	61.1	80.4	0.4	0.0	0.0	0.0	0.4	0.4	8.4	9.5	9.3	9.7	311	43.6	23.9	2.95	1.43	21.7
SWH	4	48	60.5	79.6	0.7	0.0	0.0	0.1	0.5	0.6	8.6	9.4	7.0	14.4	326	33.1	25.7	2.72	1.38	22.5
SWH	5	26	61.7	81.2	0.3	0.0	0.0	0.2	0.6	0.9	8.1	9.5	7.5	12.6	323	36.1	26.7	2.79	1.37	21.4
SWH	617	21	61.0	80.2	0.5	0.0	0.0	0.1	0.8	0.9	8.2	9.1	7.2	11.7	300	34.2	24.6	2.71	1.24	21.2
SWH	8	109	61.5	80.9	0.4	0.0	0.0	0.0	0.6	0.6	8.3	9.2	6.4	12.5	298	33.9	27.6	2.69	1.27	21.5
SWH	9	15	61.8	81.3	1.8	0.0	0.1	0.0	0.5	0.6	9.1	8.7	8.0	10.2	309	38.0	28.5	2.82	1.41	18.5
SWH	10	74	62.8	82.5	0.3	0.0	0.0	0.0	0.3	0.4	8.3	9.1	7.1	11.3	301	37.2	28.5	2.83	1.34	19.5
SWH	11	16	62.7	82.4	0.3	0.0	0.0	0.0	0.5	0.6	8.6	9.2	8.0	10.8	326	36.0	29.9	2.82	1.44	20.8
SWH	12	4	61.1	80.3	0.3	0.0	0.1	0.0	0.3	0.4	8.8	9.2	8.3	9.6	276	46.0	21.2	2.97	1.47	21.1
SWH	13	12	61.1	80.3	0.4	0.0	0.0	0.0	0.4	0.4	9.4	10.0	8.3	12.8	340	38.9	29.3	2.79	1.49	22.7
SWH	14	28	61.8	81.3	0.4	0.0	0.1	0.0	0.4	0.6	9.2	10.2	7.0	11.4	352	36.9	31.5	2.80	1.57	20.8
	Crop Year Average																			
SWH	2018	367	61.7	81.1	0.5	0.0	0.0	0.0	0.5	0.6	8.5	9.3			312	35.7	27.5	2.76	1.35	20.9
SWH	2017	512	60.9	80.0	0.5	0.0	0.0	0.1	0.5	0.6	8.9	9.6			335	35.5	30.1	2.75	1.32	20.2
WHCB	4	3	60.4	79.5	0.7	0.0	0.0	0.1	0.8	0.9	8.9	9.3	7.0	10.7	348	29.7	29.9	2.61	1.39	18.8
WHCB	5	2	60.4	79.5	0.5	0.0	0.3	0.1	1.2	1.5	7.6	8.3	7.9	8.6	269	29.5	30.7	2.53	1.15	16.7
WHCB	617	4	59.4	78.1	0.4	0.0	0.0	0.1	1.2	1.2	7.6	10.1	6.2	13.6	265	30.2	24.3	2.54	1.43	19.5
WHCB	8	73	60.9	80.1	0.5	0.0	0.0	0.1	0.8	0.9	7.8	8.9	6.4	11.8	309	33.9	25.2	2.62	1.25	16.0
WHCB	9	1	65.1	85.5	0.9	0.0	0.0	0.1	0.4	0.5	8.9	9.2	9.2	9.2	379	32.4	48.2	2.76472	1.33	18.1
WHCB	10	9	62.1	81.6	0.6	0.0	0.0	0.0	0.9	0.9	8.3	9.5	7.8	10.7	341	29.9	33.4	2.61	1.31	19.1
WHCB	11	5	62.2	81.8	0.4	0.0	0.0	0.0	0.6	0.6	8.9	8.1	7.5	9.4	342	31.1	35.8	2.71	1.41	11.0
	Crop Year Average																			
WHCB	2018	97	61.0	80.3	0.5	0.0	0.0	0.1	0.8	0.9	8.0	9.0			313	33.0	27.0	2.62	1.28	16.3
WHCB	2017	96	60.2	79.2	0.5	0.0	0.0	0.0	1.0	1.1	8.3	9.4			348	32.5	30.6	2.56	1.27	17.1
HRW	4	4	59.7	78.6	1.6	0.0	0.0	0.1	0.6	0.7	7.6	13.5	12.6	14.9	439	25.8	73.2	2.57	1.46	32.0
HRW	5	3	62.3	82.0	0.5	0.0	0.0	0.1	0.5	0.5	8.3	12.1	11.8	12.5	389	34.4	65.2	2.86	1.38	25.5
HRW	617	11	63.2	83.1	0.4	0.0	0.0	0.0	0.5	0.5	8.8	11.6	9.3	15.0	355	36.8	67.4	2.91	1.44	25.9
HRW	8	23	63.0	82.9	0.2	0.0	0.0	0.0	0.4	0.4	8.3	11.7	9.4	13.5	355	36.6	66.2	2.92	1.45	28.6
HRW	10	16	64.0	84.1	0.2	0.0	0.0	0.0	0.3	0.3	8.4	9.9	8.7	11.5	340	38.6	63.8	2.97	1.27	21.0
HRW	11	7	63.6	83.6	0.1	0.0	0.1	0.0	0.3	0.4	9.1	9.9	9.1	12.4	336	40.1	63.1	3.01	1.35	22.4
HRW	12	4	63.5	83.4	0.3	0.0	0.0	0.0	0.4	0.4	7.5	11.3	10.3	11.9	404	39.3	59.0	2.92	1.40	29.2
HRW	13	5	60.8	80.0	0.1	0.0	0.0	0.0	0.6	0.6	7.2	12.2	11.7	13.7	397	31.0	73.4	2.86	1.53	25.7
	Crop Year Average																			
HRW	2018	73	63.0	82.8	0.3	0.0	0.0	0.0	0.4	0.4	8.3	11.2			362	36.5	66.0	2.91	1.40	25.8
HRW	2017	93	62.4	82.0	0.4	0.0	0.0	0.0	0.5	0.5	8.4	11.5			387	35.3	69.7	2.82	1.34	24.8
HRS	4	2	58.6	77.1	0.7	0.0	0.0	0.1	0.8	0.9	8.3	14.8	13.9	15.6	438	27.0	71.3	2.64	1.51	32.4
HRS	5	3	60.9	80.1	0.5	0.0	0.0	0.1	2.9	3.0	8.2	13.8	11.7	16.2	414	30.9	69.1	2.69	1.58	33.2
HRS	617	6	64.4	84.6	0.3	0.0	0.0	0.0	0.9	0.9	8.6	14.1	11.9	15.2	348	36.5	67.0	2.91	1.51	38.5
HRS	8	14	63.3	83.2	0.3	0.0	0.1	0.0	0.5	0.6	8.4	14.7	12.0	16.2	384	36.0	67.8	2.90	1.60	37.1
HRS	10	11	63.7	83.8	0.3	0.0	0.0	0.0	0.5	0.5	7.9	13.9	11.0	15.6	406	33.1	74.4	2.79	1.52	32.8
HRS	11	2	61.8	81.2	0.5	0.0	0.0	0.1	0.8	0.8	8.8	14.4	13.1	15.6	426	25.9	78.6	2.56	1.69	32.5
HRS	12	2	63.6	83.5	0.4	0.0	0.0	0.1	0.4	0.5	8.0	15.1	14.7	15.4	437	40.4	61.7	3.06	1.66	43.3
HRS	13	2	61.4	80.7	0.2	0.0	0.1	0.0	0.5	0.6	7.6	12.2	11.5	12.8	371	33.4	71.7	2.81	1.58	30.7
HRS	14	4	62.6	82.3	0.3	0.0	0.0	0.0	0.8	0.8	9.9	14.3	14.0	14.7	394	29.3	75.6	2.71	1.63	34.4
	Crop Year Average																			
HRS	2018	46	63.0	82.8	0.3	0.0	0.0	0.0	0.7	0.8	8.4	14.2			393	33.7	70.5	2.82	1.57	35.4
HRS	2017	74	62.2	81.7	0.4	0.0	0.1	0.0	0.8	0.9	9.1	14.6			384	33.0	72.3	2.81	1.52	35.4



BY PRODUCTION ZONES

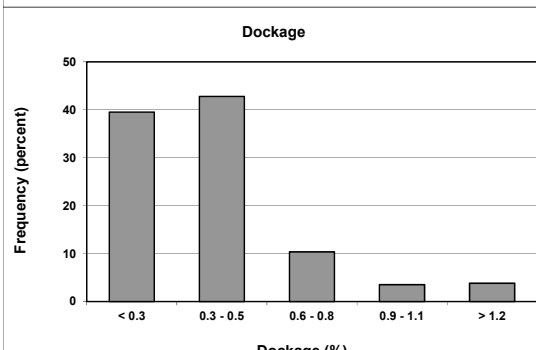
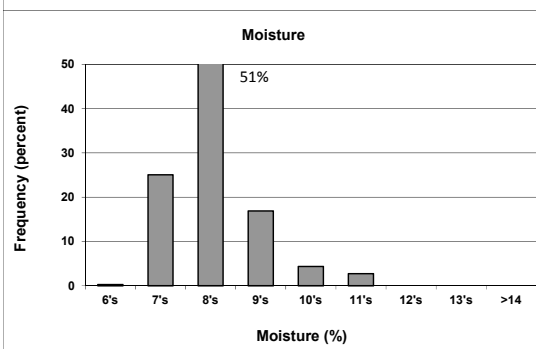
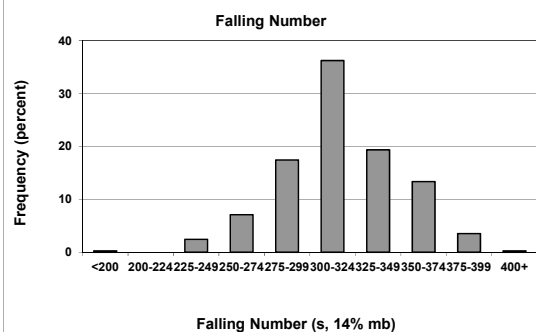
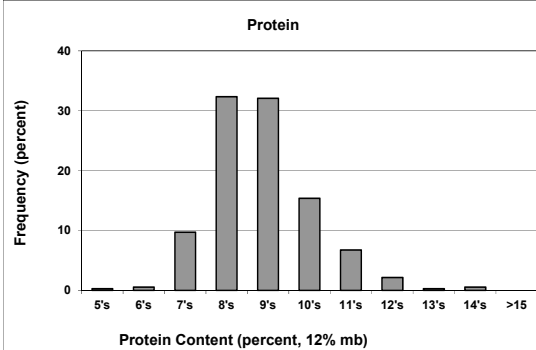
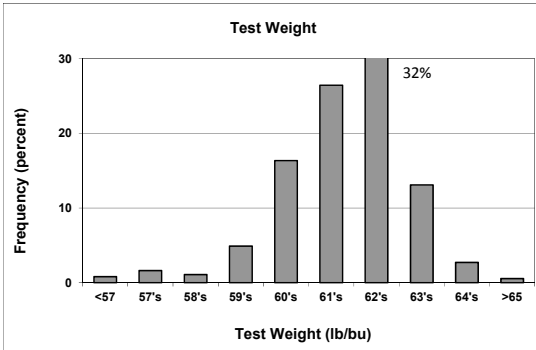
Table 2

2018 CROP WEEK 5, August 30, 2018																				
			Grading Data									Quality Data								
Class	District	Number of Samples	Test Weight (tbbu)	Test Weight (kg/ht)	Dockage (%)	Heat Damage (%)	Total Damage (%)	Foreign Material (%)	Shrunk & Broken (%)	Total Defects (%)	Moisture (%)	Protein (% 12% mb)			Falling Number (s, 14%mb)	Thousand Kernel Weight (g, 14% mb)	Kernel Hardness (-20 to 120)	Kernel Size (mm)	Ash (% 14% mb)	Wet Gluten (% 14% mb)
												Average	Low	High						
SWH	NC	146	61.6	81.0	0.4	0.0	0.0	0.0	0.6	0.6	8.2	9.2	6.4	12.5	304	34.3	27.2	2.71	1.28	21.1
SWH	NE	81	62.7	82.4	0.6	0.0	0.0	0.0	0.4	0.4	8.6	9.0	7.1	10.8	307	37.6	29.2	2.83	1.37	19.4
SWH	C	82	61.0	80.2	0.5	0.0	0.0	0.1	0.6	0.7	8.4	9.5	7.0	14.4	323	34.1	26.0	2.74	1.36	22.2
SWH	SW	11	62.3	82.0	0.4	0.0	0.0	0.0	0.3	0.3	10.7	8.6	7.4	10.4	325	40.6	21.8	2.87	1.42	18.8
SWH	SE	47	61.5	80.9	0.4	0.0	0.1	0.0	0.4	0.5	9.2	10.0	7.0	12.8	338	38.6	29.6	2.82	1.53	21.4
	Crop Year Average																			
SWH	2018	367	61.7	81.1	0.5	0.0	0.0	0.0	0.5	0.6	8.5	9.3			312	35.7	27.5	2.76	1.35	20.9
SWH	2017	512	60.9	80.0	0.5	0.0	0.0	0.1	0.5	0.6	8.9	9.6			335	35.5	30.1	2.75	1.32	20.2
WHCB	NC	78	60.9	80.1	0.5	0.0	0.0	0.1	0.8	0.9	7.8	9.0	6.4	13.6	310	33.5	25.7	2.62	1.26	16.3
WHCB	NE	13	62.3	82.0	0.6	0.0	0.0	0.0	0.6	0.7	8.7	9.0	7.5	10.2	343	31.0	34.5	2.66	1.36	16.6
WHCB	C	6	60.2	79.2	0.6	0.0	0.1	0.1	0.9	1.1	8.2	8.4	6.2	10.7	282	30.3	27.6	2.59	1.31	16.3
	Crop Year Average																			
WHCB	2018	97	61.0	80.3	0.5	0.0	0.0	0.1	0.8	0.9	8.0	9.0			313	33.0	27.0	2.62	1.28	16.3
WHCB	2017	96	60.2	79.2	0.5	0.0	0.0	0.0	1.0	1.1	8.3	9.4			348	32.5	30.6	2.56	1.27	17.1
HRW	NC	34	63.1	82.9	0.3	0.0	0.0	0.0	0.4	0.4	8.4	11.6	9.4	15.0	359	37.1	65.8	2.94	1.43	27.8
HRW	NE	20	64.1	84.2	0.2	0.0	0.0	0.0	0.3	0.3	8.6	9.9	8.7	12.4	338	39.5	63.7	2.99	1.30	21.2
HRW	C	10	61.4	80.8	0.8	0.0	0.0	0.1	0.5	0.6	8.4	12.3	9.3	14.9	374	30.1	70.2	2.68	1.40	27.1
HRW	SE	9	62.0	81.5	0.2	0.0	0.0	0.0	0.5	0.5	7.4	11.8	10.3	13.7	400	34.7	67.0	2.89	1.47	27.3
	Crop Year Average																			
HRW	2018	73	63.0	82.8	0.3	0.0	0.0	0.0	0.4	0.4	8.3	11.2			362	36.5	66.0	2.91	1.40	25.8
HRW	2017	93	62.4	82.0	0.4	0.0	0.0	0.0	0.5	0.5	8.4	11.5			387	35.3	69.7	2.82	1.34	24.8
HRS	NC	23	63.7	83.7	0.3	0.0	0.0	0.0	0.5	0.5	8.4	14.5	11.9	16.2	378	35.4	68.3	2.89	1.59	37.4
HRS	NE	9	63.5	83.5	0.3	0.0	0.0	0.0	0.4	0.4	8.1	13.8	11.0	15.6	401	32.7	76.4	2.75	1.50	31.4
HRS	C	6	60.3	79.3	0.6	0.0	0.0	0.1	2.4	2.5	8.2	14.3	11.7	16.2	425	29.6	69.5	2.68	1.52	33.4
HRS	SE	8	62.5	82.2	0.3	0.0	0.0	0.0	0.6	0.7	8.8	13.9	11.5	15.4	397	33.1	71.2	2.82	1.62	35.7
	Crop Year Average																			
HRS	2018	46	63.0	82.8	0.3	0.0	0.0	0.0	0.7	0.8	8.4	14.2			393	33.7	70.5	2.82	1.57	35.4
HRS	2017	74	62.2	81.7	0.4	0.0	0.1	0.0	0.8	0.9	9.1	14.6			384	33.0	72.3	2.81	1.52	35.4

Distributions

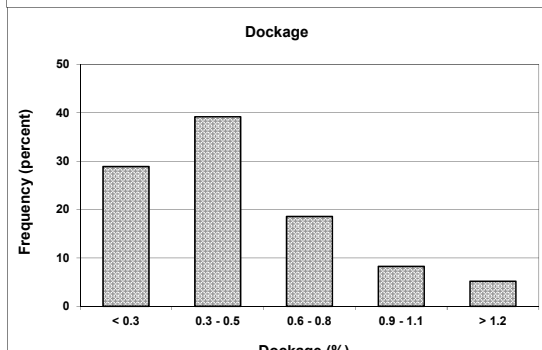
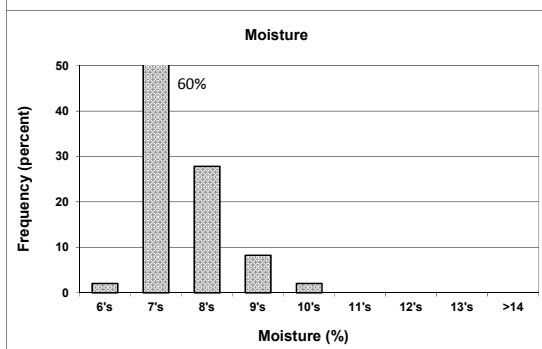
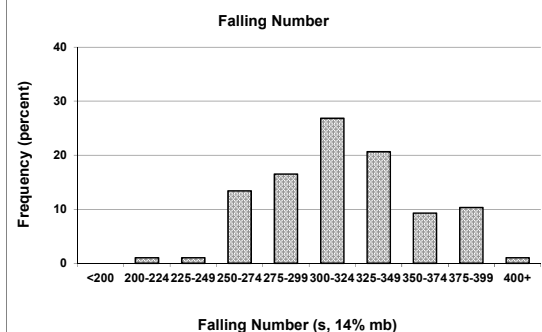
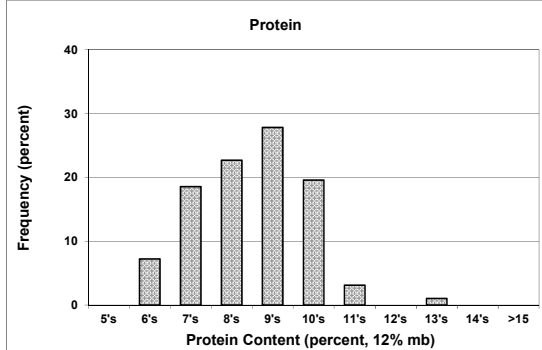
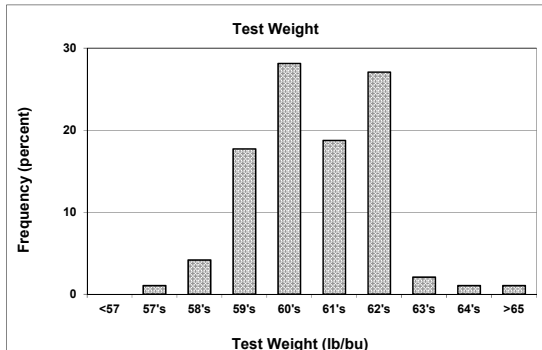
SOFT WHITE WHEAT

367 SAMPLES



WHITE CLUB WHEAT

97 SAMPLE



Prepared by: Wheat Marketing Center, Portland, Oregon