



## **2018 PACIFIC NORTHWEST CROP QUALITY REPORT**

WEEK 4: AUGUST 23, 2018

By the end of the fourth week reporting period for the 2018 Pacific Northwest wheat harvest, we received a total of 404 samples.

Of the 140 wheat samples we received in the fourth week, 98 were soft white (SWH), 13 were white club (WHCB), 19 were hard red winter (HRW), and 10 were hard red spring (HRS). Sixty-nine samples (49%) came from District 10 (Southeastern Washington), 30 (21%) came from District 11 (Northern Idaho), 16 (11%) came from District 4 (North Central Oregon), 13 (9%) came from District 9 (Northeastern Washington), 10 (7%) came from District 5 (Northeastern Oregon), and one each came from Districts 6\7 (Western Washington) and 8 (East Central Washington).

USDA Economic Statistics Districts (Table 1) showed the following:

Test weight averages for SWH ranged from 60.5 to 62.8 lb/bu, and dockage ranged from 0.3 to 1.9%. Wheat moisture content averages ranged from 8.1 to 10.7%. Average SWH wheat protein content (12% mb) was slightly decreased to 9.1% from 9.2% last week. SWH falling number average value (14% mb) was 305 seconds. Average WHCB test weight is higher than last year at 61.7 lb/bu. Average WHCB wheat protein (12% mb) was lower at 9.0% than 9.4% last year. Average WHCB falling number value (14% mb) was 309 seconds. WHCB had similar thousand kernel weight and kernel size averages to last year. Both HRW and HRS averages indicated a higher test weights, lower protein contents, sound falling number values, similar thousand kernel weights, and larger kernel sizes when compared to last year.

We will continue to report the six PNW Production (Table 2): Northwest (NW), Southwest (SW), North Central (NC), Central (C), Northeast (NE), and Southeast (SE). The Zones are based on country elevator locations and climatic conditions. Eighty percent of this week samples came from Zone NE, 19% came from Zone C, and 1% came from Zone NC.

So far SWH had higher test weight, the same dockage, similar grading factors, lower moisture, lower protein content, lower falling number, heavier thousand kernel weight, and larger kernel size when compared to last year. WHCB had similar trend to SWH when compared to last year.



BY USDA ECONOMIC STATISTICS DISTRICTS

Table 1

2018 CROP WEEK 4, August 23, 2018																				
Class	District	Number of Samples	Grading Data									Quality Data								
			Test Weight (lb/bu)	Test Weight (kg/hl)	Dockage (%)	Heat Damage (%)	Total Damage (%)	Foreign Material (%)	Shrunk & Broken (%)	Total Defects (%)	Moisture (%)	Protein (% 12% mb)			Falling Number (s. 14%mb)	Thousand Kernel Weight (g. 14% mb)	Kernel Hardness (20 to 120)	Kernel Size (mm)	Ash (% 14% mb)	Wet Gluten (% 14% mb)
												Average	Low	High						
SWH	1 2	6	62.4	82.0	0.4	0.0	0.0	0.0	0.4	0.4	10.7	8.4	7.5	9.4	311	41.3	20.2	2.87	1.36	18.5
SWH	3	3	61.1	80.4	0.4	0.0	0.0	0.0	0.4	0.4	8.4	9.5	9.3	9.7	311	43.6	23.9	2.95	1.43	21.7
SWH	4	39	60.5	79.5	0.7	0.0	0.0	0.1	0.6	0.7	8.6	9.3	7.0	14.4	324	33.3	26.0	2.73	1.37	22.1
SWH	5	19	61.9	81.3	0.3	0.0	0.0	0.3	0.6	0.9	8.1	9.3	7.9	11.4	314	37.1	26.6	2.82	1.38	21.0
SWH	6 7	14	60.8	79.9	0.6	0.0	0.0	0.2	0.7	0.9	8.4	8.8	7.2	11.7	292	35.7	23.2	2.77	1.23	19.6
SWH	8	69	61.3	80.6	0.4	0.0	0.0	0.0	0.6	0.7	8.3	9.1	6.4	12.2	287	33.1	28.0	2.67	1.27	21.1
SWH	9	14	62.0	81.5	1.9	0.0	0.1	0.0	0.4	0.5	9.0	8.7	8.0	10.2	309	38.5	29.3	2.84	1.41	18.4
SWH	10	72	62.8	82.5	0.3	0.0	0.0	0.0	0.3	0.4	8.3	9.0	7.1	10.3	300	37.2	28.5	2.83	1.33	19.4
SWH	11	16	62.7	82.4	0.3	0.0	0.0	0.0	0.5	0.6	8.6	9.2	8.0	10.8	326	36.0	29.9	2.82	1.44	20.8
SWH	12	4	61.1	80.3	0.3	0.0	0.1	0.0	0.3	0.4	8.8	9.2	8.3	9.6	276	46.0	21.2	2.97	1.47	21.1
SWH	13	12	61.1	80.3	0.4	0.0	0.0	0.0	0.4	0.4	9.4	10.0	8.3	12.8	340	38.9	29.3	2.79	1.49	22.7
	<b>Crop Year Average</b>																			
SWH	<b>2018</b>	268	61.7	81.1	0.5	0.0	0.0	0.1	0.5	0.6	8.5	9.1			305	35.9	27.4	2.77	1.34	20.6
SWH	<b>2017</b>	512	60.9	80.0	0.5	0.0	0.0	0.1	0.5	0.6	8.9	9.6			335	35.5	30.1	2.75	1.32	20.2
WHCB	4	2	60.9	80.1	0.9	0.0	0.0	0.2	0.9	1.0	9.2	10.4	10.1	10.7	352	29.5	33.6	2.63	1.47	22.2
WHCB	5	2	60.4	79.5	0.5	0.0	0.3	0.1	1.2	1.5	7.6	8.3	7.9	8.6	269	29.5	30.7	2.53	1.15	16.7
WHCB	6 7	3	59.4	78.2	0.4	0.0	0.0	0.0	1.3	1.4	7.6	11.4	10.2	13.6	301	28.9	27.6	2.50	1.44	23.3
WHCB	8	26	60.2	79.2	0.6	0.0	0.0	0.1	0.9	1.0	7.9	8.6	6.4	11.5	290	33.3	24.0	2.61	1.24	16.8
WHCB	9	1	65.1	85.5	0.9	0.0	0.0	0.1	0.4	0.5	8.9	9.2	9.2	9.2	379	32.4	48.2	2.76472	1.33	18.1
WHCB	10	9	62.1	81.6	0.6	0.0	0.0	0.0	0.9	0.9	8.3	9.5	7.8	10.7	341	29.9	33.4	2.61	1.31	19.1
WHCB	11	5	62.2	81.8	0.4	0.0	0.0	0.0	0.6	0.6	8.9	8.1	7.5	9.4	342	31.1	35.8	2.71	1.41	11.0
	<b>Crop Year Average</b>																			
WHCB	<b>2018</b>	48	60.9	80.1	0.6	0.0	0.0	0.1	0.9	1.0	8.1	9.0			309	31.8	28.4	2.61	1.29	17.3
WHCB	<b>2017</b>	96	60.2	79.2	0.5	0.0	0.0	0.0	1.0	1.1	8.3	9.4			348	32.5	30.6	2.56	1.27	17.1
HRW	4	2	57.8	76.1	2.9	0.0	0.0	0.2	0.6	0.8	7.8	13.8	12.8	14.9	445	22.1	74.7	2.42	1.47	33.3
HRW	5	1	63.7	83.7	0.5	0.0	0.0	0.1	0.5	0.6	8.3	12.5	12.5	12.5	357	32.5	69.9	2.78	1.40	28.3
HRW	6 7	7	62.9	82.7	0.3	0.0	0.0	0.0	0.5	0.6	8.9	11.7	9.3	15.0	361	34.8	68.7	2.82	1.43	26.1
HRW	8	16	62.9	82.7	0.2	0.0	0.0	0.0	0.4	0.5	8.5	11.8	10.1	13.2	348	35.5	68.7	2.85	1.48	29.5
HRW	10	16	64.0	84.1	0.2	0.0	0.0	0.0	0.3	0.3	8.4	9.9	8.7	11.5	340	38.6	63.8	2.97	1.27	21.0
HRW	11	7	63.6	83.6	0.1	0.0	0.1	0.0	0.3	0.4	9.1	9.9	9.1	12.4	336	40.1	63.1	3.01	1.35	22.4
HRW	12	4	63.5	83.4	0.3	0.0	0.0	0.0	0.4	0.4	7.5	11.3	10.3	11.9	404	39.3	59.0	2.92	1.40	29.2
HRW	13	5	60.8	80.0	0.1	0.0	0.0	0.0	0.6	0.6	7.2	12.2	11.7	13.7	397	31.0	73.4	2.86	1.53	25.7
	<b>Crop Year Average</b>																			
HRW	<b>2018</b>	58	63.0	82.8	0.3	0.0	0.0	0.0	0.4	0.4	8.4	11.1			357	36.2	66.6	2.89	1.40	25.6
HRW	<b>2017</b>	93	62.4	82.0	0.4	0.0	0.0	0.0	0.5	0.5	8.4	11.5			387	35.3	69.7	2.82	1.34	24.8
HRS	4	1	61.0	80.2	0.1	0.0	0.0	0.0	0.4	0.4	7.7	13.9	13.9	13.9	480	26.1	74.2	2.65	1.35	31.3
HRS	5	1	61.4	80.7	0.2	0.0	0.0	0.0	0.9	0.9	8.5	13.6	13.6	13.6	374	32.3	71.1	2.79	1.69	34.0
HRS	6 7	5	64.9	85.3	0.2	0.0	0.0	0.0	0.2	0.2	8.8	13.9	11.9	15.2	335	37.7	66.9	2.95	1.53	39.1
HRS	8	5	63.2	83.0	0.2	0.0	0.2	0.0	0.4	0.5	8.8	14.0	12.0	15.4	363	34.3	69.2	2.84	1.62	34.6
HRS	10	7	64.0	84.2	0.3	0.0	0.0	0.0	0.3	0.3	8.0	13.6	11.0	14.9	395	34.7	75.8	2.80	1.45	31.1
HRS	11	2	61.8	81.2	0.5	0.0	0.0	0.1	0.8	0.8	8.8	14.4	13.1	15.6	426	25.9	78.6	2.56	1.69	32.5
HRS	12	2	63.6	83.5	0.4	0.0	0.0	0.1	0.4	0.5	8.0	15.1	14.7	15.4	437	40.4	61.7	3.06	1.66	43.3
HRS	13	2	61.4	80.7	0.2	0.0	0.1	0.0	0.5	0.6	7.6	12.2	11.5	12.8	371	33.4	71.7	2.81	1.58	30.7
	<b>Crop Year Average</b>																			
HRS	<b>2018</b>	25	63.4	83.3	0.2	0.0	0.0	0.0	0.4	0.4	8.3	13.8			383	34.4	71.2	2.83	1.55	34.6
HRS	<b>2017</b>	74	62.2	81.7	0.4	0.0	0.1	0.0	0.8	0.9	9.1	14.6			384	33.0	72.3	2.81	1.52	35.4



**BY PRODUCTION ZONES**

Table 2

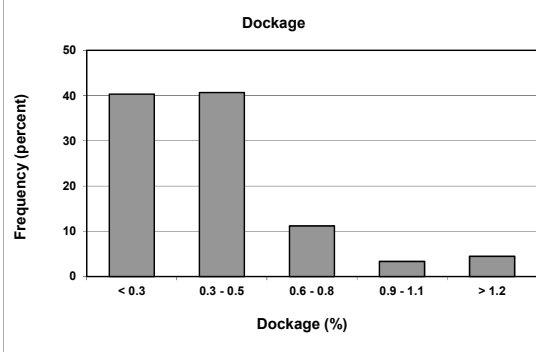
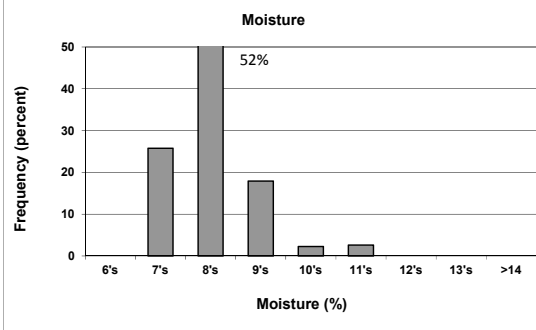
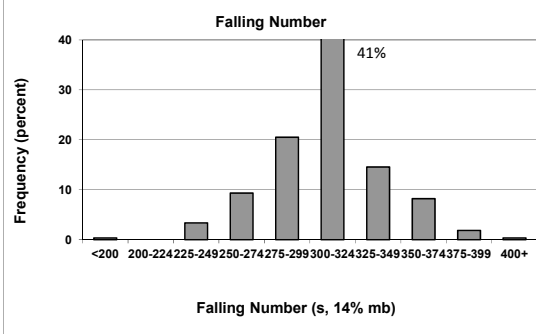
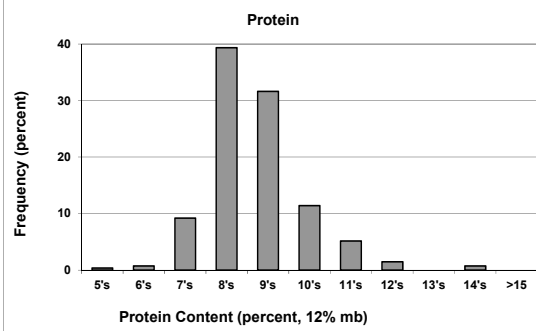
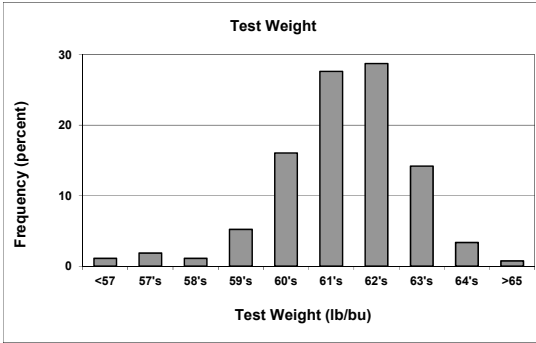
2018 CROP WEEK 4, August 23, 2018																				
Class	District	Number of Samples	Grading Data										Quality Data							
			Test Weight (lb/bu)	Test Weight (kg/hl)	Dockage (%)	Heat Damage (%)	Total Damage (%)	Foreign Material (%)	Shrunk & Broken (%)	Total Defects (%)	Moisture (%)	Protein (% 12% mb)			Falling Number (s, 14%mb)	Thousand Kernel Weight (g, 14% mb)	Kernel Hardness (-20 to 120)	Kernel Size (mm)	Ash (% 14% mb)	Wet Gluten (% 14% mb)
												Average	Low	High						
SWH	NC	100	61.4	80.8	0.4	0.0	0.0	0.0	0.6	0.6	8.2	9.0	6.4	12.2	295	34.0	27.2	2.71	1.28	20.5
SWH	NE	80	62.7	82.5	0.6	0.0	0.0	0.0	0.4	0.4	8.6	9.0	7.1	10.8	307	37.7	29.3	2.84	1.37	19.4
SWH	C	63	60.9	80.1	0.5	0.0	0.0	0.1	0.6	0.8	8.5	9.3	7.0	14.4	319	34.5	26.2	2.75	1.36	21.8
SWH	SW	6	62.4	82.0	0.4	0.0	0.0	0.0	0.4	0.4	10.7	8.4	7.5	9.4	311	41.3	20.2	2.87	1.36	18.5
SWH	SE	19	61.1	80.3	0.3	0.0	0.0	0.0	0.4	0.4	9.1	9.8	8.3	12.8	319	41.2	26.7	2.85	1.47	22.2
	<b>Crop Year Average</b>																			
SWH	<b>2018</b>	268	61.7	81.1	0.5	0.0	0.0	0.1	0.5	0.6	8.5	9.1			305	35.9	27.4	2.77	1.34	20.6
SWH	<b>2017</b>	512	60.9	80.0	0.5	0.0	0.0	0.1	0.5	0.6	8.9	9.6			335	35.5	30.1	2.75	1.32	20.2
WHCB	NC	31	60.3	79.3	0.5	0.0	0.0	0.1	1.0	1.0	7.9	8.9	6.4	13.6	294	32.5	25.4	2.60	1.26	17.3
WHCB	NE	13	62.3	82.0	0.6	0.0	0.0	0.0	0.6	0.7	8.7	9.0	7.5	10.2	343	31.0	34.5	2.66	1.36	16.6
WHCB	C	4	60.7	79.8	0.7	0.0	0.1	0.1	1.0	1.3	8.4	9.3	7.9	10.7	304	29.5	32.2	2.58	1.31	19.4
	<b>Crop Year Average</b>																			
WHCB	<b>2018</b>	48	60.9	80.1	0.6	0.0	0.0	0.1	0.9	1.0	8.1	9.0			309	31.8	28.4	2.61	1.29	17.3
WHCB	<b>2017</b>	96	60.2	79.2	0.5	0.0	0.0	0.0	1.0	1.1	8.3	9.4			348	32.5	30.6	2.56	1.27	17.1
HRW	NC	23	62.9	82.6	0.2	0.0	0.0	0.0	0.4	0.5	8.4	11.7	9.9	15.0	358	35.9	67.5	2.87	1.45	28.6
HRW	NE	20	64.1	84.2	0.2	0.0	0.0	0.0	0.3	0.3	8.6	9.9	8.7	12.4	338	39.5	63.7	2.99	1.30	21.2
HRW	C	6	61.3	80.6	1.1	0.0	0.0	0.1	0.6	0.6	8.8	12.1	9.3	14.9	349	28.6	72.2	2.60	1.40	26.8
HRW	SE	9	62.0	81.5	0.2	0.0	0.0	0.0	0.5	0.5	7.4	11.8	10.3	13.7	400	34.7	67.0	2.89	1.47	27.3
	<b>Crop Year Average</b>																			
HRW	<b>2018</b>	58	63.0	82.8	0.3	0.0	0.0	0.0	0.4	0.4	8.4	11.1			357	36.2	66.6	2.89	1.40	25.6
HRW	<b>2017</b>	93	62.4	82.0	0.4	0.0	0.0	0.0	0.5	0.5	8.4	11.5			387	35.3	69.7	2.82	1.34	24.8
HRS	NC	10	64.1	84.2	0.2	0.0	0.1	0.0	0.3	0.4	8.8	14.0	11.9	15.4	349	36.0	68.0	2.89	1.58	36.9
HRS	NE	9	63.5	83.5	0.3	0.0	0.0	0.0	0.4	0.4	8.1	13.8	11.0	15.6	401	32.7	76.4	2.75	1.50	31.4
HRS	C	2	61.2	80.5	0.2	0.0	0.0	0.0	0.7	0.7	8.1	13.8	13.6	13.9	419	29.2	72.7	2.72	1.52	32.7
HRS	SE	4	62.5	82.1	0.3	0.0	0.0	0.1	0.4	0.5	7.8	13.6	11.5	15.4	401	36.9	66.7	2.94	1.62	37.0
	<b>Crop Year Average</b>																			
HRS	<b>2018</b>	25	63.4	83.3	0.2	0.0	0.0	0.0	0.4	0.4	8.3	13.8			383	34.4	71.2	2.83	1.55	34.6
HRS	<b>2017</b>	74	62.2	81.7	0.4	0.0	0.1	0.0	0.8	0.9	9.1	14.6			384	33.0	72.3	2.81	1.52	35.4

1200 N.W. Naito Parkway, Suite 230, Portland, OR 97209-2831  
 Ph: (503) 295-0823 Fax: (503) 295-2735 Email: info@wmcinc.org

# Distributions

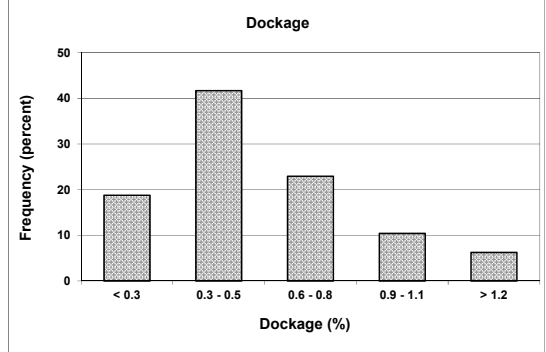
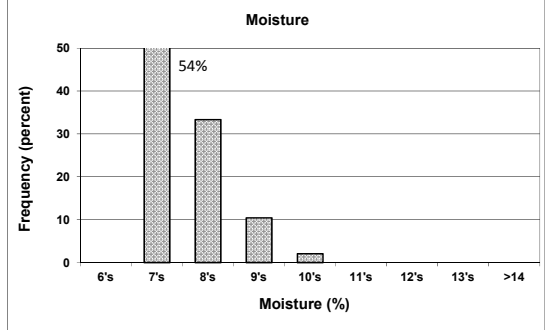
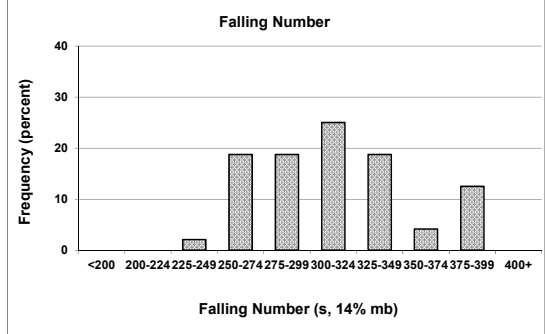
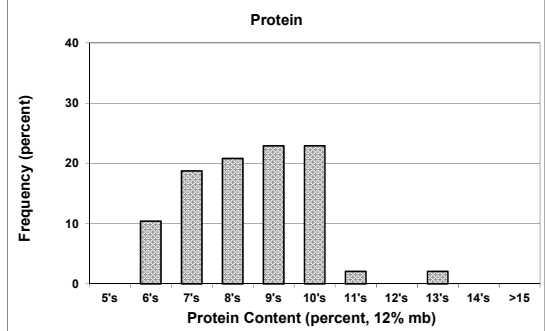
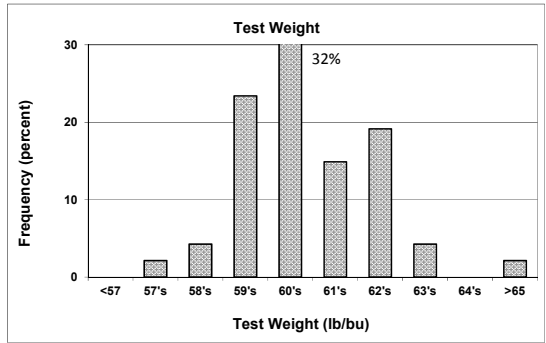
## SOFT WHITE WHEAT

268 SAMPLES



## WHITE CLUB WHEAT

48 SAMPLE



Prepared by: Wheat Marketing Center, Portland, Oregon