



2018 PACIFIC NORTHWEST CROP QUALITY REPORT

WEEK 3: AUGUST 16, 2018

By the end of the third week reporting period for the 2018 Pacific Northwest wheat harvest, we received 264 samples.

Of the 160 wheat samples we received in the third week, 102 were soft white (SWH), 26 were white club (WHCB), 19 were hard red winter (HRW), 8 were hard red spring (HRS), 4 were hard white, and 1 was western white. Eighty-eight samples (55%) came from District 8 (East Central Washington), 23 (14%) came from District 13 (South Central Idaho), 15 (9%) came from Districts 6/7 (Western Washington), 10 (6%) came from District 12 (Southwestern Idaho), and less than 10 each came from Districts 3 (Southeastern Oregon), 4 (North Central Oregon), 5 (Northeastern Oregon), 9 (Northeastern Washington), and 10 (Southeastern Washington).

USDA Economic Statistics Districts (Table 1) showed the following: Test weight averages for SWH ranged from 57.5 to 62.4 lb/bu (75.7 to 82.0 kg/hl), and dockage ranged from 0.2 to 0.7%. Wheat moisture content averages ranged from 8.0 to 10.7%. Average SWH wheat protein content (12% mb) decreased slightly to 9.2% from 9.3% last week. SWH falling number average value (14% mb) was 303 seconds. Thousand kernel weight (14% mb) and kernel size were similar to last year averages. Average WHCB test weight was slightly higher at 60.3 lb/bu compared with 60.2 lb/bu last year. Average WHCB wheat protein (12% mb) was 8.9% compared with 10.2% last week and 9.4% last year. Average WHCB falling number value (14% mb) went down to 296 seconds from 311 seconds last week. HRW averages appeared to have higher test weights, higher protein content, and sound falling number value when compared to last year. HRS follows the same trend as HRW except for the protein content that is lower than last year for about 20% of the samples tested.

We will continue to report the six PNW Production Zones (Table 2): Northwest (NW), Southwest (SW), North Central (NC), Central (C), Northeast (NE), and Southeast (SE). The Zones are based on country elevator locations and climatic conditions. Sixty-nine percent of this week samples came from Zone NC, 23% came from Zone SE, and less than 10% each came from Zones C and NE.

As of the third week, SWH had higher test weight (61.3 lb/bu); slightly lower dockage (0.4%), similar grading factors, lower moisture (8.4%), lower protein (9.2%), lower falling number value (303 seconds), similar thousand kernel weight, and similar kernel size when compared to last year.



BY USDA ECONOMIC STATISTICS DISTRICTS

Table 1

2018 CROP WEEK 3, August 16, 2018																				
Class	District	Number of Samples	Grading Data								Quality Data									
			Test Weight (lb/bu)	Test Weight (kg/hl)	Dockage (%)	Heat Damage (%)	Total Damage (%)	Foreign Material (%)	Shrunk & Broken (%)	Total Defects (%)	Moisture (%)	Protein (% 12% mb)			Falling Number (s, 14%mb)	Thousand Kernel Weight (g, 14% mb)	Kernel Hardness (20 to 120)	Kernel Size (mm)	Ash (% 14% mb)	Wet Gluten (% 14% mb)
												Average	Low	High						
SWH	1 2	6	62.4	82.0	0.4	0.0	0.0	0.0	0.4	0.4	10.7	8.4	7.5	9.4	311	41.3	20.2	2.87	1.36	18.5
SWH	3	3	61.1	80.4	0.4	0.0	0.0	0.0	0.4	0.4	8.4	9.5	9.3	9.7	311	43.6	23.9	2.95	1.43	21.7
SWH	4	24	60.3	79.3	0.6	0.0	0.0	0.1	0.6	0.7	8.3	9.6	7.4	14.4	331	32.3	28.0	2.69	1.36	23.4
SWH	5	11	61.8	81.2	0.2	0.0	0.1	0.0	0.6	0.7	8.0	9.1	8.1	11.4	311	36.2	26.8	2.78	1.34	20.4
SWH	6 7	13	60.8	79.9	0.7	0.0	0.0	0.2	0.7	0.9	8.4	8.8	7.2	11.7	290	35.8	23.0	2.78	1.23	19.5
SWH	8	68	61.2	80.5	0.4	0.0	0.0	0.0	0.6	0.7	8.3	9.1	6.4	12.2	287	33.0	28.0	2.67	1.27	21.2
SWH	9	2	57.5	75.7	0.6	0.0	0.0	0.0	0.5	0.5	8.6	8.7	8.5	8.9	327	31.7	13.7	2.65	1.66	19.7
SWH	10	27	62.4	82.0	0.3	0.0	0.0	0.0	0.3	0.3	8.0	9.0	7.5	10.3	300	35.8	28.4	2.81	1.32	19.8
SWH	12	4	61.1	80.3	0.3	0.0	0.1	0.0	0.3	0.4	8.8	9.2	8.3	9.6	276	46.0	21.2	2.97	1.47	21.1
SWH	13	12	61.1	80.3	0.4	0.0	0.0	0.0	0.4	0.4	9.4	10.0	8.3	12.8	340	38.9	29.3	2.79	1.49	22.7
	Crop Year Average																			
SWH	2018	170	61.3	80.6	0.4	0.0	0.0	0.0	0.5	0.6	8.4	9.2			303	35.0	27.0	2.74	1.32	21.1
SWH	2017	512	60.9	80.0	0.5	0.0	0.0	0.1	0.5	0.6	8.9	9.6			335	35.5	30.1	2.75	1.32	20.2
WHCB	4	1	60.1	79.1	1.3	0.0	0.0	0.2	1.1	1.3	10.6	10.1	10.1	10.1	334	29.5	27.4	2.58	1.25	20.7
WHCB	5	2	60.4	79.5	0.5	0.0	0.3	0.1	1.2	1.5	7.6	8.3	7.9	8.6	269	29.5	30.7	2.53	1.15	16.7
WHCB	6 7	3	59.4	78.2	0.4	0.0	0.0	0.0	1.3	1.4	7.6	11.4	10.2	13.6	301	28.9	27.6	2.50	1.44	23.3
WHCB	8	26	60.2	79.2	0.6	0.0	0.0	0.1	0.9	1.0	7.9	8.6	6.4	11.5	290	33.3	24.0	2.61	1.24	16.8
WHCB	10	3	61.8	81.2	0.6	0.0	0.0	0.1	1.1	1.2	7.8	9.5	7.8	10.7	347	27.5	39.0	2.58	1.30	17.1
	Crop Year Average																			
WHCB	2018	35	60.3	79.3	0.6	0.0	0.0	0.1	1.0	1.1	8.0	8.9			296	32.1	26.1	2.59	1.26	17.5
WHCB	2017	96	60.2	79.2	0.5	0.0	0.0	0.0	1.0	1.1	8.3	9.4			348	32.5	30.6	2.56	1.27	17.1
HRW	4	2	57.8	76.1	2.9	0.0	0.0	0.2	0.6	0.8	7.8	13.8	12.8	14.9	445	22.1	74.2	2.42	1.47	33.3
HRW	6 7	7	62.9	82.7	0.3	0.0	0.0	0.0	0.5	0.6	8.9	11.7	9.3	15.0	361	34.8	68.7	2.82	1.43	26.1
HRW	8	16	62.9	82.7	0.2	0.0	0.0	0.0	0.4	0.5	8.5	11.8	10.1	13.2	348	35.5	68.7	2.85	1.48	29.5
HRW	10	5	63.1	82.9	0.1	0.0	0.0	0.0	0.2	0.2	8.0	10.3	9.4	10.7	337	35.5	65.1	2.88	1.25	22.5
HRW	12	4	63.5	83.4	0.3	0.0	0.0	0.0	0.4	0.4	7.5	11.3	10.3	11.9	404	39.3	59.0	2.92	1.40	29.2
HRW	13	5	60.8	80.0	0.1	0.0	0.0	0.0	0.6	0.6	7.2	12.2	11.7	13.7	397	31.0	73.4	2.86	1.53	25.7
	Crop Year Average																			
HRW	2018	39	62.5	82.1	0.3	0.0	0.0	0.0	0.5	0.5	8.2	11.7			366	34.5	68.1	2.83	1.44	27.7
HRW	2017	93	62.4	82.0	0.4	0.0	0.0	0.0	0.5	0.5	8.4	11.5			387	35.3	69.7	2.82	1.34	24.8
HRS	4	1	61.0	80.2	0.1	0.0	0.0	0.0	0.4	0.4	7.7	13.9	13.9	13.9	480	26.1	74.2	2.65	1.35	31.3
HRS	6 7	5	64.9	85.3	0.2	0.0	0.0	0.0	0.2	0.2	8.8	13.9	11.9	15.2	335	37.7	66.9	2.95	1.53	39.1
HRS	8	5	63.2	83.0	0.2	0.0	0.0	0.0	0.4	0.5	8.8	14.0	12.0	15.4	363	34.3	69.2	2.84	1.62	34.6
HRS	12	2	63.6	83.5	0.4	0.0	0.0	0.1	0.4	0.5	8.0	15.1	14.7	15.4	437	40.4	61.7	3.06	1.66	43.3
HRS	13	2	61.4	80.7	0.2	0.0	0.1	0.0	0.5	0.6	7.6	12.2	11.5	12.8	371	33.4	71.7	2.81	1.58	30.7
	Crop Year Average																			
HRS	2018	15	63.4	83.4	0.2	0.0	0.1	0.0	0.3	0.4	8.5	13.9			373	35.6	68.1	2.89	1.57	36.5
HRS	2017	74	62.2	81.7	0.4	0.0	0.1	0.0	0.8	0.9	9.1	14.6			384	33.0	72.3	2.81	1.52	35.4



BY PRODUCTION ZONES

Table 2

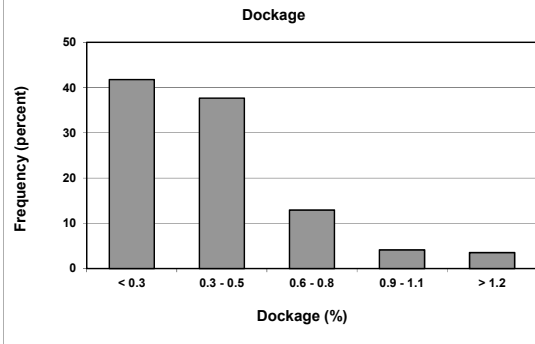
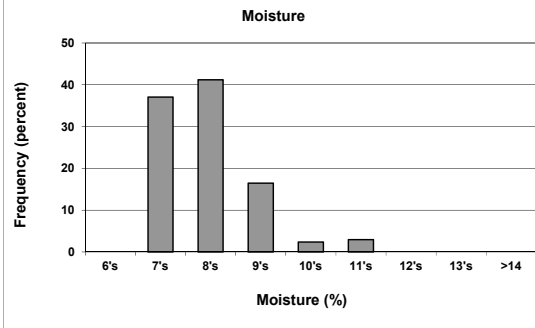
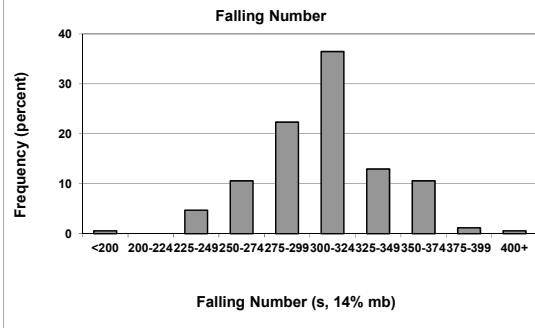
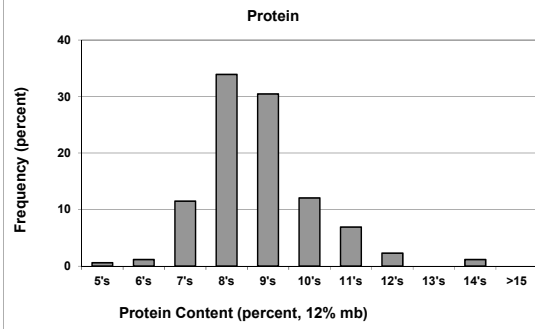
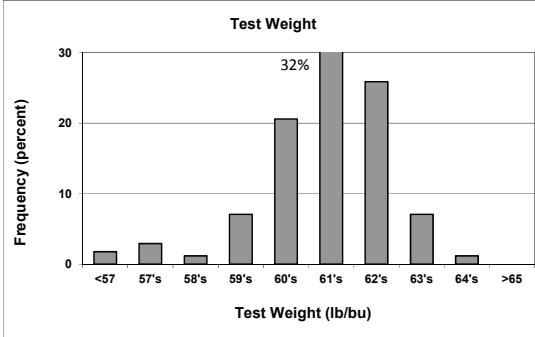
2018 CROP WEEK 3, August 16, 2018																				
		Grading Data										Quality Data								
Class	District	Number of Samples	Test Weight (lb/bu)	Test Weight (kg/hl)	Dockage (%)	Heat Damage (%)	Total Damage (%)	Foreign Material (%)	Shrunk & Broken (%)	Total Defects (%)	Moisture (%)	Protein (% 12% mb)			Falling Number (s, 14%mb)	Thousand Kernel Weight (g, 14% mb)	Kernel Hardness (-20 to 120)	Kernel Size (mm)	Ash (% 14% mb)	Wet Gluten (% 14% mb)
												Average	Low	High						
SWH	NC	99	61.4	80.8	0.4	0.0	0.0	0.0	0.6	0.6	8.2	9.0	6.4	12.2	295	33.9	27.2	2.71	1.28	20.6
SWH	NE	7	61.0	80.2	0.4	0.0	0.0	0.0	0.2	0.2	8.3	8.8	8.1	9.3	313	35.4	28.1	2.76	1.40	19.6
SWH	C	39	60.8	80.0	0.5	0.0	0.0	0.1	0.6	0.7	8.2	9.5	7.4	14.4	323	33.5	27.5	2.72	1.34	22.6
SWH	SW	6	62.4	82.0	0.4	0.0	0.0	0.0	0.4	0.4	10.7	8.4	7.5	9.4	311	41.3	20.2	2.87	1.36	18.5
SWH	SE	19	61.1	80.3	0.3	0.0	0.0	0.0	0.4	0.4	9.1	9.8	8.3	12.8	319	41.2	26.7	2.85	1.47	22.2
	Crop Year Average																			
SWH	2018	170	61.3	80.6	0.4	0.0	0.0	0.0	0.5	0.6	8.4	9.2			303	35.0	27.0	2.74	1.32	21.1
SWH	2017	512	60.9	80.0	0.5	0.0	0.0	0.1	0.5	0.6	8.9	9.6			335	35.5	30.1	2.75	1.32	20.2
WHCB	NC	31	60.3	79.3	0.5	0.0	0.0	0.1	1.0	1.0	7.9	8.9	6.4	13.6	294	32.5	25.4	2.60	1.26	17.3
WHCB	NE	1	60.8	80.0	0.9	0.0	0.0	0.0	0.7	0.7	7.9	10.0	10.0	10.0	347	28.0	38.6	2.53	1.43	22.0
WHCB	C	3	60.3	79.3	0.7	0.0	0.2	0.1	1.2	1.4	8.6	8.9	7.9	10.1	287	29.5	29.6	2.55	1.19	18.0
	Crop Year Average																			
WHCB	2018	35	60.3	79.3	0.6	0.0	0.0	0.1	1.0	1.1	8.0	8.9			296	32.1	26.1	2.59	1.26	17.5
WHCB	2017	96	60.2	79.2	0.5	0.0	0.0	0.0	1.0	1.1	8.3	9.4			348	32.5	30.6	2.56	1.27	17.1
HRW	NC	23	62.9	82.6	0.2	0.0	0.0	0.0	0.4	0.5	8.4	11.7	9.9	15.0	358	35.9	67.5	2.87	1.45	28.6
HRW	NE	2	64.0	84.0	0.1	0.0	0.0	0.0	0.2	0.2	7.2	10.1	9.4	10.7	329	34.0	68.9	2.82	1.25	22.1
HRW	C	5	60.8	80.0	1.3	0.0	0.0	0.1	0.6	0.6	8.9	12.1	9.3	14.9	348	27.8	72.7	2.57	1.41	26.5
HRW	SE	9	62.0	81.5	0.2	0.0	0.0	0.0	0.5	0.5	7.4	11.8	10.3	13.7	400	34.7	67.0	2.89	1.47	27.3
	Crop Year Average																			
HRW	2018	39	62.5	82.1	0.3	0.0	0.0	0.0	0.5	0.5	8.2	11.7			366	34.5	68.1	2.83	1.44	27.7
HRW	2017	93	62.4	82.0	0.4	0.0	0.0	0.0	0.5	0.5	8.4	11.5			387	35.3	69.7	2.82	1.34	24.8
HRS	NC	10	64.1	84.2	0.2	0.0	0.1	0.0	0.3	0.4	8.8	14.0	11.9	15.4	349	36.0	68.0	2.89	1.58	36.9
HRS	C	1	61.0	80.2	0.1	0.0	0.0	0.0	0.4	0.4	7.7	13.9	13.9	13.9	480	26.1	74.2	2.65	1.35	31.3
HRS	SE	4	62.5	82.1	0.3	0.0	0.0	0.1	0.4	0.5	7.8	13.6	11.5	15.4	401	36.9	66.7	2.94	1.62	37.0
	Crop Year Average																			
HRS	2018	15	63.4	83.4	0.2	0.0	0.1	0.0	0.3	0.4	8.5	13.9			373	35.6	68.1	2.89	1.57	36.5
HRS	2017	74	62.2	81.7	0.4	0.0	0.1	0.0	0.8	0.9	9.1	14.6			384	33.0	72.3	2.81	1.52	35.4

1200 N.W. Naito Parkway, Suite 230, Portland, OR 97209-2831
 Ph: (503) 295-0823 Fax: (503) 295-2735 Email: info@wmcinc.org

Distributions

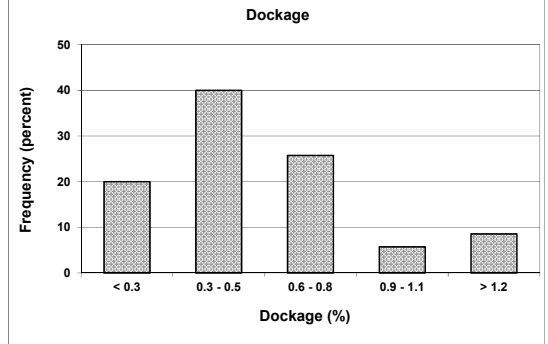
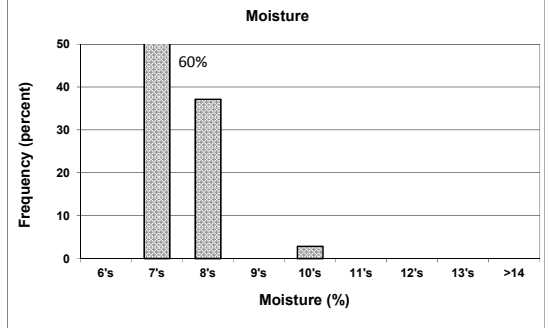
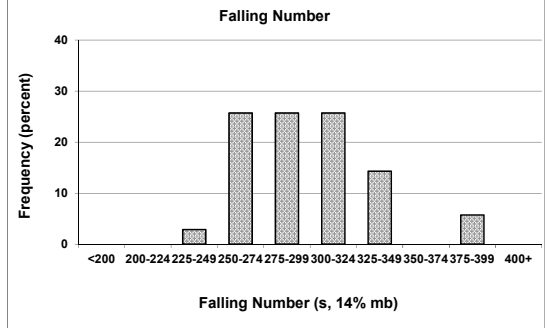
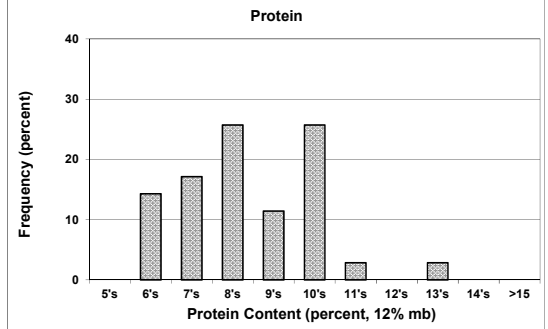
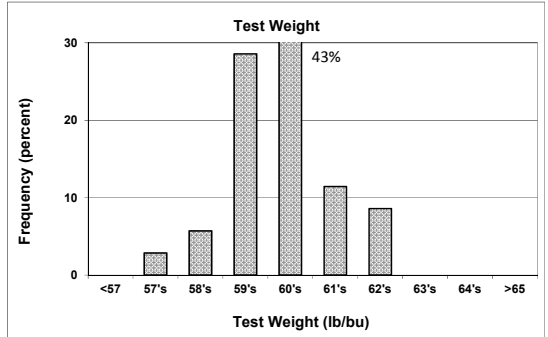
SOFT WHITE WHEAT

170 SAMPLES



WHITE CLUB WHEAT

35 SAMPLES



Prepared by: Wheat Marketing Center, Portland, Oregon