



2018 PACIFIC NORTHWEST CROP QUALITY REPORT

WEEK 2: August 9, 2018

By the end of the second week reporting period for the 2018 Pacific Northwest wheat harvest, we received a total of 104 samples.

Of the 35 wheat samples we received in the second week, 29 were soft white (SWH), 3 were white club (WHCB), and 3 were hard red winter (HRW). Fifteen samples (43%) came from District 4 (North Central Oregon), 8 (23%) each came from District 5 (Northeastern Oregon) and District 10 (Southeastern Washington), and 4 (11%) came from Districts 1&2 (Western Oregon).

USDA Economic Statistics Districts (Table 1) showed the following: Test weights for SWH ranged from 60.8 to 62.4 lb/bu (80.0 to 82.0 kg/hl). Dockage ranged from 0.2 to 0.4%. Wheat moisture content ranged from 8.1 to 10.7%. Average SWH wheat protein content (12% mb) decreased to 9.3% from 9.4% last week. SWH falling number average value (14% mb) was 308 seconds. Thousand kernel weight (14% mb) and kernel size indicated lighter and the same size kernels when compared to last year averages, respectively. With limited number of samples, average WHCB test weight was the same at 60.2 lb/bu when compared to last year. Average moisture content was lower so far this year at 8.0% compared with 8.3% last year. Average WHCB wheat protein (12% mb) was higher at 10.2% than last year at 9.4%. WHCB falling number value was 311 seconds. With limited number of HRW samples, average indicated higher test weight, lower kernel moisture, lower protein content, lower falling number value, and similar kernel characteristics when compared to last year. No new HRS sample was received for this week.

We will continue to report the six PNW Production Zones (Table 2): Northwest (NW), Southwest (SW), North Central (NC), Central (C), Northeast (NE), and Southeast (SE). The Zones are based on country elevator locations and climatic conditions. This week samples came from Zones C (66%), NE (23%), and SW (11%).

Although the average SWH protein (12% mb) was 9.3% at the end of second week, it is still too early to determine this year's average protein, especially we have not received samples from all areas of PNW.



BY USDA ECONOMIC STATISTICS DISTRICTS

Table 1

2018 CROP WEEK 2, August 9, 2018																				
Class	District	Number of Samples	Grading Data									Quality Data								
			Test Weight (lb/bu)	Test Weight (kg/hl)	Dockage (%)	Heat Damage (%)	Total Damage (%)	Foreign Material (%)	Shrunk & Broken (%)	Total Defects (%)	Moisture (%)	Protein (% 12% mb)			Falling Number (s. 14%mb)	Thousand Kernel Weight (g. 14% mb)	Kernel Hardness (20 to 120)	Kernel Size (mm)	Ash (% 14% mb)	Wet Gluten (% 14% mb)
												Average	Low	High						
SWH	1\2	6	62.4	82.0	0.4	0.0	0.0	0.0	0.4	0.4	10.7	8.4	7.5	9.4	311	41.3	20.2	2.87	1.36	18.5
SWH	4	19	60.8	80.0	0.4	0.0	0.0	0.1	0.6	0.8	8.4	9.4	7.4	12.9	323	33.1	27.4	2.70	1.35	22.6
SWH	5	10	61.7	81.2	0.3	0.0	0.1	0.1	0.6	0.7	8.0	9.1	8.1	11.4	308	36.4	26.5	2.78	1.35	20.0
SWH	6\7	2	61.6	80.9	0.2	0.0	0.2	0.0	0.4	0.6	8.6	11.1	10.4	11.7	334	32.9	28.6	2.68	1.28	26.5
SWH	8	11	61.5	80.9	0.2	0.0	0.1	0.0	0.7	0.8	8.5	9.6	7.9	12.2	292	31.6	26.0	2.67	1.33	22.0
SWH	10	20	62.4	82.0	0.3	0.0	0.0	0.0	0.3	0.4	8.1	9.1	8.1	10.3	298	34.7	28.4	2.79	1.32	20.0
	Crop Year Average																			
SWH	2018	68	61.7	81.1	0.3	0.0	0.1	0.0	0.5	0.6	8.5	9.3			308	34.5	26.7	2.75	1.34	21.1
SWH	2017	512	60.9	80.0	0.5	0.0	0.0	0.1	0.5	0.6	8.9	9.6			335	35.5	30.1	2.75	1.32	20.2
WHCB	4	1	60.1	79.1	1.3	0.0	0.0	0.2	1.1	1.3	10.6	10.1	10.1	10.1	334	29.5	27.4	2.58	1.25	20.7
WHCB	5	1	59.6	78.4	0.8	0.0	0.5	0.1	1.7	2.3	7.6	8.6	8.6	8.6	276	29.8	28.8	2.55	1.19	17.4
WHCB	6\7	3	59.4	78.2	0.4	0.0	0.0	0.0	1.3	1.4	7.6	11.4	10.2	13.6	301	28.9	27.6	2.50	1.44	23.3
WHCB	8	2	60.4	79.5	0.6	0.0	0.0	0.0	0.8	0.8	7.5	9.1	7.5	10.7	280	32.4	26.3	2.62	1.29	19.6
WHCB	10	2	61.4	80.7	0.7	0.0	0.1	0.0	1.5	1.5	8.1	10.4	10.0	10.7	363	26.2	38.9	2.51	1.41	21.2
	Crop Year Average																			
WHCB	2018	9	60.2	79.2	0.6	0.0	0.1	0.0	1.2	1.4	8.0	10.2			311	29.2	29.9	2.54	1.35	21.1
WHCB	2017	96	60.2	79.2	0.5	0.0	0.0	0.0	1.0	1.1	8.3	9.4			348	32.5	30.6	2.56	1.27	17.1
HRW	4	1	58.8	77.4	2.9	0.0	0.0	0.1	0.4	0.5	8.0	12.8	12.8	12.8	389	24.0	74.0	2.46	1.38	29.6
HRW	6\7	4	62.9	82.7	0.2	0.0	0.1	0.0	0.5	0.5	9.4	10.7	9.3	12.1	312	33.3	70.5	2.78	1.43	20.9
HRW	8	10	63.1	83.0	0.3	0.0	0.0	0.0	0.4	0.5	8.7	11.5	10.1	13.0	333	34.9	71.0	2.85	1.44	28.9
HRW	10	5	63.1	82.9	0.1	0.0	0.0	0.0	0.2	0.2	8.0	10.3	9.4	10.7	337	35.5	65.1	2.88	1.25	22.5
	Crop Year Average																			
HRW	2018	20	62.9	82.6	0.3	0.0	0.0	0.0	0.4	0.4	8.7	11.1			333	34.2	69.6	2.83	1.39	25.7
HRW	2017	93	62.4	82.0	0.4	0.0	0.0	0.0	0.5	0.5	8.4	11.5			387	35.3	69.7	2.82	1.34	24.8
HRS	6\7	3	64.7	85.0	0.2	0.0	0.0	0.0	0.2	0.2	8.9	14.2	13.1	15.0	332	36.1	65.9	2.93	1.61	38.6
HRS	8	4	63.3	83.2	0.2	0.0	0.2	0.0	0.4	0.6	9.1	13.8	12.0	15.4	355	35.0	68.9	2.84	1.62	31.7
	Crop Year Average																			
HRS	2018	7	63.9	84.0	0.2	0.0	0.1	0.0	0.3	0.4	9.0	13.9			345	35.4	67.6	2.88	1.62	34.7
HRS	2017	74	62.2	81.7	0.4	0.0	0.1	0.0	0.8	0.9	9.1	14.6			384	33.0	72.3	2.81	1.52	35.4



BY PRODUCTION ZONES

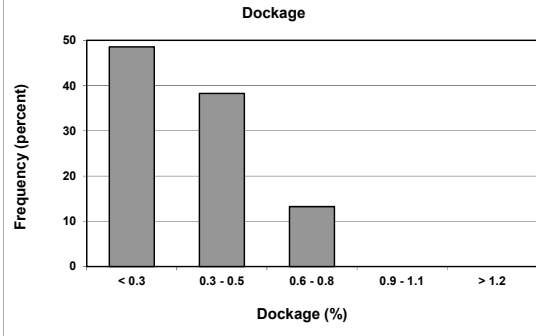
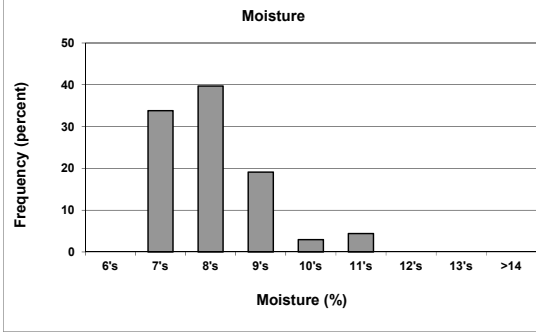
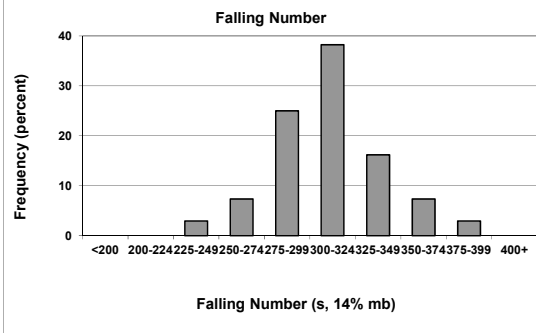
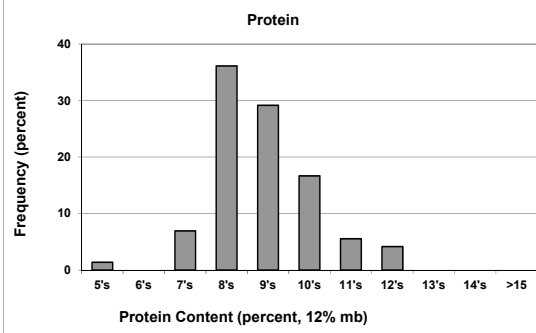
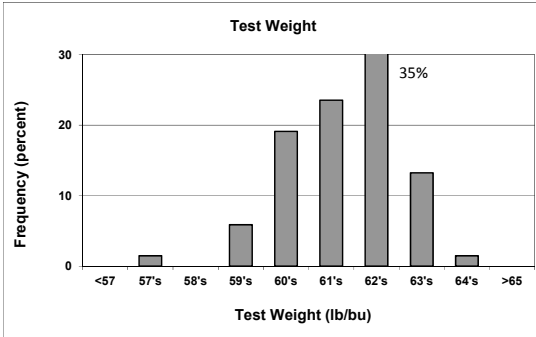
Table 2

2018 CROP WEEK 2, August 9, 2018																				
Class	District	Number of Samples	Grading Data									Quality Data								
			Test Weight (lb/bu)	Test Weight (kg/ht)	Dockage (%)	Heat Damage (%)	Total Damage (%)	Foreign Material (%)	Shrunk & Broken (%)	Total Defects (%)	Moisture (%)	Protein (% 12% mb)			Falling Number (s, 14%mb)	Thousand Kernel Weight (g, 14% mb)	Kernel Hardness (-20 to 120)	Kernel Size (mm)	Ash (% 14% mb)	Wet Gluten (% 14% mb)
												Average	Low	High						
SWH	NC	26	62.0	81.6	0.3	0.0	0.1	0.0	0.5	0.6	8.3	9.4	7.9	12.2	296	32.9	26.3	2.74	1.33	21.0
SWH	NE	5	62.4	82.1	0.3	0.0	0.0	0.0	0.1	0.1	8.1	8.9	8.1	9.3	307	36.9	33.8	2.81	1.30	19.6
SWH	C	31	61.2	80.4	0.3	0.0	0.1	0.1	0.6	0.7	8.3	9.4	7.4	12.9	318	34.2	27.2	2.73	1.34	22.0
SWH	SW	6	62.4	82.0	0.4	0.0	0.0	0.0	0.4	0.4	10.7	8.4	7.5	9.4	311	41.3	20.2	2.87	1.36	18.5
	Crop Year Average																			
SWH	2018	68	61.7	81.1	0.3	0.0	0.1	0.0	0.5	0.6	8.5	9.3			308	34.5	26.7	2.75	1.34	21.1
SWH	2017	512	60.9	80.0	0.5	0.0	0.0	0.1	0.5	0.6	8.9	9.6			335	35.5	30.1	2.75	1.32	20.2
WHCB	NC	6	60.2	79.2	0.5	0.0	0.0	0.0	1.3	1.3	7.7	10.5	7.5	13.6	303	29.3	29.1	2.54	1.38	21.6
WHCB	NE	1	60.8	80.0	0.9	0.0	0.0	0.0	0.7	0.7	7.9	10.0	10.0	10.0	347	28.0	38.6	2.53	1.43	22.0
WHCB	C	2	59.9	78.7	1.1	0.0	0.3	0.2	1.4	1.8	9.1	9.4	8.6	10.1	302	29.6	28.1	2.56	1.22	19.0
	Crop Year Average																			
WHCB	2018	9	60.2	79.2	0.6	0.0	0.1	0.0	1.2	1.4	8.0	10.2			311	29.2	29.9	2.54	1.35	21.1
WHCB	2017	96	60.2	79.2	0.5	0.0	0.0	0.0	1.0	1.1	8.3	9.4			348	32.5	30.6	2.56	1.27	17.1
HRW	NC	14	63.0	82.8	0.2	0.0	0.0	0.0	0.4	0.4	8.7	11.2	9.9	13.0	335	35.5	69.0	2.89	1.41	26.8
HRW	NE	2	64.0	84.0	0.1	0.0	0.0	0.0	0.2	0.2	7.2	10.1	9.4	10.7	329	34.0	68.9	2.82	1.25	22.1
HRW	C	4	61.9	81.3	0.9	0.0	0.0	0.0	0.5	0.5	9.2	11.4	9.3	12.8	322	29.7	72.0	2.61	1.37	23.8
	Crop Year Average																			
HRW	2018	20	62.9	82.6	0.3	0.0	0.0	0.0	0.4	0.4	8.7	11.1			333	34.2	69.6	2.83	1.39	25.7
HRW	2017	93	62.4	82.0	0.4	0.0	0.0	0.0	0.5	0.5	8.4	11.5			387	35.3	69.7	2.82	1.34	24.8
HRS	NC	7	63.9	84.0	0.2	0.0	0.1	0.0	0.3	0.4	9.0	13.9	12.0	15.4	345	35.4	67.6	2.88	1.62	34.7
	Crop Year Average																			
HRS	2018	7	63.9	84.0	0.2	0.0	0.1	0.0	0.3	0.4	9.0	13.9			345	35.4	67.6	2.88	1.62	34.7
HRS	2017	74	62.2	81.7	0.4	0.0	0.1	0.0	0.8	0.9	9.1	14.6			384	33.0	72.3	2.81	1.52	35.4

Distributions

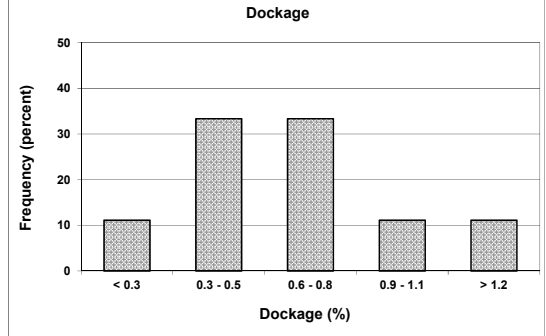
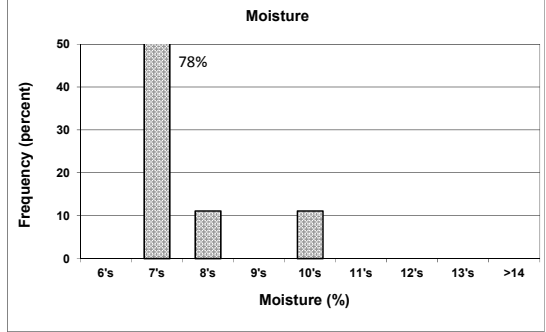
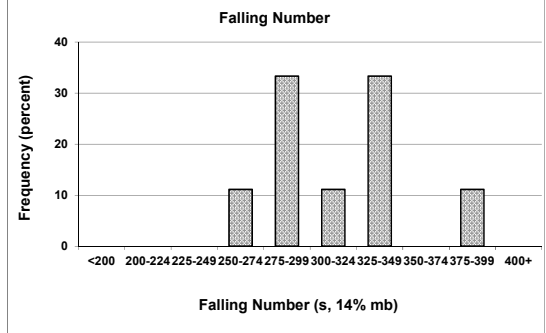
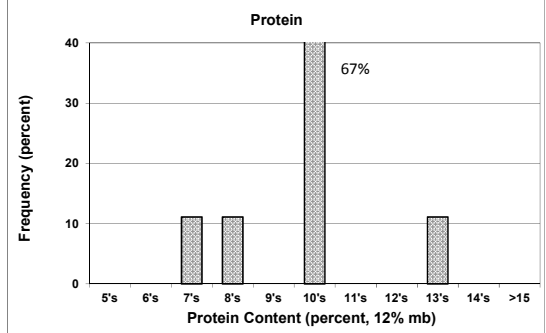
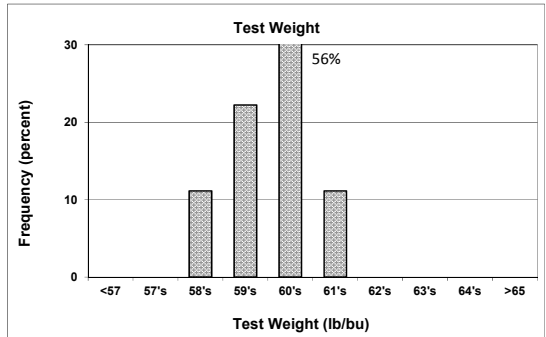
SOFT WHITE WHEAT

68 SAMPLES



WHITE CLUB WHEAT

9 SAMPLE



Prepared by: Wheat Marketing Center, Portland, Oregon