



2017 PACIFIC NORTHWEST CROP QUALITY REPORT

WEEK 6: August 31, 2017

We received and tested 734 samples by the end of sixth week for the Pacific Northwest 2017 wheat harvest.

Of the 73 wheat samples tested for this week, 34 were soft white (SWH), 17 were white club (WHCB), 5 were hard red winter (HRW), 8 were hard red spring (HRS), and 9 were hard white (HDWH). Twenty-two samples (30%) came from District 8 (East Central Washington), 21 (29%) were from District 10 (Southeastern Washington), 20 (27%) were from District 14 (Southeastern Idaho), and 10 (14%) were from District 11 (Northern Idaho).

USDA Economic Statistics Districts (Table 1) data remained similar to last week as follows:

Test weights for SWH ranged from 59.6 to 61.8 lb/bu with weighted average at 60.0 lb/bu (80.0 kg/hl). SWH dockage ranged from 0.3 to 0.8%. Wheat moisture contents ranged from 9.0 to 11.3% with weighted average at 8.9%. Average SWH wheat protein content (12% mb) was 9.6% and the range is from 8.4 to 9.9%. SWH falling number average value (14% mb) was 335 seconds. WHCB, HRW, and HRS data stayed similar to last week.

We continue to report the six PNW Production Zones (Table 2): Northwest (NW), Southwest (SW), North Central (NC), Central (C), Northeast (NE), and Southeast (SE). The Zones are based on country elevator locations and climatic conditions. This week samples came from Zone NE (42%), Zone NC (30%), and Zone SE (27%).

The SWH average protein (12% mb) was the highest for Zone NC at 9.8% followed by Zones C and SE at 9.6%; the lowest was in Zone SW at 8.4%. The WHCB average protein (12% mb) was the highest at 10.2% for Zone C and lower at 9.6% and 9.1% for Zone NC and NE, respectively.



BY USDA ECONOMIC STATISTICS DISTRICTS

Table 1

2017 CROP WEEK 6, August 31, 2017

			Grading Data									Quality Data								
Class	District	Number of Samples	Test Weight (lb/bu)	Test Weight (kg/hl)	Dockage (%)	Heat Damage (%)	Total Damage (%)	Foreign Material (%)	Shrunk & Broken (%)	Total Defects (%)	Moisture (%)	Protein (% 12% mb)			Falling Number (s, 14%mb)	Thousand Kernel Weight (g, 14% mb)	Kernel Hardness (>20 to 120)	Kernel Size (mm)	Ash (% 14% mb)	Wet Gluten (% 14% mb)
												Average	Low	High						
SWH	1/2	31	59.6	78.4	0.6	0.0	0.0	0.1	0.6	0.7	10.3	8.4	6.9	10.1	354	37.2	25.3	2.80	1.32	16.5
SWH	4	129	60.1	79.1	0.5	0.0	0.0	0.0	0.4	0.5	9.0	9.7	6.7	15.1	317	34.2	31.5	2.74	1.28	21.3
SWH	5	29	61.0	80.2	0.4	0.0	0.0	0.5	0.5	1.0	8.3	9.0	7.1	13.3	320	36.7	35.7	2.81	1.32	16.4
SWH	6/7	13	61.0	80.3	0.3	0.0	0.0	0.1	0.5	0.6	9.0	9.7	8.0	12.8	326	35.9	24.8	2.72	1.31	17.9
SWH	8	71	61.0	79.1	0.4	0.0	0.0	0.0	0.6	0.7	8.4	9.9	7.5	13.3	354	34.6	31.7	2.68	1.27	20.5
SWH	9	4	60.9	80.1	0.7	0.0	0.0	0.0	0.9	0.9	8.5	8.9	8.0	9.2	310	35.2	26.8	2.68	1.26	17.7
SWH	10	94	62.3	81.9	0.4	0.0	0.0	0.0	0.4	0.5	8.4	9.6	7.9	11.1	341	36.7	32.6	2.79	1.28	20.8
SWH	11	40	61.8	81.3	0.5	0.0	0.0	0.0	0.5	0.5	8.4	9.6	7.6	11.4	352	34.9	26.5	2.76	1.40	20.8
SWH	12	10	60.9	80.2	0.8	0.0	0.0	0.0	0.2	0.2	10.0	8.9	8.0	10.4	326	46.3	25.8	3.03	1.51	17.2
SWH	13	12	61.5	80.9	0.3	0.0	0.0	0.0	0.5	0.5	9.3	9.6	7.9	11.2	314	40.7	27.9	2.90	1.45	19.1
SWH	14	38	60.5	79.6	0.7	0.0	0.0	0.0	0.5	0.6	9.8	9.9	8.0	12.9	342	36.5	28.9	2.80	1.49	20.2
	Crop Year Average																			
SWH	2017	471	61.0	80.0	0.5	0.0	0.0	0.1	0.5	0.6	8.9	9.6			335	35.8	30.5	2.76	1.32	20.1
SWH	2016	402	60.8	80.0	0.6	0.0	0.1	0.0	0.6	0.6	9.8	10.1			314	36.3	31.1	2.75	1.28	22.1
WHCB	4	2	63.6	83.5	0.3	0.0	0.0	0.0	0.4	0.4	8.3	10.2	9.9	10.4	357	31.0	44.2	2.72	1.18	21.2
WHCB	6/7	3	57.6	75.9	0.6	0.0	0.0	0.4	1.8	2.1	8.2	8.4	7.0	9.5	333	31.4	22.7	2.48	1.38	15.0
WHCB	8	59	60.1	79.1	0.5	0.0	0.0	0.0	1.0	1.0	8.2	9.6	6.7	13.2	345	33.7	29.8	2.56	1.23	17.6
WHCB	10	8	61.4	80.8	0.7	0.0	0.0	0.0	1.1	1.1	8.6	9.1	8.0	10.8	381	31.0	37.4	2.63	1.26	15.4
WHCB	11	11	60.0	78.9	0.6	0.0	0.0	0.1	1.5	1.6	8.3	9.3	8.8	10.1	342	28.9	36.8	2.55	1.39	17.0
	Crop Year Average																			
WHCB	2017	83	60.2	79.2	0.6	0.0	0.0	0.0	1.1	1.1	8.3	9.5			348	32.7	31.5	2.56	1.26	17.3
WHCB	2016	66	60.8	79.9	0.8	0.0	0.0	0.0	0.8	0.9	9.6	9.9			301	33.7	34.5	2.57	1.18	19.4
HRW	4	14	61.7	81.2	0.3	0.0	0.1	0.0	0.7	0.8	8.1	11.8	10.4	14.3	385	33.7	71.8	2.78	1.20	26.3
HRW	5	12	61.8	81.2	0.4	0.0	0.0	0.0	0.3	0.4	8.7	12.9	11.4	14.4	383	37.3	70.0	2.94	1.46	28.3
HRW	6/7	7	62.3	81.9	0.5	0.0	0.0	0.0	0.5	0.5	8.7	11.9	11.1	14.0	410	34.0	72.6	2.75	1.27	26.9
HRW	8	16	62.8	82.6	0.3	0.0	0.0	0.0	0.5	0.5	8.7	12.0	10.9	12.9	412	36.0	66.7	2.83	1.35	26.9
HRW	10	18	63.2	83.1	0.4	0.0	0.0	0.0	0.4	0.4	8.1	10.7	7.6	12.9	385	36.8	68.1	2.83	1.28	21.6
HRW	11	16	62.8	82.6	0.2	0.0	0.0	0.0	0.5	0.5	8.1	10.6	8.5	12.1	386	35.3	69.0	2.83	1.37	23.0
HRW	13	6	61.2	80.5	0.4	0.0	0.0	0.0	0.7	0.7	8.9	11.9	10.8	12.8	375	33.5	72.9	2.77	1.53	21.4
HRW	14	3	61.8	81.3	1.0	0.0	0.0	0.0	0.7	0.7	8.9	10.7	8.3	13.2	331	30.0	75.1	2.67	1.49	22.6
	Crop Year Average																			
HRW	2017	92	62.4	82.1	0.4	0.0	0.0	0.0	0.5	0.5	8.4	11.5			389	35.3	69.7	2.82	1.34	24.8
HRW	2016	69	61.8	81.3	0.6	0.0	0.0	0.0	0.7	0.7	9.1	11.4			366	34.5	68.8	2.78	1.38	24.1
HRS	4	14	62.3	81.9	0.2	0.0	0.1	0.0	0.3	0.4	8.9	14.5	13.6	16.0	368	33.3	73.5	2.86	1.47	37.8
HRS	5	1	62.3	81.9	0.2	0.0	0.0	0.0	0.9	0.9	8.3	13.5	13.5	13.5	434	37.2	70.1	2.93	1.78	34.1
HRS	6/7	3	64.3	84.5	0.3	0.0	0.0	0.0	0.1	0.1	9.6	15.5	15.0	15.8	383	40.6	56.1	3.07	1.48	36.0
HRS	8	15	62.0	81.5	0.3	0.0	0.0	0.0	0.6	0.6	8.8	15.5	12.4	17.3	405	35.4	67.9	2.90	1.59	40.9
HRS	9	1	64.1	84.2	0.2	0.0	0.0	0.0	0.5	0.5	8.6	12.5	12.5	12.5	365	39.7	60.8	2.88	1.20	27.8
HRS	10	10	63.1	82.9	0.4	0.0	0.0	0.0	1.2	1.2	8.5	14.0	12.0	15.3	396	33.0	73.5	2.75	1.42	33.8
HRS	11	10	59.9	78.8	0.8	0.0	0.2	0.1	2.2	2.5	9.1	14.7	12.5	16.3	437	26.0	78.7	2.55	1.57	30.5
HRS	12	1	62.9	82.7	0.5	0.0	0.0	0.0	0.4	0.4	8.3	13.6	13.6	13.6	359	32.6	71.9	2.87	1.55	35.7
HRS	13	2	61.7	81.1	0.6	0.0	0.0	0.0	0.3	0.3	8.4	14.2	12.9	15.5	394	28.7	78.1	2.71	1.59	34.0
HRS	14	12	62.9	82.7	0.5	0.0	0.0	0.0	0.3	0.4	10.2	14.9	14.0	16.3	387	35.6	75.5	2.92	1.57	35.0
	Crop Year Average																			
HRS	2017	69	62.2	81.8	0.4	0.0	0.1	0.0	0.8	0.8	9.1	14.7			396	33.4	72.5	2.82	1.53	36.0
HRS	2016	61	62.3	81.9	0.5	0.0	0.0	0.0	0.7	0.8	9.0	14.1			369	32.7	74.5	2.76	1.46	32.7



BY PRODUCTION ZONES

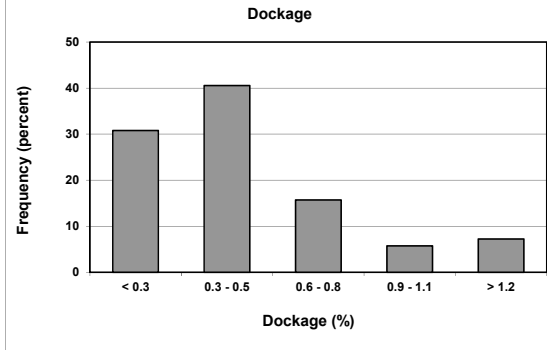
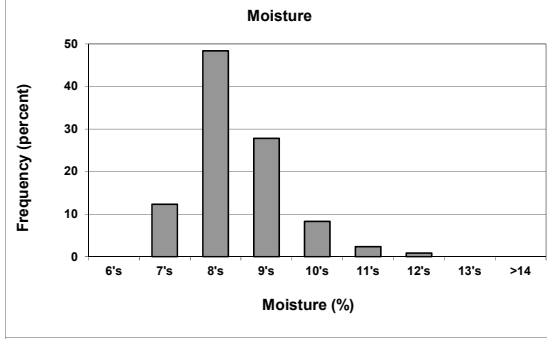
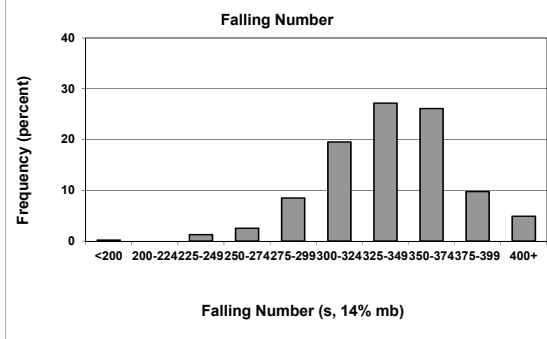
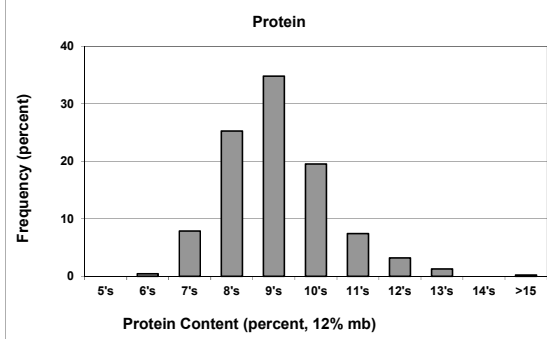
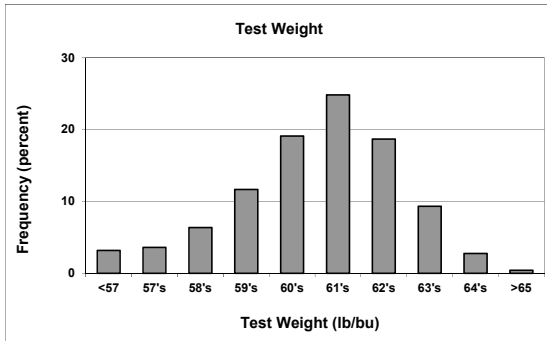
Table 2

2017 CROP WEEK 6, August 31, 2017																				
Class	District	Number of Samples	Grading Data									Quality Data								
			Test Weight (lb/bu)	Test Weight (kg/ht)	Dockage (%)	Heat Damage (%)	Total Damage (%)	Foreign Material (%)	Shrunk & Broken (%)	Total Defects (%)	Moisture (%)	Protein (% 12% mb)			Falling Number (s, 14%mb)	Thousand Kernel Weight (g, 14% mb)	Kernel Hardness (-20 to 120)	Kernel Size (mm)	Ash (% 14% mb)	Wet Gluten (% 14% mb)
												Average	Low	High						
SWH	NC	91	61.2	79.7	0.4	0.0	0.0	0.0	0.6	0.6	8.4	9.8	7.5	13.3	353	35.2	31.2	2.70	1.27	20.5
SWH	NE	114	62.1	81.6	0.5	0.0	0.0	0.0	0.5	0.5	8.4	9.5	7.6	11.4	345	35.8	30.5	2.77	1.33	20.5
SWH	C	175	60.4	79.5	0.5	0.0	0.0	0.1	0.5	0.6	8.8	9.6	6.7	15.1	319	34.9	31.9	2.75	1.29	20.4
SWH	SW	31	59.6	78.4	0.6	0.0	0.0	0.1	0.6	0.7	10.3	8.4	6.9	10.1	354	37.2	25.3	2.80	1.32	16.5
SWH	SE	60	60.8	80.0	0.6	0.0	0.0	0.0	0.5	0.5	9.7	9.6	7.9	12.9	333	39.0	28.2	2.86	1.48	19.5
	Crop Year Average																			
SWH	2017	471	61.0	80.0	0.5	0.0	0.0	0.1	0.5	0.6	8.9	9.6			335	35.8	30.5	2.76	1.32	20.1
SWH	2016	402	60.8	80.0	0.6	0.0	0.1	0.0	0.6	0.6	9.8	10.1			314	36.3	31.1	2.75	1.28	22.1
WHCB	NC	63	60.1	79.1	0.6	0.0	0.0	0.0	1.1	1.1	8.2	9.6	6.7	13.2	347	33.5	30.2	2.55	1.24	17.6
WHCB	NE	17	60.5	79.6	0.6	0.0	0.0	0.1	1.2	1.3	8.5	9.1	8.0	10.1	349	29.8	35.7	2.58	1.34	16.4
WHCB	C	2	63.6	83.5	0.3	0.0	0.0	0.0	0.4	0.4	8.3	10.2	9.9	10.4	357	31.0	44.2	2.72	1.18	21.2
	Crop Year Average																			
WHCB	2017	83	60.2	79.2	0.6	0.0	0.0	0.0	1.1	1.1	8.3	9.5			348	32.7	31.5	2.56	1.26	17.3
WHCB	2016	66	60.8	79.9	0.8	0.0	0.0	0.0	0.8	0.9	9.6	9.9			301	33.7	34.5	2.57	1.18	19.4
HRW	NC	23	62.7	82.4	0.4	0.0	0.0	0.0	0.6	0.6	8.8	12.1	10.9	14.0	408	35.5	68.2	2.81	1.35	26.6
HRW	NE	30	63.1	82.9	0.3	0.0	0.0	0.0	0.4	0.5	8.0	10.5	7.6	12.1	386	36.0	67.9	2.83	1.33	21.9
HRW	C	21	61.7	81.1	0.4	0.0	0.1	0.0	0.6	0.6	8.5	12.4	10.7	14.4	386	35.5	72.5	2.83	1.34	27.6
HRW	SE	9	61.4	80.8	0.6	0.0	0.0	0.0	0.7	0.7	8.9	11.5	8.3	13.2	358	32.3	73.6	2.74	1.52	21.8
	Crop Year Average																			
HRW	2017	92	62.4	82.1	0.4	0.0	0.0	0.0	0.5	0.5	8.4	11.5			389	35.3	69.7	2.82	1.34	24.8
HRW	2016	69	61.8	81.3	0.6	0.0	0.0	0.0	0.7	0.7	9.1	11.4			366	34.5	68.8	2.78	1.38	24.1
HRS	NC	20	62.5	82.1	0.3	0.0	0.0	0.0	0.5	0.5	9.0	15.4	12.4	17.3	396	36.4	66.8	2.92	1.57	40.4
HRS	NE	18	61.3	80.6	0.6	0.0	0.1	0.1	1.5	1.7	8.9	14.3	12.0	16.3	417	29.3	75.6	2.63	1.47	31.9
HRS	C	17	62.5	82.2	0.3	0.0	0.1	0.0	0.6	0.7	8.8	14.5	13.3	16.0	379	33.6	73.1	2.86	1.50	36.2
HRS	SE	15	62.7	82.5	0.5	0.0	0.0	0.0	0.3	0.4	9.8	14.8	12.9	16.3	386	34.5	75.6	2.89	1.57	34.9
	Crop Year Average																			
HRS	2017	69	62.2	81.8	0.4	0.0	0.1	0.0	0.8	0.8	9.1	14.7			396	33.4	72.5	2.82	1.53	36.0
HRS	2016	61	62.3	81.9	0.5	0.0	0.0	0.0	0.7	0.8	9.0	14.1			369	32.7	74.5	2.76	1.46	32.7

Distributions

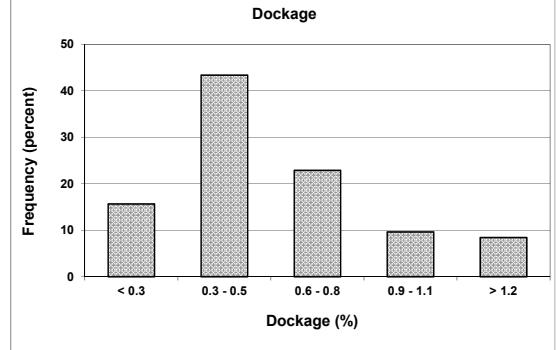
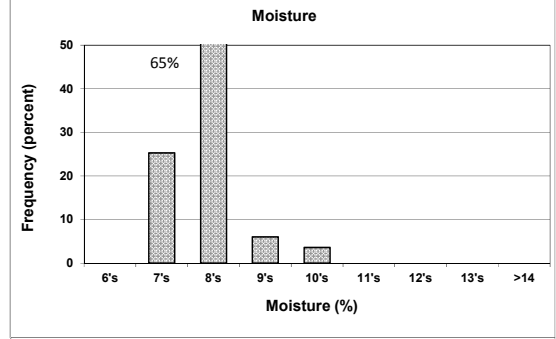
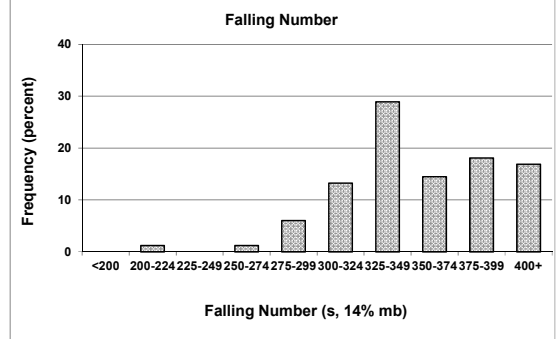
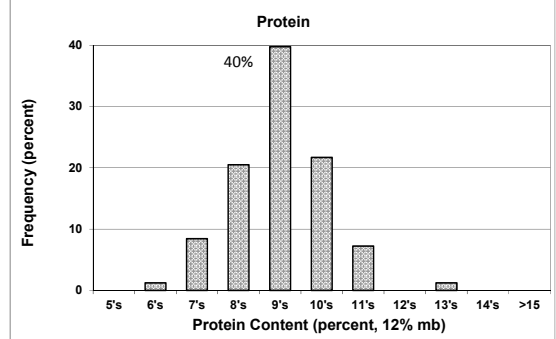
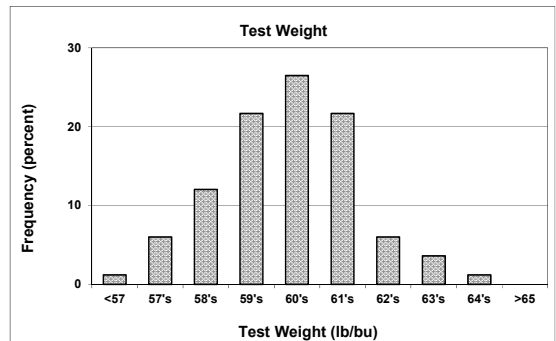
SOFT WHITE WHEAT

471 SAMPLES



WHITE CLUB WHEAT

83 SAMPLES



Prepared by: Wheat Marketing Center, Portland, Oregon