



## **2017 PACIFIC NORTHWEST CROP QUALITY REPORT**

WEEK 5: August 24, 2017

We received and tested 661 samples so far for the Pacific Northwest 2017 wheat harvest.

Of the 212 wheat samples received for the fifth week, 132 were soft white (SWH), 24 were white club (WHCB), 21 were hard red winter (HRW), 26 were hard red spring (HRS), and 9 were hard white (HDWH). Sixty-five samples (31%) came from District 8 (East Central Washington), 43 (20%) were from District 14 (Southeastern Idaho), 36 (17%) were from District 10 (Southeastern Washington), 26 (12%) were from District 11 (Northern Idaho), and less than 10% each were from Districts 13 (South Central Idaho), 4 (North Central Oregon), 12 (Western Oregon), 5 (Northeastern Oregon), 67 (Western Washington), and 12 (Southwestern Idaho).

USDA Economic Statistics Districts (Table 1) showed the following: SWH average test weight was 61.0 lb/bu compared to 60.8 lb/bu last year, average moisture was 8.8% compared to 9.8% last year, average protein (12% mb) was 9.5% compared to 10.1% last year, and average falling number value was 335 seconds compared to 314 seconds last year. Samples had heavy thousand kernel weight and large kernel size. The highest SWH whole meal wet gluten value (14% mb) was shown in District 4 at 21.3% followed by District 10 at 20.9% with 9.7% and 9.5% protein contents (12% mb), respectively. WHCB weighted averages showed 8.3% wheat moisture, 9.5% (12% mb) wheat protein, and 345 seconds (14% mb) falling number value. HRW and HRS weighted averages indicated higher or the same test weight, lower or the same moisture, higher protein content, and higher falling number value when compared to last year.

We continue to report results from the six PNW Production Zones (Table 2): Northwest (NW), Southwest (SW), North Central (NC), Central (C), Northeast (NE), and Southeast (SE). The Zones are based on country elevator locations and climatic conditions. This week samples came from Zones NC (33%), SE (28%), NE (27%), and less than 10% from Zones C and SW. No samples were received from Zone NW.

The SWH average protein (12% mb) was the highest for Zone NC at 9.7% followed by Zone C at 9.6%, and the lowest for Zone SW at 8.4%. The WHCB average protein (12% mb) was the highest at 10.2% for Zone C with two samples, followed by Zone NC at 10.6% with 48 samples.



**BY USDA ECONOMIC STATISTICS DISTRICTS**

**Table 1**

2017 CROP WEEK 5, August 24, 2017

			Grading Data									Quality Data								
Class	District	Number of Samples	Test Weight (lb/bu)	Test Weight (kg/hl)	Dockage (%)	Heat Damage (%)	Total Damage (%)	Foreign Material (%)	Shrunk & Broken (%)	Total Defects (%)	Moisture (%)	Protein (% 12% mb)			Falling Number (s, 14%mb)	Thousand Kernel Weight (g, 14% mb)	Kernel Hardness (>20 to 120)	Kernel Size (mm)	Ash (% 14% mb)	Wet Gluten (% 14% mb)
												Average	Low	High						
SWH	112	31	59.6	78.4	0.6	0.0	0.0	0.1	0.6	0.7	10.3	8.4	6.9	10.1	354	37.2	25.3	2.80	1.32	16.5
SWH	4	129	60.1	79.1	0.5	0.0	0.0	0.0	0.4	0.5	9.0	9.7	6.7	15.1	317	34.2	31.5	2.74	1.28	21.3
SWH	5	29	61.0	80.2	0.4	0.0	0.0	0.5	0.5	1.0	8.3	9.0	7.1	13.3	320	36.7	35.7	2.81	1.32	16.4
SWH	617	13	61.0	80.3	0.3	0.0	0.0	0.1	0.5	0.6	9.0	9.7	8.0	12.8	326	35.9	24.8	2.72	1.31	17.9
SWH	8	64	61.1	80.3	0.3	0.0	0.0	0.0	0.6	0.7	8.4	9.8	7.5	11.9	356	34.5	32.3	2.68	1.25	20.4
SWH	9	4	60.9	80.1	0.7	0.0	0.0	0.0	0.9	0.9	8.5	8.9	8.0	9.2	310	35.2	26.8	2.68	1.26	17.7
SWH	10	78	62.4	82.1	0.4	0.0	0.0	0.0	0.4	0.5	8.4	9.5	7.9	10.9	342	37.0	33.1	2.79	1.26	20.9
SWH	11	40	61.8	81.3	0.5	0.0	0.0	0.0	0.5	0.5	8.4	9.6	7.6	11.4	352	34.9	26.5	2.76	1.40	20.8
SWH	12	10	60.9	80.2	0.8	0.0	0.0	0.0	0.2	0.2	10.0	8.9	8.0	10.4	326	46.3	25.8	3.03	1.51	17.2
SWH	13	12	61.5	80.9	0.3	0.0	0.0	0.0	0.5	0.5	9.3	9.6	7.9	11.2	314	40.7	27.9	2.90	1.45	19.1
SWH	14	27	60.7	79.8	0.6	0.0	0.0	0.0	0.5	0.6	9.5	9.6	8.0	12.9	339	37.5	29.0	2.83	1.48	19.5
	<b>Crop Year Average</b>																			
SWH	<b>2017</b>	437	61.0	80.2	0.5	0.0	0.0	0.1	0.5	0.6	8.8	9.5			335	35.9	30.7	2.77	1.31	20.0
SWH	<b>2016</b>	402	60.8	80.0	0.6	0.0	0.1	0.0	0.6	0.6	9.8	10.1			314	36.3	31.1	2.75	1.28	22.1
WHCB	4	2	63.6	83.5	0.3	0.0	0.0	0.0	0.4	0.4	8.3	10.2	9.9	10.4	357	31.0	44.2	2.72	1.18	21.2
WHCB	617	3	57.6	75.9	0.6	0.0	0.0	0.4	1.8	2.1	8.2	8.4	7.0	9.5	333	31.4	22.7	2.48	1.38	15.0
WHCB	8	44	60.3	79.3	0.5	0.0	0.0	0.0	0.9	1.0	8.2	9.5	6.7	13.2	339	34.3	30.2	2.58	1.20	18.3
WHCB	10	6	61.3	80.6	0.8	0.0	0.0	0.0	1.3	1.3	8.9	9.3	8.0	10.8	402	31.6	37.3	2.62	1.25	16.1
WHCB	11	11	60.0	78.9	0.6	0.0	0.0	0.1	1.5	1.6	8.3	9.3	8.8	10.1	342	28.9	36.8	2.55	1.39	17.0
	<b>Crop Year Average</b>																			
WHCB	<b>2017</b>	66	60.3	79.3	0.6	0.0	0.0	0.1	1.1	1.1	8.3	9.5			345	32.9	32.0	2.58	1.25	17.8
WHCB	<b>2016</b>	66	60.8	79.9	0.8	0.0	0.0	0.0	0.8	0.9	9.6	9.9			301	33.7	34.5	2.57	1.18	19.4
HRW	4	14	61.7	81.2	0.3	0.0	0.1	0.0	0.7	0.8	8.1	11.8	10.4	14.3	385	33.7	71.8	2.78	1.20	26.3
HRW	5	12	61.8	81.2	0.4	0.0	0.0	0.0	0.3	0.4	8.7	12.9	11.4	14.4	383	37.3	70.0	2.94	1.46	28.3
HRW	617	7	62.3	81.9	0.5	0.0	0.0	0.0	0.5	0.5	8.7	11.9	11.1	14.0	410	34.0	72.6	2.75	1.27	26.9
HRW	8	16	62.8	82.6	0.3	0.0	0.0	0.0	0.5	0.5	8.7	12.0	10.9	12.9	412	36.0	66.7	2.83	1.35	26.9
HRW	10	17	63.3	83.2	0.3	0.0	0.0	0.0	0.4	0.4	8.1	10.6	7.6	12.9	383	37.1	68.0	2.84	1.27	21.3
HRW	11	12	62.7	82.4	0.3	0.0	0.1	0.0	0.5	0.5	8.1	10.5	8.5	12.1	388	35.0	69.9	2.81	1.39	23.6
HRW	13	6	61.2	80.5	0.4	0.0	0.0	0.0	0.7	0.7	8.9	11.9	10.8	12.8	375	33.5	72.9	2.77	1.53	21.4
HRW	14	3	61.8	81.3	1.0	0.0	0.0	0.0	0.7	0.7	8.9	10.7	8.3	13.2	331	30.0	75.1	2.67	1.49	22.6
	<b>Crop Year Average</b>																			
HRW	<b>2017</b>	87	62.4	82.0	0.4	0.0	0.0	0.0	0.5	0.5	8.4	11.6			389	35.3	69.9	2.82	1.34	24.9
HRW	<b>2016</b>	69	61.8	81.3	0.6	0.0	0.0	0.0	0.7	0.7	9.1	11.4			366	34.5	68.8	2.78	1.38	24.1
HRS	4	14	62.3	81.9	0.2	0.0	0.1	0.0	0.3	0.4	8.9	14.5	13.6	16.0	368	33.3	73.5	2.86	1.47	37.8
HRS	5	1	62.3	81.9	0.2	0.0	0.0	0.0	0.9	0.9	8.3	13.5	13.5	13.5	434	37.2	70.1	2.93	1.78	34.1
HRS	617	3	64.3	84.5	0.3	0.0	0.0	0.0	0.1	0.1	9.6	15.5	15.0	15.8	383	40.6	56.1	3.07	1.48	36.0
HRS	8	15	62.0	81.5	0.3	0.0	0.0	0.0	0.6	0.6	8.8	15.5	12.4	17.3	405	35.4	67.9	2.90	1.59	40.9
HRS	9	1	64.1	84.2	0.2	0.0	0.0	0.0	0.5	0.5	8.6	12.5	12.5	12.5	365	39.7	60.8	2.88	1.20	27.8
HRS	10	8	63.3	83.2	0.4	0.0	0.0	0.0	1.3	1.3	8.5	13.8	12.0	15.1	385	34.3	73.4	2.78	1.41	33.4
HRS	11	4	58.4	76.9	1.6	0.0	0.0	0.1	3.7	3.8	8.2	14.9	12.5	16.3	390	25.0	79.4	2.54	1.65	26.8
HRS	12	1	62.9	82.7	0.5	0.0	0.0	0.0	0.4	0.4	8.3	13.6	13.6	13.6	359	32.6	71.9	2.87	1.55	35.7
HRS	13	2	61.7	81.1	0.6	0.0	0.0	0.0	0.3	0.3	8.4	14.2	12.9	15.5	394	28.7	78.1	2.71	1.59	34.0
HRS	14	12	62.9	82.7	0.5	0.0	0.0	0.0	0.3	0.4	10.2	14.9	14.0	16.3	387	35.6	75.5	2.92	1.57	35.0
	<b>Crop Year Average</b>																			
HRS	<b>2017</b>	61	62.3	81.9	0.4	0.0	0.0	0.0	0.7	0.8	9.0	14.8			387	34.2	71.9	2.86	1.53	36.3
HRS	<b>2016</b>	61	62.3	81.9	0.5	0.0	0.0	0.0	0.7	0.8	9.0	14.1			369	32.7	74.5	2.76	1.46	32.7



**BY PRODUCTION ZONES**

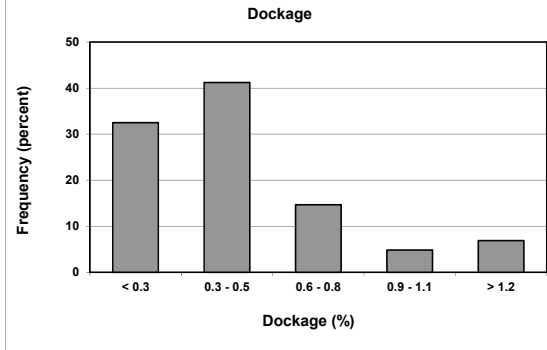
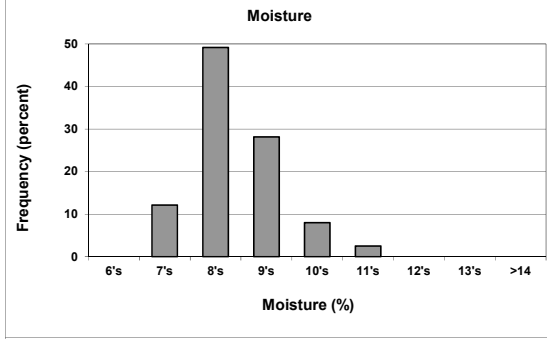
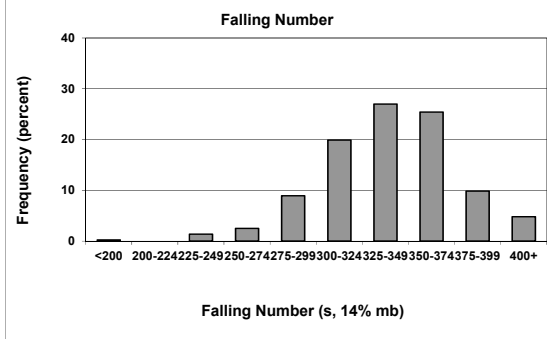
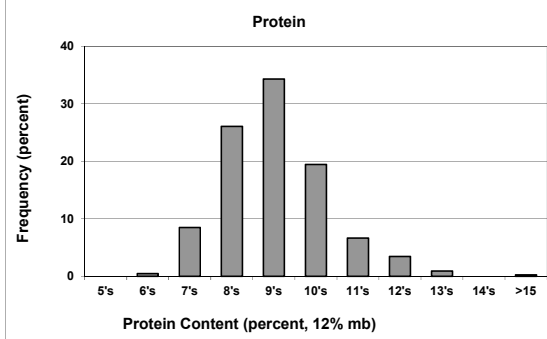
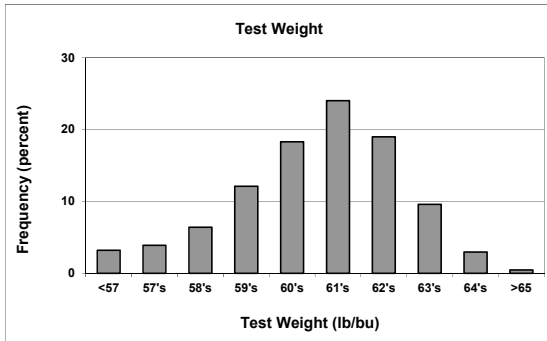
**Table 2**

2017 CROP WEEK 5, August 24, 2017																					
Class	District	Number of Samples	Grading Data								Quality Data										
			Test Weight (lb/bu)	Test Weight (kg/ht)	Dockage (%)	Heat Damage (%)	Total Damage (%)	Foreign Material (%)	Shrunk & Broken (%)	Total Defects (%)	Moisture (%)	Protein (% 12% mb)			Falling Number (s, 14%mb)	Thousand Kernel Weight (g, 14% mb)	Kernel Hardness (-20 to 120)	Kernel Size (mm)	Ash (% 14% mb)	Wet Gluten (% 14% mb)	
												Average	Low	High							
SWH	NC	84	61.3	80.6	0.3	0.0	0.0	0.0	0.0	0.6	0.6	8.4	9.7	7.5	11.9	353	35.1	31.6	2.70	1.26	20.4
SWH	NE	98	62.1	81.7	0.4	0.0	0.0	0.0	0.4	0.5	8.4	9.5	7.6	11.4	346	35.8	30.5	2.77	1.33	20.5	
SWH	C	175	60.4	79.5	0.5	0.0	0.0	0.1	0.5	0.6	8.8	9.6	6.7	15.1	319	34.9	31.9	2.75	1.29	20.4	
SWH	SW	31	59.6	78.4	0.6	0.0	0.0	0.1	0.6	0.7	10.3	8.4	6.9	10.1	354	37.2	25.3	2.80	1.32	16.5	
SWH	SE	49	60.9	80.1	0.6	0.0	0.0	0.0	0.5	0.5	9.5	9.5	7.9	12.9	330	40.0	28.1	2.89	1.48	18.9	
	<b>Crop Year Average</b>																				
SWH	<b>2017</b>	437	61.0	80.2	0.5	0.0	0.0	0.1	0.5	0.6	8.8	9.5			335	35.9	30.7	2.77	1.31	20.0	
SWH	<b>2016</b>	402	60.8	80.0	0.6	0.0	0.1	0.0	0.6	0.6	9.8	10.1			314	36.3	31.1	2.75	1.28	22.1	
WHCB	NC	48	60.3	79.3	0.5	0.0	0.0	0.0	1.0	1.1	8.2	9.6	6.7	13.2	343	34.1	30.7	2.58	1.22	18.3	
WHCB	NE	15	60.3	79.4	0.6	0.0	0.0	0.1	1.3	1.4	8.6	9.2	8.0	10.1	352	29.8	35.4	2.57	1.34	16.8	
WHCB	C	2	63.6	83.5	0.3	0.0	0.0	0.0	0.4	0.4	8.3	10.2	9.9	10.4	357	31.0	44.2	2.72	1.18	21.2	
	<b>Crop Year Average</b>																				
WHCB	<b>2017</b>	66	60.3	79.3	0.6	0.0	0.0	0.1	1.1	1.1	8.3	9.5			345	32.9	32.0	2.58	1.25	17.8	
WHCB	<b>2016</b>	66	60.8	79.9	0.8	0.0	0.0	0.0	0.8	0.9	9.6	9.9			301	33.7	34.5	2.57	1.18	19.4	
HRW	NC	23	62.7	82.4	0.4	0.0	0.0	0.0	0.6	0.6	8.8	12.1	10.9	14.0	408	35.5	68.2	2.81	1.35	26.6	
HRW	NE	25	63.1	82.9	0.3	0.0	0.0	0.0	0.4	0.5	8.0	10.4	7.6	12.1	386	36.1	68.2	2.83	1.33	21.9	
HRW	C	21	61.7	81.1	0.4	0.0	0.1	0.0	0.6	0.6	8.5	12.4	10.7	14.4	386	35.5	72.5	2.83	1.34	27.6	
HRW	SE	9	61.4	80.8	0.6	0.0	0.0	0.0	0.7	0.7	8.9	11.5	8.3	13.2	358	32.3	73.6	2.74	1.52	21.8	
	<b>Crop Year Average</b>																				
HRW	<b>2017</b>	87	62.4	82.0	0.4	0.0	0.0	0.0	0.5	0.5	8.4	11.6			389	35.3	69.9	2.82	1.34	24.9	
HRW	<b>2016</b>	69	61.8	81.3	0.6	0.0	0.0	0.0	0.7	0.7	9.1	11.4			366	34.5	68.8	2.78	1.38	24.1	
HRS	NC	20	62.5	82.1	0.3	0.0	0.0	0.0	0.5	0.5	9.0	15.4	12.4	17.3	396	36.4	66.8	2.92	1.57	40.4	
HRS	NE	10	61.3	80.6	0.8	0.0	0.0	0.0	1.8	1.9	8.4	14.0	12.0	16.3	383	31.2	74.3	2.69	1.45	30.4	
HRS	C	17	62.5	82.2	0.3	0.0	0.1	0.0	0.6	0.7	8.8	14.5	13.3	16.0	379	33.6	73.1	2.86	1.50	36.2	
HRS	SE	15	62.7	82.5	0.5	0.0	0.0	0.0	0.3	0.4	9.8	14.8	12.9	16.3	386	34.5	75.6	2.89	1.57	34.9	
	<b>Crop Year Average</b>																				
HRS	<b>2017</b>	61	62.3	81.9	0.4	0.0	0.0	0.0	0.7	0.8	9.0	14.8			387	34.2	71.9	2.86	1.53	36.3	
HRS	<b>2016</b>	61	62.3	81.9	0.5	0.0	0.0	0.0	0.7	0.8	9.0	14.1			369	32.7	74.5	2.76	1.46	32.7	

# Distributions

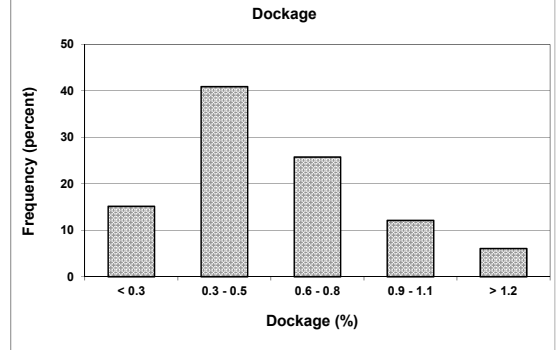
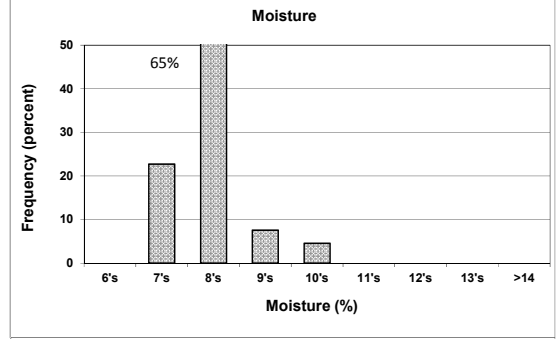
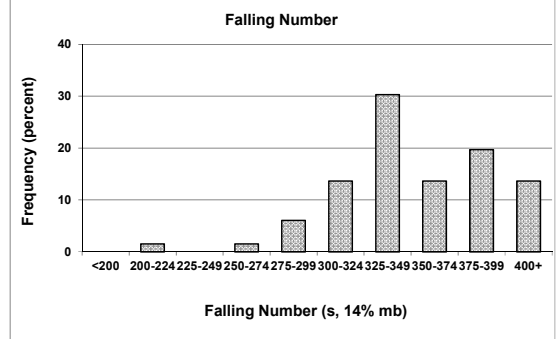
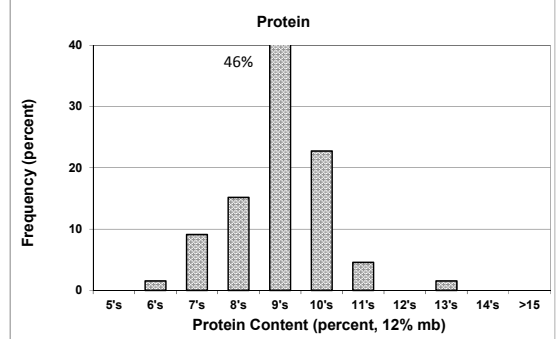
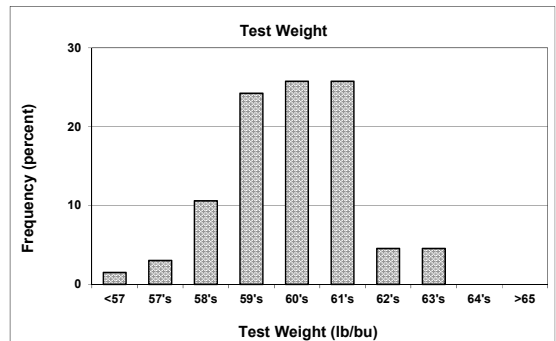
## SOFT WHITE WHEAT

437 SAMPLES



## WHITE CLUB WHEAT

66 SAMPLES



Prepared by: Wheat Marketing Center, Portland, Oregon