



2017 PACIFIC NORTHWEST CROP QUALITY REPORT

WEEK 4: AUGUST 17, 2017

By the end of the fourth week reporting period for the 2017 Pacific Northwest wheat harvest, we received a total of 448 samples.

Of the 158 wheat samples we received in the fourth week, 106 were soft white (SWH), 12 were white club (WHCB), 20 were hard red winter (HRW), and 20 were hard red spring (HRS). Fifty-one samples (32%) came from District 4 (North Central Oregon), 35 (22%) came from District 10 (Southeastern Washington), 26 (16%) came from District 11 (Northern Idaho), 15 (9%) came from District 8 (East Central Washington), 12 (8%) came from Districts 1\2 (Western Oregon), and less than ten samples each came from District 5 (Northeastern Oregon), Districts 6\7 (Western Washington), and District 9 (Northeastern Washington).

USDA Economic Statistics Districts (Table 1) showed the following: Test weight averages for SWH ranged from 59.8 to 62.4 lb/bu, and dockage ranged from 0.3 to 0.8%. Wheat moisture content averages ranged from 8.3 to 10.0%. Average SWH wheat protein content (12% mb) was slightly decreased to 9.5% from 9.6% last week. SWH falling number average value (14% mb) was 328 seconds. Average WHCB test weight is slightly lower than last year at 60.6 lb/bu. Average WHCB wheat protein (12% mb) was lower at 9.7% than 9.9% last year. Average WHCB falling number value (14% mb) was 349 seconds. WHCB had similar thousand kernel weight and kernel size averages as last year. Both HRW and HRS averages indicated a higher test weights, lower moisture values, higher protein contents, sound falling number values, heavier thousand kernel weights, and larger kernel sizes when compared to last year.

We will continue to report the six PNW Production (Table 2): Northwest (NW), Southwest (SW), North Central (NC), Central (C), Northeast (NE), and Southeast (SE). The Zones are based on country elevator locations and climatic conditions. Forty-two percent of this week samples came from Zone C, 38% came from Zone NE, 20% came from Zone NC, and 8% came from Zone SW.

So far SWH had similar test weight, slightly less dockage, similar grading factors, lower moisture, lower protein content, higher falling number, similar thousand kernel weight, and similar kernel size when compared to last year. WHCB had the same trend as SWH when compared to last year.



BY USDA ECONOMIC STATISTICS DISTRICTS

Table 1

2017 CROP WEEK 4, August 17, 2017																				
		Grading Data										Quality Data								
Class	District	Number of Samples	Test Weight (lb/bu)	Test Weight (kg/hl)	Dockage (%)	Heat Damage (%)	Total Damage (%)	Foreign Material (%)	Shrunk & Broken (%)	Total Defects (%)	Moisture (%)	Protein (% 12% mb)			Falling Number (s, 14%mb)	Thousand Kernel Weight (g, 14% mb)	Kernel Hardness (20 to 120)	Kernel Size (mm)	Ash (% 14% mb)	Wet Gluten (% 14% mb)
												Average	Low	High						
SWH	1/2	23	59.8	78.6	0.6	0.0	0.0	0.1	0.6	0.7	10.0	8.5	6.9	10.1	353	37.3	27.5	2.78	1.31	17.1
SWH	4	119	60.2	79.2	0.5	0.0	0.0	0.0	0.4	0.5	9.0	9.8	7.3	15.1	315	34.3	31.6	2.74	1.28	21.4
SWH	5	27	61.0	80.3	0.4	0.0	0.0	0.5	0.6	1.1	8.3	9.0	7.1	13.3	319	36.7	36.1	2.80	1.32	16.3
SWH	6/7	13	61.0	80.3	0.3	0.0	0.0	0.1	0.5	0.6	9.0	9.7	8.0	12.8	326	35.9	24.8	2.72	1.31	17.9
SWH	8	25	61.6	81.0	0.4	0.0	0.1	0.0	0.6	0.7	8.7	9.6	7.6	11.5	344	35.4	32.7	2.67	1.20	19.5
SWH	9	4	60.9	80.1	0.7	0.0	0.0	0.0	0.9	0.9	8.5	8.9	8.0	9.2	310	35.2	26.8	2.68	1.26	17.7
SWH	10	47	62.4	82.1	0.4	0.0	0.0	0.1	0.4	0.5	8.5	9.4	7.9	10.9	337	37.1	32.1	2.78	1.24	20.3
SWH	11	25	62.3	81.9	0.4	0.0	0.0	0.0	0.5	0.5	8.5	9.6	7.6	11.4	357	35.7	27.6	2.77	1.39	19.9
SWH	12	10	60.9	80.2	0.8	0.0	0.0	0.0	0.2	0.2	10.0	8.9	8.0	10.4	326	46.3	25.8	3.03	1.51	17.2
SWH	13	12	61.5	80.9	0.3	0.0	0.0	0.0	0.5	0.5	9.3	9.6	7.9	11.2	314	40.7	27.9	2.90	1.45	19.1
	Crop Year Average																			
SWH	2017	305	61.0	80.2	0.5	0.0	0.0	0.1	0.5	0.6	8.9	9.5			328	36.1	30.8	2.76	1.30	19.7
SWH	2016	402	60.8	80.0	0.6	0.0	0.1	0.0	0.6	0.6	9.8	10.1			314	36.3	31.1	2.75	1.28	22.1
WHCB	4	2	63.6	83.5	0.3	0.0	0.0	0.0	0.4	0.4	8.3	10.2	9.9	10.4	357	31.0	44.2	2.72	1.18	21.2
WHCB	6/7	2	58.3	76.7	0.8	0.0	0.0	0.3	2.0	2.2	8.3	9.2	8.8	9.5	349	32.7	25.0	2.50	1.37	20.1
WHCB	8	29	60.4	79.4	0.6	0.0	0.0	0.0	0.9	1.0	8.4	9.8	7.3	13.2	334	34.8	31.7	2.57	1.21	19.5
WHCB	10	5	61.5	80.9	0.8	0.0	0.0	0.0	1.3	1.3	8.8	9.4	8.0	10.8	418	31.6	39.6	2.63	1.27	15.8
WHCB	11	4	60.8	79.9	0.6	0.0	0.0	0.1	1.2	1.2	8.6	9.4	8.9	10.1	366	28.7	40.5	2.57	1.45	17.8
	Crop Year Average																			
WHCB	2017	42	60.6	79.7	0.6	0.0	0.0	0.1	1.0	1.1	8.4	9.7			349	33.6	33.8	2.58	1.25	19.0
WHCB	2016	66	60.8	79.9	0.8	0.0	0.0	0.0	0.8	0.9	9.6	9.9			301	33.7	34.5	2.57	1.18	19.4
HRW	4	13	61.6	81.1	0.3	0.0	0.1	0.0	0.6	0.8	8.1	11.8	10.4	14.3	381	33.7	72.0	2.77	1.20	26.4
HRW	5	10	61.3	80.7	0.4	0.0	0.0	0.0	0.4	0.4	8.9	13.1	11.4	14.4	383	36.7	71.5	2.91	1.44	28.6
HRW	6/7	7	62.3	81.9	0.5	0.0	0.0	0.0	0.5	0.5	8.7	11.9	11.1	14.0	410	34.0	72.6	2.75	1.27	26.9
HRW	8	14	63.0	82.8	0.3	0.0	0.0	0.0	0.5	0.5	8.8	12.1	10.9	12.9	407	36.8	65.4	2.85	1.37	26.9
HRW	10	14	63.1	82.9	0.3	0.0	0.0	0.0	0.4	0.4	8.2	11.0	9.5	12.9	379	36.8	69.3	2.81	1.26	22.1
HRW	11	8	62.3	81.9	0.3	0.0	0.0	0.0	0.5	0.5	8.2	10.5	8.5	12.1	396	33.6	72.3	2.76	1.43	23.9
	Crop Year Average																			
HRW	2017	66	62.3	82.0	0.4	0.0	0.0	0.0	0.5	0.5	8.5	11.8			391	35.5	70.1	2.81	1.32	25.7
HRW	2016	69	61.8	81.3	0.6	0.0	0.0	0.0	0.7	0.7	9.1	11.4			366	34.5	68.8	2.78	1.38	24.1
HRS	4	14	62.3	81.9	0.2	0.0	0.1	0.0	0.3	0.4	8.9	14.5	13.6	16.0	368	33.3	73.5	2.86	1.47	37.8
HRS	6/7	3	64.3	84.5	0.3	0.0	0.0	0.0	0.1	0.1	9.6	15.5	15.0	15.8	383	40.6	56.1	3.07	1.48	36.0
HRS	8	6	62.4	82.0	0.3	0.0	0.0	0.0	0.2	0.2	9.2	15.6	12.4	17.2	387	39.6	65.2	2.98	1.54	40.3
HRS	9	1	64.1	84.2	0.2	0.0	0.0	0.0	0.5	0.5	8.6	12.5	12.5	12.5	365	39.7	60.8	2.88	1.20	27.8
HRS	10	7	63.5	83.4	0.4	0.0	0.0	0.0	1.3	1.3	8.3	13.7	12.0	15.1	383	34.3	74.4	2.79	1.39	33.4
HRS	11	4	58.4	76.9	1.6	0.0	0.0	0.1	3.7	3.8	8.2	14.9	12.5	16.3	390	25.0	79.4	2.54	1.65	26.8
	Crop Year Average																			
HRS	2017	35	62.3	81.9	0.4	0.0	0.0	0.0	0.8	0.9	8.8	14.6			378	34.4	71.1	2.85	1.48	35.7
HRS	2016	61	62.3	81.9	0.5	0.0	0.0	0.0	0.7	0.8	9.0	14.1			369	32.7	74.5	2.76	1.46	32.7



BY PRODUCTION ZONES

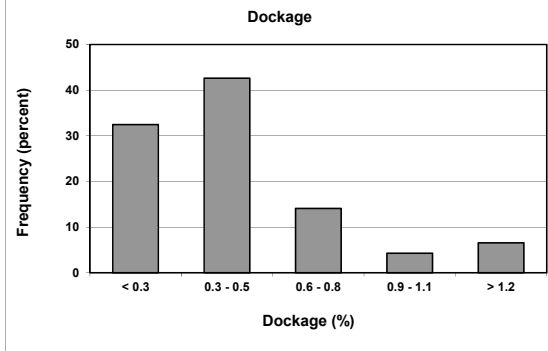
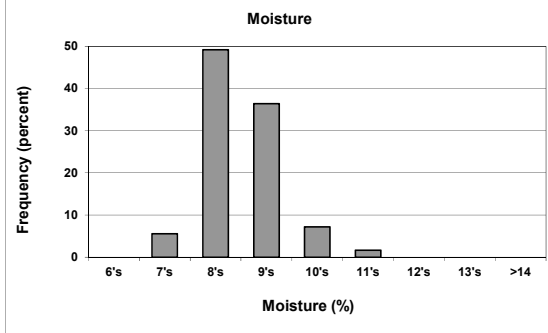
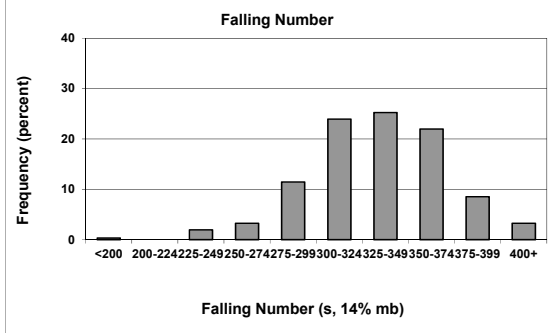
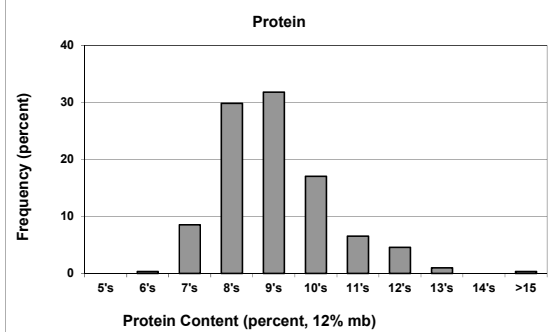
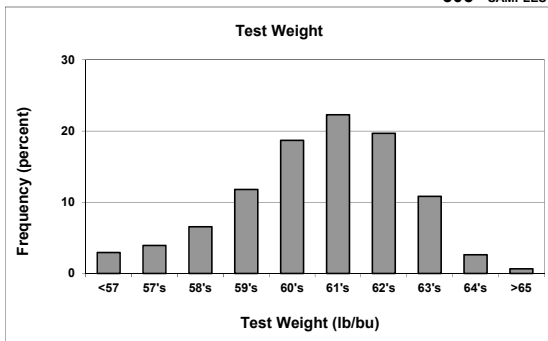
Table 2

2017 CROP WEEK 4, August 17, 2017																					
Class	District	Number of Samples	Grading Data								Quality Data										
			Test Weight (lb/bu)	Test Weight (kg/ht)	Dockage (%)	Heat Damage (%)	Total Damage (%)	Foreign Material (%)	Shrunk & Broken (%)	Total Defects (%)	Moisture (%)	Protein (% 12% mb)			Falling Number (s, 14%mb)	Thousand Kernel Weight (g, 14% mb)	Kernel Hardness (-20 to 120)	Kernel Size (mm)	Ash (% 14% mb)	Wet Gluten (% 14% mb)	
												Average	Low	High							
SWH	NC	41	61.8	81.3	0.3	0.0	0.0	0.0	0.0	0.6	0.6	8.7	9.6	7.6	11.5	341	36.3	31.1	2.71	1.22	19.6
SWH	NE	56	62.3	81.9	0.4	0.0	0.0	0.0	0.4	0.5	8.5	9.4	7.6	11.4	345	35.9	30.0	2.76	1.32	19.6	
SWH	C	163	60.5	79.6	0.5	0.0	0.0	0.1	0.5	0.6	8.9	9.6	7.1	15.1	317	35.0	32.0	2.75	1.28	20.4	
SWH	SW	23	59.8	78.6	0.6	0.0	0.0	0.1	0.6	0.7	10.0	8.5	6.9	10.1	353	37.3	27.5	2.78	1.31	17.1	
SWH	SE	22	61.2	80.5	0.5	0.0	0.0	0.0	0.3	0.4	9.6	9.3	7.9	11.2	319	43.2	27.0	2.96	1.77	18.2	
	Crop Year Average																				
SWH	2017	305	61.0	80.2	0.5	0.0	0.0	0.1	0.5	0.6	8.9	9.5			328	36.1	30.8	2.76	1.30	19.7	
SWH	2016	402	60.8	80.0	0.6	0.0	0.1	0.0	0.6	0.6	9.8	10.1			314	36.3	31.1	2.75	1.28	22.1	
WHCB	NC	33	60.3	79.3	0.6	0.0	0.0	0.1	1.1	1.1	8.3	9.8	7.3	13.2	340	34.4	32.3	2.57	1.23	19.3	
WHCB	NE	7	61.1	80.4	0.6	0.0	0.0	0.1	1.0	1.1	9.0	9.2	8.0	10.1	379	30.3	37.6	2.61	1.36	16.9	
WHCB	C	2	63.6	83.5	0.3	0.0	0.0	0.0	0.4	0.4	8.3	10.2	9.9	10.4	357	31.0	44.2	2.72	1.18	21.2	
	Crop Year Average																				
WHCB	2017	42	60.6	79.7	0.6	0.0	0.0	0.1	1.0	1.1	8.4	9.7			349	33.6	33.8	2.58	1.25	19.0	
WHCB	2016	66	60.8	79.9	0.8	0.0	0.0	0.0	0.8	0.9	9.6	9.9			301	33.7	34.5	2.57	1.18	19.4	
HRW	NC	21	62.8	82.5	0.4	0.0	0.0	0.0	0.5	0.6	8.8	12.1	10.9	14.0	404	36.0	67.4	2.82	1.36	26.5	
HRW	NE	18	62.8	82.6	0.3	0.0	0.0	0.0	0.4	0.4	8.0	10.6	8.5	12.1	386	35.4	69.9	2.79	1.34	22.3	
HRW	C	21	61.7	81.1	0.4	0.0	0.1	0.0	0.6	0.6	8.5	12.4	10.7	14.4	386	35.5	72.5	2.83	1.34	27.6	
	Crop Year Average																				
HRW	2017	66	62.3	82.0	0.4	0.0	0.0	0.0	0.5	0.5	8.5	11.8			391	35.5	70.1	2.81	1.32	25.7	
HRW	2016	69	61.8	81.3	0.6	0.0	0.0	0.0	0.7	0.7	9.1	11.4			366	34.5	68.8	2.78	1.38	24.1	
HRS	NC	11	63.1	82.9	0.3	0.0	0.0	0.0	0.2	0.2	9.3	15.3	12.4	17.2	379	39.5	64.3	2.99	1.53	39.7	
HRS	NE	9	61.2	80.5	0.9	0.0	0.0	0.0	1.9	1.9	8.3	13.9	12.0	16.3	381	30.8	75.2	2.69	1.44	30.1	
HRS	C	16	62.5	82.2	0.3	0.0	0.1	0.0	0.6	0.7	8.9	14.5	13.3	16.0	376	33.3	73.3	2.85	1.48	36.4	
	Crop Year Average																				
HRS	2017	35	62.3	81.9	0.4	0.0	0.0	0.0	0.8	0.9	8.8	14.6			378	34.4	71.1	2.85	1.48	35.7	
HRS	2016	61	62.3	81.9	0.5	0.0	0.0	0.0	0.7	0.8	9.0	14.1			369	32.7	74.5	2.76	1.46	32.7	

Distributions

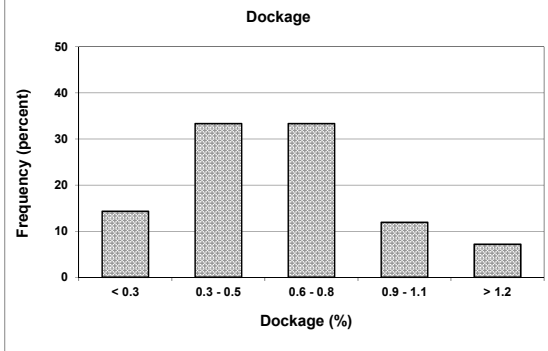
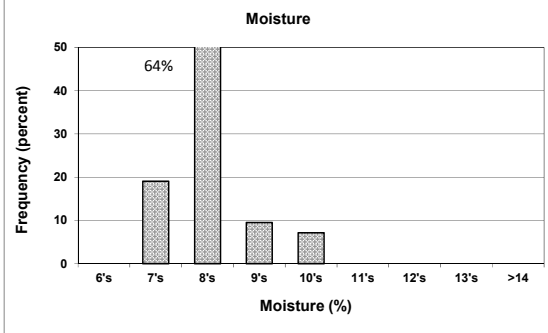
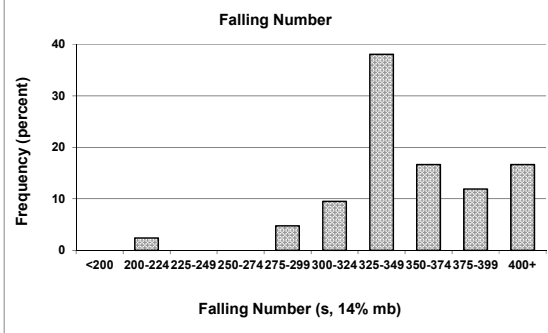
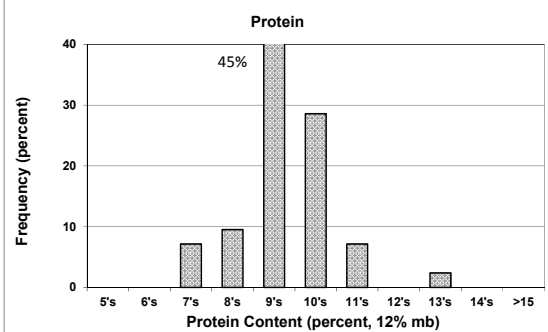
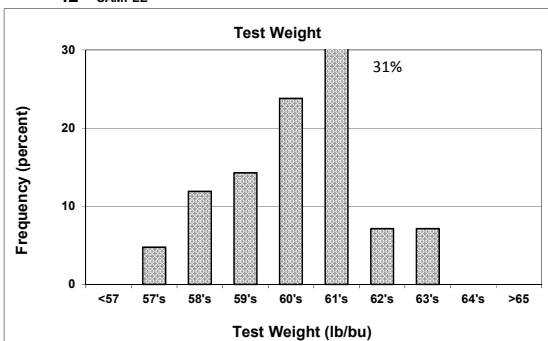
SOFT WHITE WHEAT

305 SAMPLES



WHITE CLUB WHEAT

42 SAMPLE



Prepared by: Wheat Marketing Center, Portland, Oregon