



2017 PACIFIC NORTHWEST CROP QUALITY REPORT

WEEK 3: AUGUST 10, 2017

By the end of the third week reporting period for the 2017 Pacific Northwest wheat harvest, we received a total of 282 samples.

Of the 122 wheat samples we received in the third week, 70 were soft white (SWH), 26 were white club (WHCB), 18 were hard red winter (HRW), and 8 were hard red spring (HRS). Forty-eight samples (39%) came from District 8 (East Central Washington), 29 (24%) came from District 10 (Southeastern Washington), 14 (11%) came from District 4 (North Central Oregon), 11 (9%) came from Districts 1\2 (Western Oregon), and less than 10 each came from Districts 5 (Northeastern Oregon), 6\7 (Western Washington), and 11 (Northern Idaho).

USDA Economic Statistics Districts (Table 1) showed the following: Test weight averages for SWH ranged from 60.3 to 63.4 lb/bu (79.4 to 83.3 kg/hl), and dockage ranged from 0.2 to 0.8%. Wheat moisture content averages ranged from 8.3 to 10.2%. Average SWH wheat protein content (12% mb) remained the same as last week at 9.6% this week. SWH falling number average value (14% mb) was 326 seconds. Thousand kernel weight (14% mb) and kernel size indicated slightly heavier and larger kernels than last year averages, respectively. Average WHCB test weight was slightly lower at 60.7 lb/bu compared with 60.8 lb/bu last year. Average WHCB wheat protein (12% mb) remained the same at 9.9%. Average WHCB falling number value (14% mb) went up to 346 seconds from 308 seconds last week. Both HRW and HRS averages appeared to have higher test weights, higher protein contents, sound falling number values, and heavier and larger kernels when compared to last year.

We will continue to report the six PNW Production Zones (Table 2): Northwest (NW), Southwest (SW), North Central (NC), Central (C), Northeast (NE), and Southeast (SE). The Zones are based on country elevator locations and climatic conditions. Fifty-two percent of this week samples came from Zone NC, 22% came from Zone C, 16% came from Zone NE, and 9% came from Zone SW.

As of the third week, SWH had higher test weight, the same dockage, similar grading factors, lower moisture, lower protein, slightly higher falling number, slightly heavier thousand kernel weight, and slightly larger kernel size when compared to last year.



BY USDA ECONOMIC STATISTICS DISTRICTS

Table 1

2017 CROP WEEK 3, August 10, 2017																				
			Grading Data									Quality Data								
Class	District	Number of Samples	Test Weight (lb/bu)	Test Weight (kg/hl)	Dockage (%)	Heat Damage (%)	Total Damage (%)	Foreign Material (%)	Shrunk & Broken (%)	Total Defects (%)	Moisture (%)	Protein (% 12% mb)			Falling Number (s, 14%mb)	Thousand Kernel Weight (g, 14% mb)	Kernel Hardness (>20 to 120)	Kernel Size (mm)	Ash (% 14% mb)	Wet Gluten (% 14% mb)
												Average	Low	High						
SWH	1/2	11	60.5	79.6	0.4	0.0	0.0	0.1	0.6	0.7	10.2	8.6	7.8	9.4	358	38.2	31.7	2.81	1.26	17.6
SWH	4	84	60.3	79.4	0.6	0.0	0.0	0.0	0.5	0.5	9.0	9.9	7.3	15.1	315	34.7	31.5	2.75	1.29	21.8
SWH	5	21	61.0	80.2	0.4	0.0	0.0	0.3	0.5	0.9	8.3	9.1	7.1	13.3	315	36.8	35.2	2.79	1.31	16.2
SWH	6/7	8	61.8	81.2	0.3	0.0	0.0	0.0	0.4	0.4	9.0	9.6	8.0	11.5	326	36.7	26.5	2.72	1.31	19.1
SWH	8	20	61.6	81.0	0.4	0.0	0.0	0.0	0.7	0.7	8.7	9.5	7.6	11.4	345	35.1	33.0	2.66	1.19	19.0
SWH	10	24	62.6	82.2	0.4	0.0	0.0	0.1	0.4	0.6	8.7	9.4	7.9	10.9	334	38.6	32.0	2.82	1.21	19.9
SWH	11	9	63.4	83.3	0.2	0.0	0.0	0.0	0.4	0.4	8.6	10.1	8.5	11.4	364	39.8	33.1	2.90	1.45	23.1
SWH	12	10	60.9	80.2	0.8	0.0	0.0	0.0	0.2	0.2	10.0	8.9	8.0	10.4	326	46.3	25.8	3.03	1.51	17.2
SWH	13	12	61.5	80.9	0.3	0.0	0.0	0.0	0.5	0.5	9.3	9.6	7.9	11.2	314	40.7	27.9	2.90	1.45	19.1
	Crop Year Average																			
SWH	2017	199	61.1	80.4	0.5	0.0	0.0	0.1	0.5	0.6	9.0	9.6			326	36.9	31.5	2.79	1.30	20.0
SWH	2016	402	60.8	80.0	0.6	0.0	0.1	0.0	0.6	0.6	9.8	10.1			314	36.3	31.1	2.75	1.28	22.1
WHCB	4	2	63.6	83.5	0.3	0.0	0.0	0.0	0.4	0.4	8.3	10.2	9.9	10.4	357	31.0	44.2	2.72	1.18	21.2
WHCB	6/7	1	57.8	76.1	0.9	0.0	0.0	0.5	1.5	2.0	8.1	9.5	9.5	9.5	339	31.9	29.7	2.53	1.37	19.2
WHCB	8	23	60.5	79.5	0.6	0.0	0.0	0.0	1.0	1.0	8.5	10.0	7.3	13.2	333	34.8	32.9	2.57	1.21	19.6
WHCB	10	4	61.4	80.8	0.8	0.0	0.0	0.0	1.5	1.5	9.0	9.5	8.0	10.8	417	32.6	37.6	2.63	1.24	16.2
	Crop Year Average																			
WHCB	2017	30	60.7	79.8	0.6	0.0	0.0	0.0	1.0	1.1	8.5	9.9			346	34.2	34.2	2.59	1.22	19.3
WHCB	2016	66	60.8	79.9	0.8	0.0	0.0	0.0	0.8	0.9	9.6	9.9			301	33.7	34.5	2.57	1.18	19.4
HRW	4	8	61.4	80.7	0.3	0.0	0.2	0.0	0.9	1.1	8.1	12.1	10.7	14.3	378	34.4	72.1	2.82	1.30	27.1
HRW	5	8	61.5	80.9	0.4	0.0	0.0	0.0	0.4	0.4	8.9	13.2	11.4	14.4	387	36.7	71.0	2.90	1.50	28.4
HRW	6/7	7	62.3	81.9	0.5	0.0	0.0	0.0	0.5	0.5	8.7	11.9	11.1	14.0	410	34.0	72.6	2.75	1.27	26.9
HRW	8	12	63.2	83.1	0.4	0.0	0.0	0.0	0.5	0.5	8.8	12.1	10.9	12.9	403	36.5	65.1	2.82	1.34	27.1
HRW	10	7	62.6	82.4	0.4	0.0	0.0	0.0	0.6	0.6	8.5	11.7	10.9	12.9	405	35.8	73.1	2.75	1.29	23.3
HRW	11	4	62.0	81.5	0.4	0.0	0.0	0.0	0.5	0.5	8.3	11.2	10.5	12.1	425	33.0	80.7	2.67	1.50	24.7
	Crop Year Average																			
HRW	2017	46	62.3	81.9	0.4	0.0	0.0	0.0	0.6	0.6	8.6	12.1			399	35.4	71.1	2.80	1.36	26.5
HRW	2016	69	61.8	81.3	0.6	0.0	0.0	0.0	0.7	0.7	9.1	11.4			366	34.5	68.8	2.78	1.38	24.1
HRS	4	2	61.9	81.3	0.2	0.0	0.9	0.0	0.5	1.3	8.9	14.3	14.2	14.3	387	32.0	75.6	2.86	1.62	37.8
HRS	6/7	3	64.3	84.5	0.3	0.0	0.0	0.0	0.1	0.1	9.6	15.5	15.0	15.8	383	40.6	56.1	3.07	1.48	36.0
HRS	8	2	64.8	85.1	0.2	0.0	0.0	0.0	0.1	0.1	9.1	17.0	16.7	17.2	387	41.0	57.8	3.08	1.52	44.7
HRS	10	1	63.2	83.1	0.9	0.0	0.0	0.0	5.7	5.7	7.8	13.3	13.3	13.3	487	25.7	81.9	2.55	1.62	30.4
	Crop Year Average																			
HRS	2017	8	63.7	83.7	0.3	0.0	0.2	0.0	0.9	1.1	9.1	15.3			398	36.7	64.6	2.95	1.54	37.9
HRS	2016	61	62.3	81.9	0.5	0.0	0.0	0.0	0.7	0.8	9.0	14.1			369	32.7	74.5	2.76	1.46	32.7



BY PRODUCTION ZONES

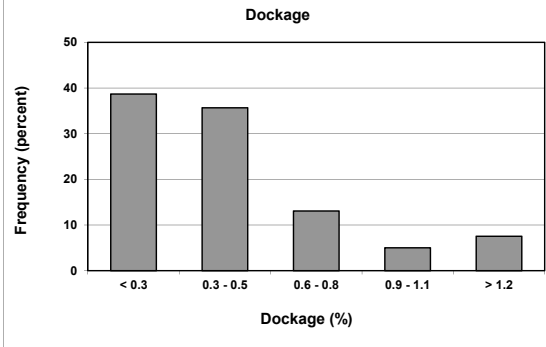
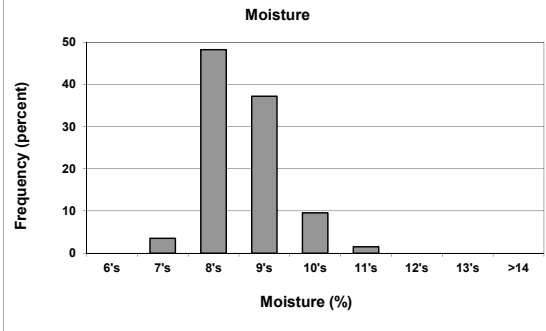
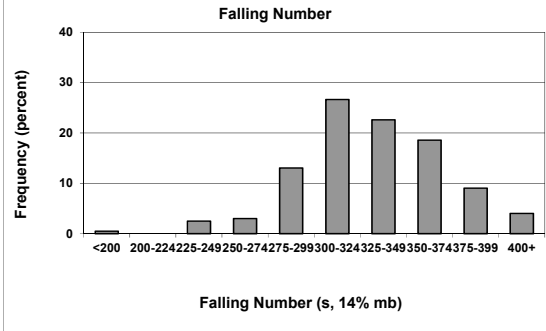
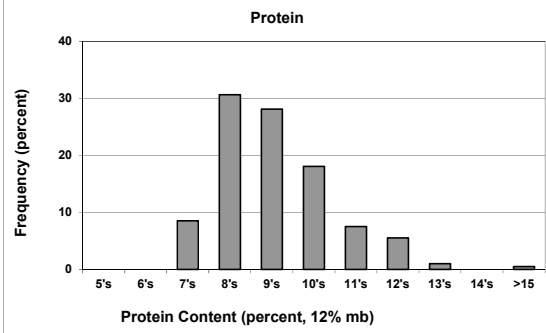
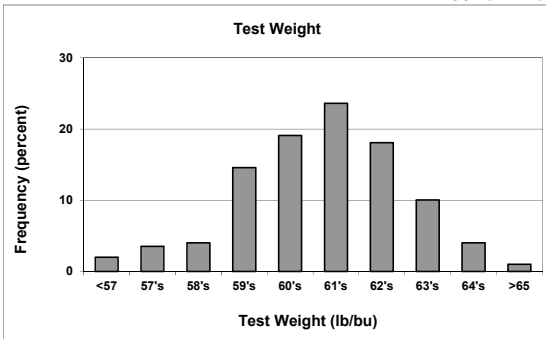
Table 2

2017 CROP WEEK 3, August 10, 2017																				
Class	District	Number of Samples	Grading Data								Quality Data									
			Test Weight (lb/bu)	Test Weight (kg/ht)	Dockage (%)	Heat Damage (%)	Total Damage (%)	Foreign Material (%)	Shrunk & Broken (%)	Total Defects (%)	Moisture (%)	Protein (% 12% mb)			Falling Number (s, 14%mb)	Thousand Kernel Weight (g, 14% mb)	Kernel Hardness (-20 to 120)	Kernel Size (mm)	Ash (% 14% mb)	Wet Gluten (% 14% mb)
												Average	Low	High						
SWH	NC	33	61.8	81.2	0.3	0.0	0.0	0.0	0.6	0.6	8.7	9.5	7.6	11.5	338	36.2	31.0	2.70	1.21	19.0
SWH	NE	18	63.1	83.0	0.3	0.0	0.0	0.0	0.3	0.3	8.7	9.6	7.9	11.4	360	38.9	33.0	2.86	1.35	21.3
SWH	C	115	60.6	79.7	0.5	0.0	0.0	0.1	0.5	0.6	8.9	9.7	7.1	15.1	316	35.4	32.2	2.76	1.29	20.7
SWH	SW	11	60.5	79.6	0.4	0.0	0.0	0.1	0.6	0.7	10.2	8.6	7.8	9.4	358	38.2	31.7	2.81	1.26	17.6
SWH	SE	22	61.2	80.5	0.5	0.0	0.0	0.0	0.3	0.4	9.6	9.3	7.9	11.2	319	43.2	27.0	2.96	1.77	18.2
	Crop Year Average																			
SWH	2017	199	61.1	80.4	0.5	0.0	0.0	0.1	0.5	0.6	9.0	9.6			326	36.9	31.5	2.79	1.30	20.0
SWH	2016	402	60.8	80.0	0.6	0.0	0.1	0.0	0.6	0.6	9.8	10.1			314	36.3	31.1	2.75	1.28	22.1
WHCB	NC	26	60.4	79.5	0.7	0.0	0.0	0.1	1.1	1.1	8.4	10.0	7.3	13.2	340	34.4	34.0	2.57	1.22	19.4
WHCB	NE	2	61.6	80.9	0.5	0.0	0.0	0.1	0.9	0.9	10.3	8.7	8.0	9.4	388	35.1	26.8	2.70	1.16	16.4
WHCB	C	2	63.6	83.5	0.3	0.0	0.0	0.0	0.4	0.4	8.3	10.2	9.9	10.4	357	31.0	44.2	2.72	1.18	21.2
	Crop Year Average																			
WHCB	2017	30	60.7	79.8	0.6	0.0	0.0	0.0	1.0	1.1	8.5	9.9			346	34.2	34.2	2.59	1.22	19.3
WHCB	2016	66	60.8	79.9	0.8	0.0	0.0	0.0	0.8	0.9	9.6	9.9			301	33.7	34.5	2.57	1.18	19.4
HRW	NC	19	62.9	82.7	0.4	0.0	0.0	0.0	0.6	0.6	8.9	12.1	10.9	14.0	402	35.7	67.5	2.80	1.34	26.7
HRW	NE	7	62.2	81.7	0.5	0.0	0.0	0.0	0.5	0.5	8.3	11.3	10.5	12.1	432	33.5	77.5	2.67	1.42	23.3
HRW	C	20	61.7	81.1	0.4	0.0	0.1	0.0	0.6	0.7	8.5	12.4	10.7	14.4	386	35.7	72.2	2.84	1.35	27.5
	Crop Year Average																			
HRW	2017	46	62.3	81.9	0.4	0.0	0.0	0.0	0.6	0.6	8.6	12.1			399	35.4	71.1	2.80	1.36	26.5
HRW	2016	69	61.8	81.3	0.6	0.0	0.0	0.0	0.7	0.7	9.1	11.4			366	34.5	68.8	2.78	1.38	24.1
HRS	NC	8	62.9	82.7	0.2	0.0	0.0	0.0	0.2	0.2	9.4	15.1	12.4	17.2	374	39.8	62.2	3.00	1.51	39.8
HRS	NE	3	59.5	78.3	1.8	0.0	0.0	0.1	3.5	3.6	8.3	14.9	13.1	16.3	452	30.5	75.8	2.65	1.57	34.8
HRS	C	5	62.9	82.6	0.3	0.0	0.3	0.0	1.4	1.7	8.5	14.7	13.3	15.8	408	33.7	73.8	2.85	1.55	34.2
	Crop Year Average																			
HRS	2017	8	63.7	83.7	0.3	0.0	0.2	0.0	0.9	1.1	9.1	15.3			398	36.7	64.6	2.95	1.54	37.9
HRS	2016	61	62.3	81.9	0.5	0.0	0.0	0.0	0.7	0.8	9.0	14.1			369	32.7	74.5	2.76	1.46	32.7

Distributions

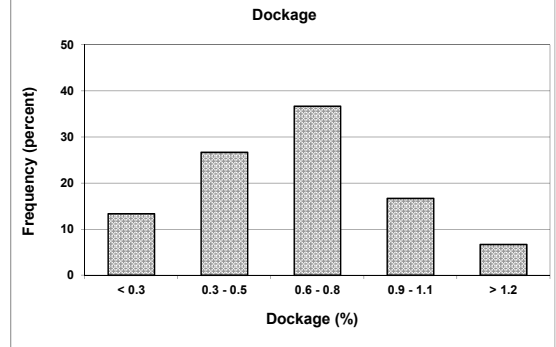
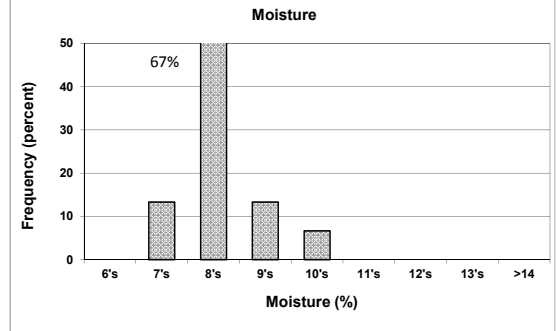
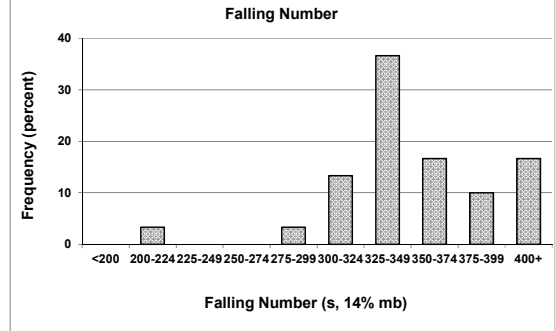
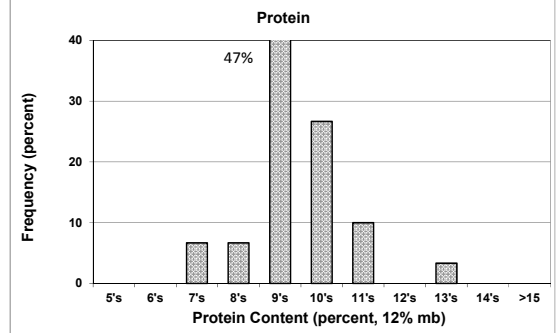
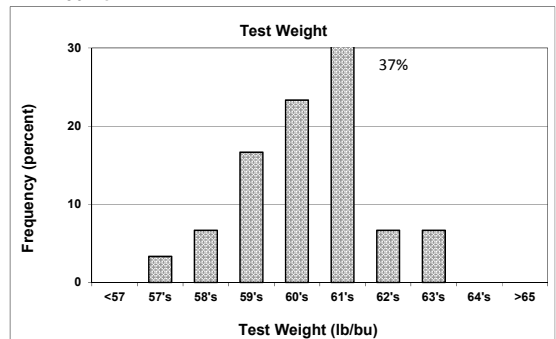
SOFT WHITE WHEAT

199 SAMPLES



WHITE CLUB WHEAT

30 SAMPLE



Prepared by: Wheat Marketing Center, Portland, Oregon