



## **2017 PACIFIC NORTHWEST CROP QUALITY REPORT**

WEEK 2: August 3, 2017

By the end of the second week reporting period for the 2017 Pacific Northwest wheat harvest, we received a total of 169 samples.

Of the 126 wheat samples we received in the second week, 92 were soft white (SWH), 4 were white club (WHCB), 22 were hard red winter (HRW), and 8 were hard red spring (HRS). Fifty-four samples (43%) came from District 4 (North Central Oregon), 18 (14%) came from District 5 (Northeastern Oregon), 12 (10%) each came from Districts 6/7 (Western Washington) and District 13 (South Central Idaho), 11 (9%) came from District 8 (East Central Washington), 10 (8%) came from District 12 (Southwestern Idaho), and 9 (7%) came from District 10 (Southeastern Washington).

USDA Economic Statistics Districts (Table 1) showed the following: Test weights for SWH ranged from 60.3 to 62.6 lb/bu (79.3 to 82.3 kg/hl). Dockage ranged from 0.2 to 0.8%. Wheat moisture content ranged from 8.2 to 10.0%. Average SWH wheat protein content (12% mb) decreased to 9.6% this week from 10.1% last week. SWH falling number average value (14% mb) was 317 seconds. Thousand kernel weight (14% mb) and kernel size indicated heavier and larger kernels than last year averages, respectively. With limited number of samples, average WHCB test weight was higher at 61.5 lb/bu compared with 60.8 lb/bu last year. Average moisture content was lower so far this year at 8.7% compared with 9.6% last year. Average WHCB wheat protein (12% mb) was higher at 10.2% than last year at 9.9%. WHCB falling number value was sound at 308 seconds. With limited number of HRW and HRS samples, averages indicated higher test weights, similar kernel moistures, higher protein contents, higher falling number values, and larger and similar to heavier kernels, when compared to last year.

We will continue to report the six PNW Production Zones (Table 2): Northwest (NW), Southwest (SW), North Central (NC), Central (C), Northeast (NE), and Southeast (SE). The Zones are based on country elevator locations and climatic conditions. This week samples came from Zones C (65%), NC (17%), and SE (17%).

Although the average SWH protein (12% mb) was 9.6% at the end of second week, it is still too early to determine this year's average protein.



**BY USDA ECONOMIC STATISTICS DISTRICTS**

**Table 1**

2017 CROP WEEK 2, August 3, 2017

			Grading Data									Quality Data								
Class	District	Number of Samples	Test Weight (lb/bu)	Test Weight (kg/hl)	Dockage (%)	Heat Damage (%)	Total Damage (%)	Foreign Material (%)	Shrunk & Broken (%)	Total Defects (%)	Moisture (%)	Protein (% 12% mb)			Falling Number (s, 14%mb)	Thousand Kernel Weight (g, 14% mb)	Kernel Hardness (20 to 120)	Kernel Size (mm)	Ash (% 14% mb)	Wet Gluten (% 14% mb)
												Average	Low	High						
SWH	4	73	60.3	79.3	0.6	0.0	0.0	0.0	0.5	0.6	9.1	9.8	7.3	13.1	312	34.5	31.3	2.75	1.29	21.6
SWH	5	15	60.5	79.6	0.4	0.0	0.0	0.5	0.6	1.1	8.2	9.1	7.1	13.3	310	35.5	34.8	2.76	1.36	15.9
SWH	6/7	4	62.6	82.3	0.2	0.0	0.0	0.0	0.3	0.3	8.9	9.4	8.7	10.2	333	36.5	30.6	2.71	1.30	18.7
SWH	10	7	62.6	82.3	0.3	0.0	0.0	0.0	0.4	0.5	8.6	9.5	8.5	10.8	322	38.1	28.9	2.81	1.17	21.9
SWH	11	8	63.5	83.5	0.2	0.0	0.0	0.0	0.4	0.4	8.6	10.0	8.5	11.4	365	39.6	33.6	2.91	1.45	24.3
SWH	12	10	60.9	80.2	0.8	0.0	0.0	0.0	0.2	0.2	10.0	8.9	8.0	10.4	326	46.3	25.8	3.03	1.51	17.2
SWH	13	12	61.5	80.9	0.3	0.0	0.0	0.0	0.5	0.5	9.3	9.6	7.9	11.2	314	40.7	27.9	2.90	1.45	19.1
	<b>Crop Year Average</b>																			
SWH	<b>2017</b>	129	60.9	80.1	0.5	0.0	0.0	0.1	0.5	0.6	9.0	9.6			317	36.7	31.0	2.80	1.33	20.5
SWH	<b>2016</b>	402	60.8	80.0	0.6	0.0	0.1	0.0	0.6	0.6	9.8	10.1			314	36.3	31.1	2.75	1.28	22.1
WHCB	4	2	63.6	83.5	0.3	0.0	0.0	0.0	0.4	0.4	8.3	10.2	9.9	10.4	357	31.0	44.2	2.72	1.18	21.2
WHCB	8	2	59.5	78.3	1.1	0.0	0.0	0.0	1.6	1.6	9.2	10.3	9.6	10.9	259	31.0	29.2	2.44	1.15	21.3
	<b>Crop Year Average</b>																			
WHCB	<b>2017</b>	4	61.5	80.9	0.7	0.0	0.0	0.0	1.0	1.0	8.7	10.2			308	31.0	36.7	2.58	1.17	21.3
WHCB	<b>2016</b>	66	60.8	79.9	0.8	0.0	0.0	0.0	0.8	0.9	9.6	9.9			301	33.7	34.5	2.57	1.18	19.4
HRW	4	6	61.2	80.5	0.4	0.0	0.2	0.0	1.1	1.3	8.1	12.4	10.7	14.3	388	32.5	73.1	2.77	1.37	27.6
HRW	5	7	61.5	80.9	0.5	0.0	0.0	0.0	0.4	0.4	8.9	13.2	11.4	14.4	392	36.2	70.6	2.89	1.49	28.4
HRW	6/7	5	61.9	81.4	0.6	0.0	0.0	0.0	0.6	0.6	8.7	12.1	11.3	14.0	412	32.6	73.4	2.73	1.34	29.2
HRW	8	7	63.2	83.1	0.4	0.0	0.0	0.0	0.6	0.6	8.9	12.1	11.2	12.6	391	34.5	70.6	2.80	1.34	27.7
HRW	10	1	62.0	81.5	0.2	0.0	0.0	0.0	0.5	0.5	8.3	11.1	11.1	11.1	345	39.9	79.6	2.78	1.22	25.0
HRW	11	2	63.1	82.9	0.2	0.0	0.0	0.0	0.5	0.5	8.5	10.9	10.5	11.3	443	32.5	76.5	2.80	1.46	22.5
	<b>Crop Year Average</b>																			
HRW	<b>2017</b>	28	62.1	81.6	0.4	0.0	0.1	0.0	0.6	0.7	8.6	12.3			396	34.2	72.4	2.80	1.39	27.7
HRW	<b>2016</b>	69	61.8	81.3	0.6	0.0	0.0	0.0	0.7	0.7	9.1	11.4			366	34.5	68.8	2.78	1.38	24.1
HRS	4	2	61.9	81.3	0.2	0.0	0.9	0.0	0.5	1.3	8.9	14.3	14.2	14.3	387	32.0	75.6	2.86	1.62	37.8
HRS	6/7	3	64.3	84.5	0.3	0.0	0.0	0.0	0.1	0.1	9.6	15.5	15.0	15.8	383	40.6	56.1	3.07	1.48	36.0
HRS	8	2	59.3	78.0	0.2	0.0	0.0	0.0	0.1	0.1	9.1	17.0	16.7	17.2	387	41.0	57.8	3.08	1.52	44.7
HRS	10	1	63.2	83.1	0.9	0.0	0.0	0.0	5.7	5.7	7.8	13.3	13.3	13.3	487	25.7	81.9	2.55	1.62	30.4
	<b>Crop Year Average</b>																			
HRS	<b>2017</b>	8	63.7	83.7	0.3	0.0	0.2	0.0	0.9	1.1	9.1	15.3			398	36.7	64.6	2.95	1.54	37.9
HRS	<b>2016</b>	61	62.3	81.9	0.5	0.0	0.0	0.0	0.7	0.8	9.0	14.1			369	32.7	74.5	2.76	1.46	32.7



**BY PRODUCTION ZONES**

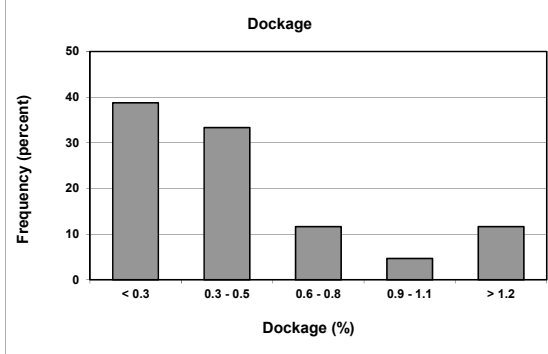
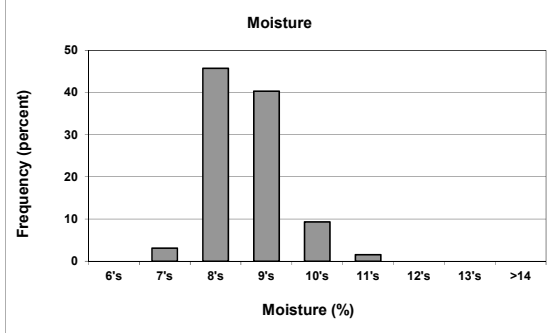
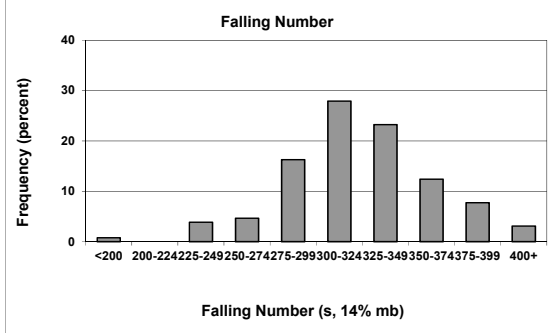
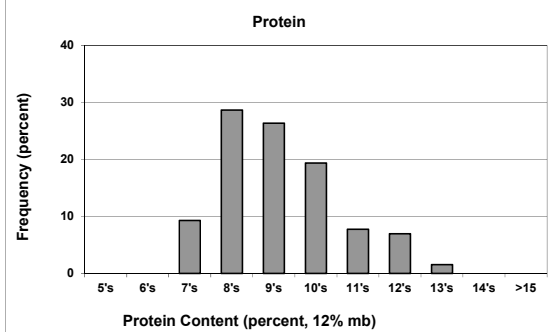
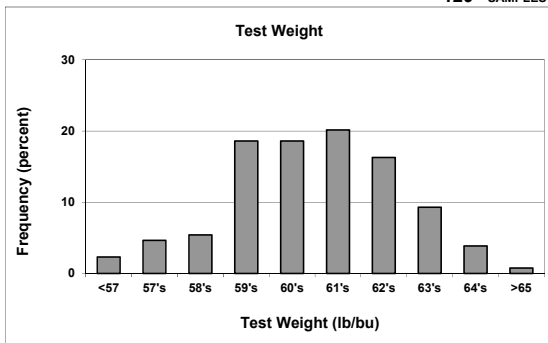
**Table 2**

2017 CROP WEEK 2, August 3, 2017																				
Class	District	Number of Samples	Grading Data									Quality Data								
			Test Weight (lb/bu)	Test Weight (kg/ht)	Dockage (%)	Heat Damage (%)	Total Damage (%)	Foreign Material (%)	Shrunk & Broken (%)	Total Defects (%)	Moisture (%)	Protein (% 12% mb)			Falling Number (s, 14%mb)	Thousand Kernel Weight (g, 14% mb)	Kernel Hardness (-20 to 120)	Kernel Size (mm)	Ash (% 14% mb)	Wet Gluten (% 14% mb)
												Average	Low	High						
SWH	NC	5	62.5	82.1	0.3	0.0	0.0	0.0	0.3	0.3	8.7	9.3	8.7	10.2	329	36.6	28.7	2.73	1.25	19.0
SWH	NE	8	63.5	83.5	0.2	0.0	0.0	0.0	0.4	0.4	8.6	10.0	8.5	11.4	365	39.6	33.6	2.91	1.45	24.3
SWH	C	94	60.5	79.6	0.5	0.0	0.0	0.1	0.5	0.6	8.9	9.7	7.1	13.3	312	34.9	31.8	2.76	1.29	22.7
SWH	SE	22	61.2	80.5	0.5	0.0	0.0	0.0	0.3	0.4	9.6	9.3	7.9	11.2	319	43.2	27.0	2.96	1.77	18.2
	<b>Crop Year Average</b>																			
SWH	<b>2017</b>	129	60.9	80.1	0.5	0.0	0.0	0.1	0.5	0.6	9.0	9.6			317	36.7	31.0	2.80	1.33	20.5
SWH	<b>2016</b>	402	60.8	80.0	0.6	0.0	0.1	0.0	0.6	0.6	9.8	10.1			314	36.3	31.1	2.75	1.28	22.1
WHCB	NC	2	59.5	78.3	1.1	0.0	0.0	0.0	1.6	1.6	9.2	10.3	9.6	10.9	259	31.0	29.2	2.44	1.15	21.3
WHCB	C	2	63.6	83.5	0.3	0.0	0.0	0.0	0.4	0.4	8.3	10.2	9.9	10.4	357	31.0	44.2	2.72	1.18	21.2
	<b>Crop Year Average</b>																			
WHCB	<b>2017</b>	4	61.5	80.9	0.7	0.0	0.0	0.0	1.0	1.0	8.7	10.2			308	31.0	36.7	2.58	1.17	21.3
WHCB	<b>2016</b>	66	60.8	79.9	0.8	0.0	0.0	0.0	0.8	0.9	9.6	9.9			301	33.7	34.5	2.57	1.18	19.4
HRW	NC	11	62.7	82.5	0.5	0.0	0.0	0.0	0.6	0.6	8.9	12.1	11.2	14.0	395	33.9	71.2	2.78	1.36	27.4
HRW	NE	2	63.1	82.9	0.2	0.0	0.0	0.0	0.5	0.5	8.5	10.9	10.5	11.3	443	32.5	76.5	2.80	1.46	22.5
HRW	C	15	61.5	80.8	0.4	0.0	0.1	0.0	0.7	0.8	8.5	12.7	10.7	14.4	390	34.7	72.7	2.82	1.40	28.5
	<b>Crop Year Average</b>																			
HRW	<b>2017</b>	28	62.1	81.6	0.4	0.0	0.1	0.0	0.6	0.7	8.6	12.3			396	34.2	72.4	2.80	1.39	27.7
HRW	<b>2016</b>	69	61.8	81.3	0.6	0.0	0.0	0.0	0.7	0.7	9.1	11.4			366	34.5	68.8	2.78	1.38	24.1
HRS	NC	4	61.5	80.9	0.3	0.0	0.0	0.0	0.1	0.1	9.5	16.1	15.0	17.2	378	40.5	55.5	3.07	1.52	43.9
HRS	C	4	63.0	82.8	0.3	0.0	0.4	0.0	1.7	2.1	8.6	14.4	13.3	15.8	414	32.9	73.8	2.83	1.57	31.9
	<b>Crop Year Average</b>																			
HRS	<b>2017</b>	8	63.7	83.7	0.3	0.0	0.2	0.0	0.9	1.1	9.1	15.3			398	36.7	64.6	2.95	1.54	37.9
HRS	<b>2016</b>	61	62.3	81.9	0.5	0.0	0.0	0.0	0.7	0.8	9.0	14.1			369	32.7	74.5	2.76	1.46	32.7

# Distributions

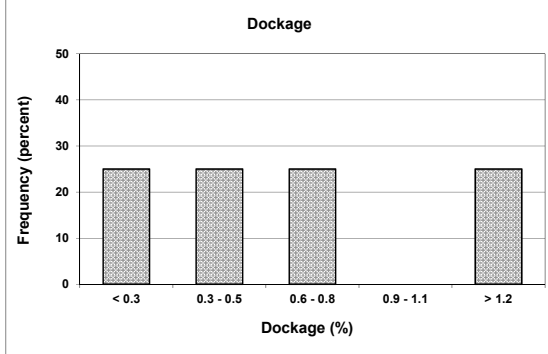
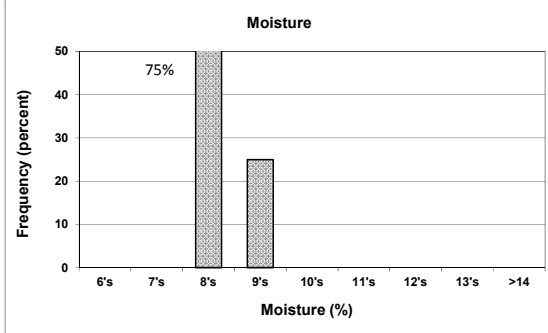
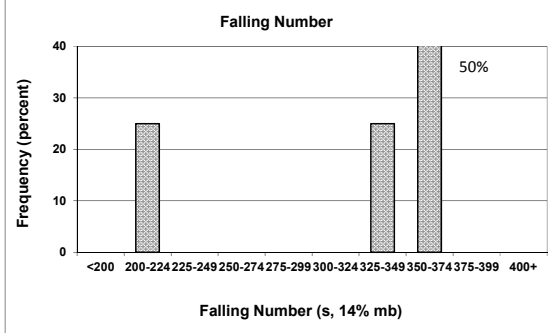
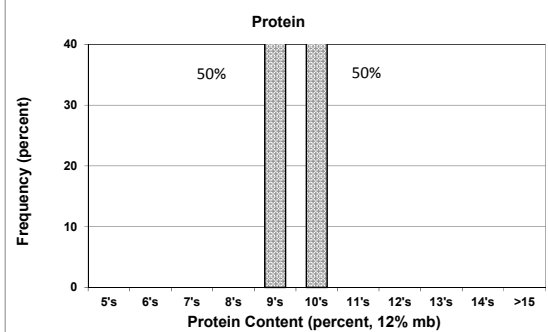
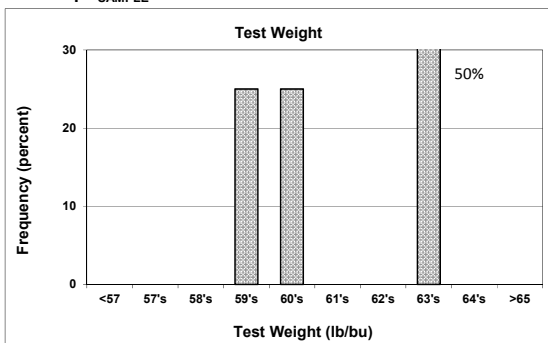
## SOFT WHITE WHEAT

129 SAMPLES



## WHITE CLUB WHEAT

4 SAMPLE



Prepared by: Wheat Marketing Center, Portland, Oregon